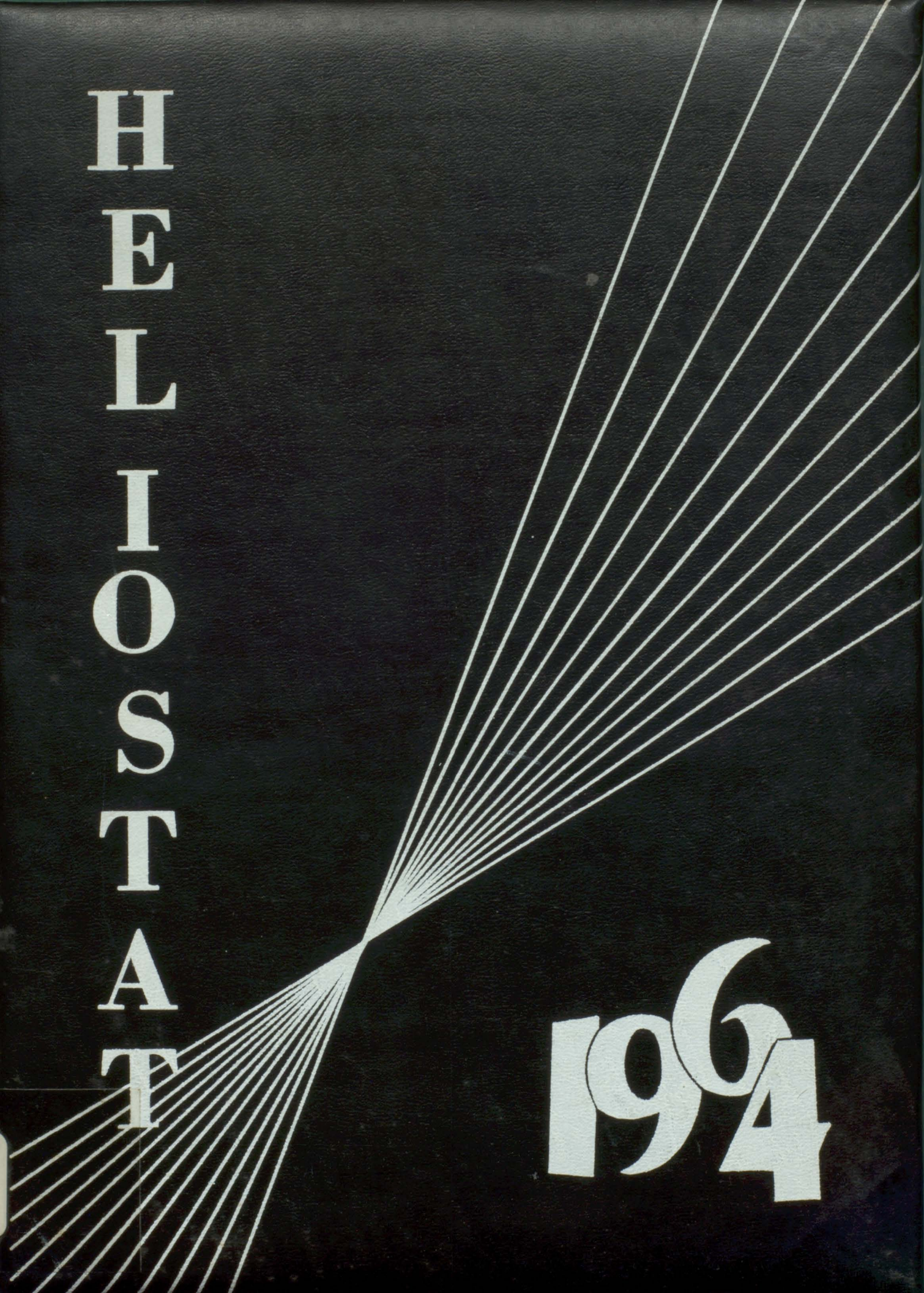
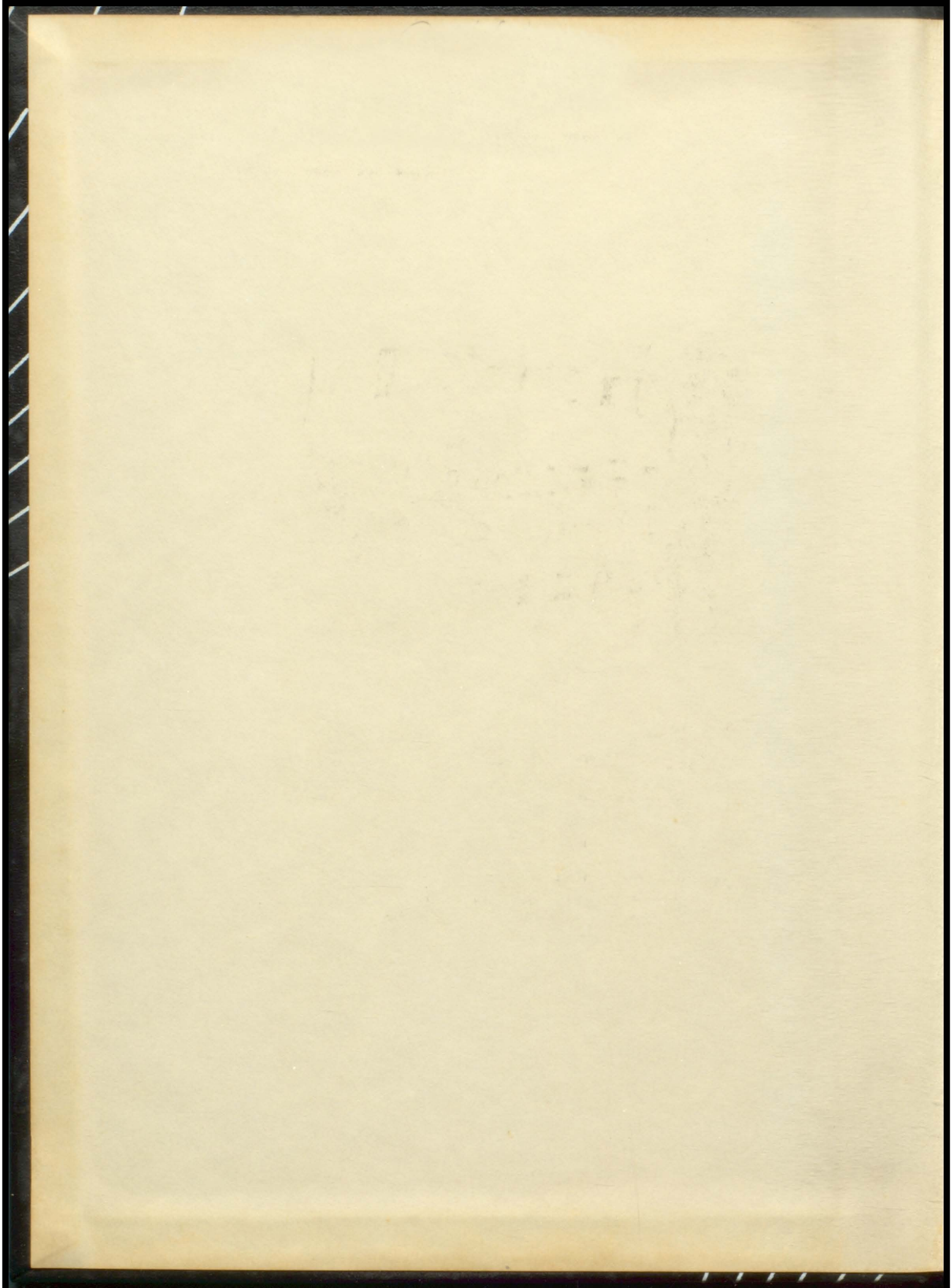
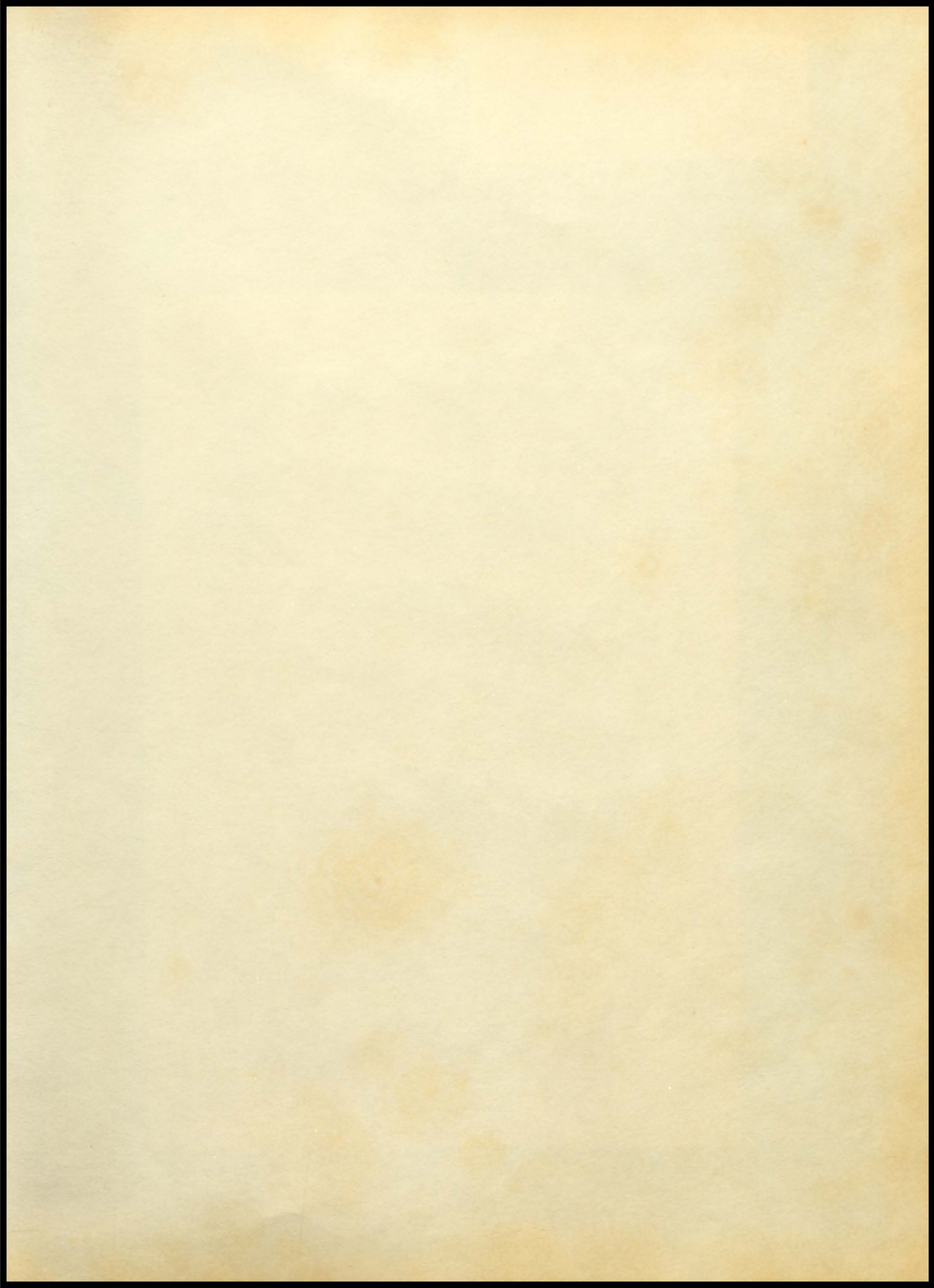


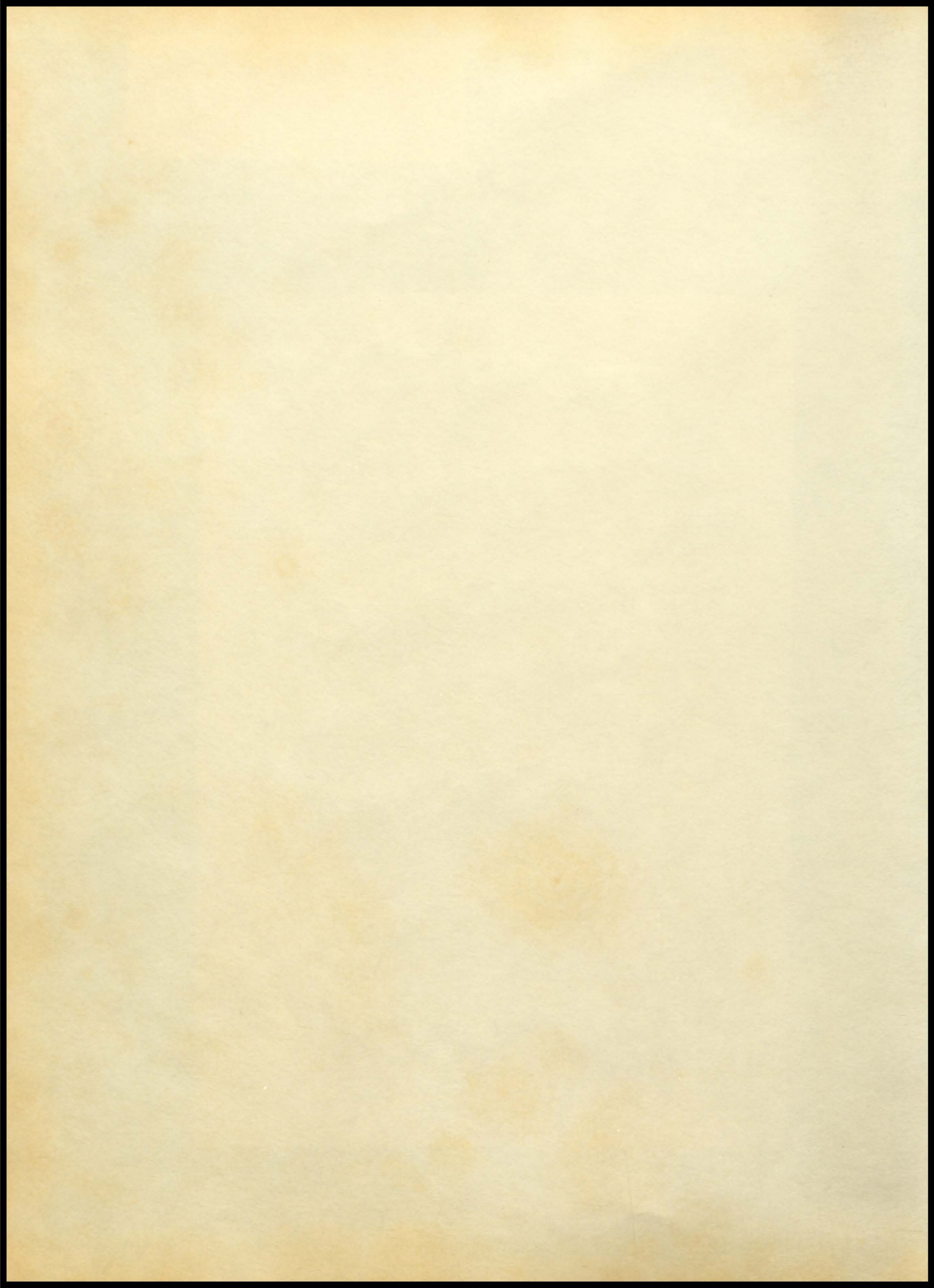
**H  
E  
L  
L  
I  
O  
S  
T  
A  
T**

**1966**











PAUL HICKEN, Designer of the cover of the 1964 Heliostat.

CENTRALIA HIGH SCHOOL

Centralia, Missouri

Vickie Brooks, Editor

# HELIOSTAT

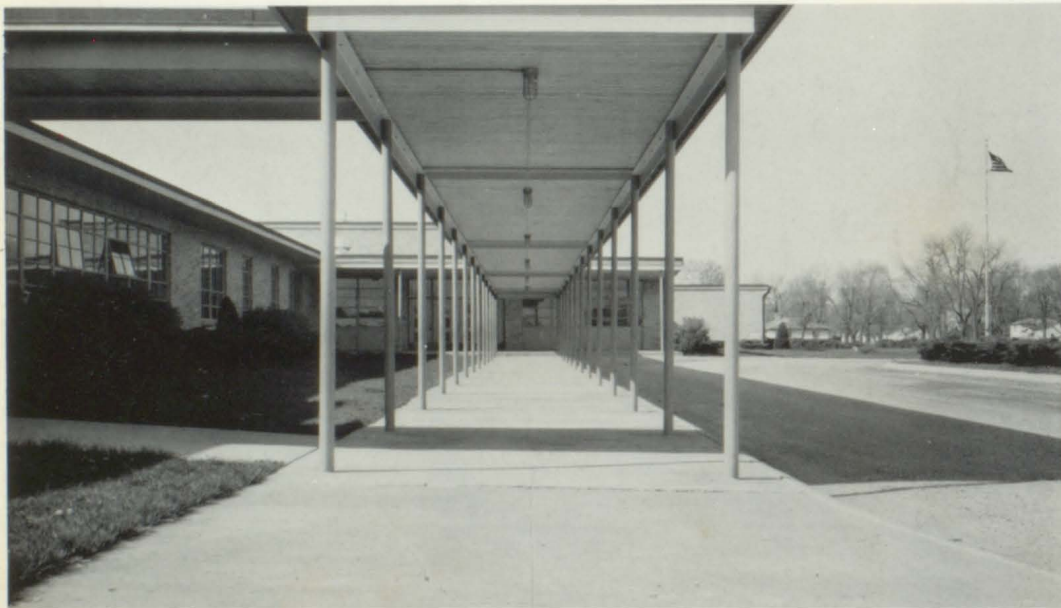
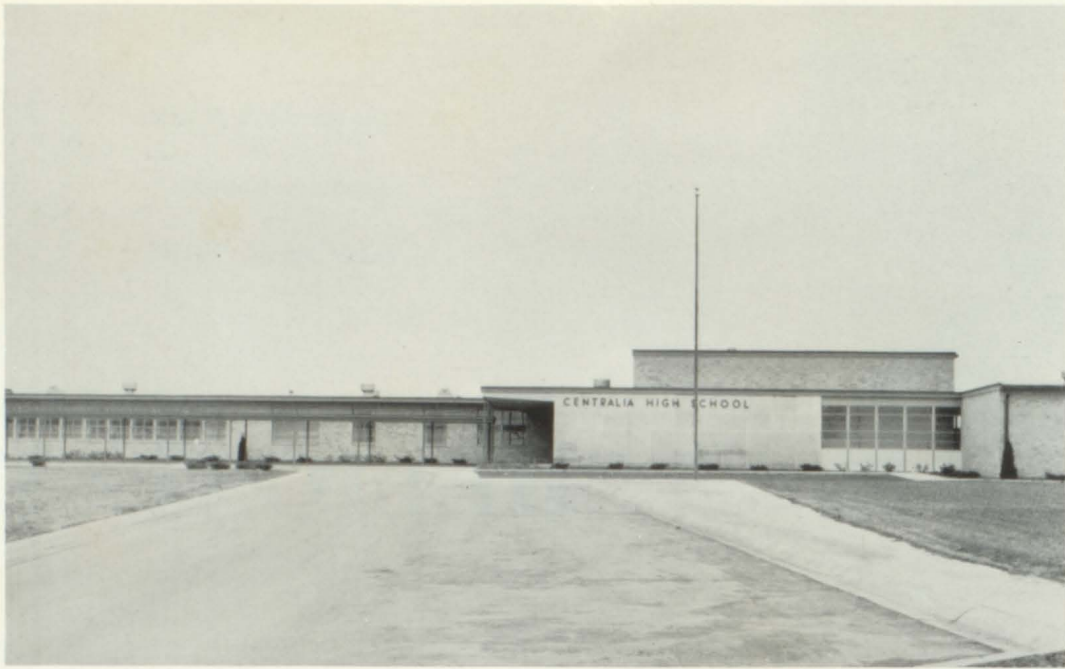


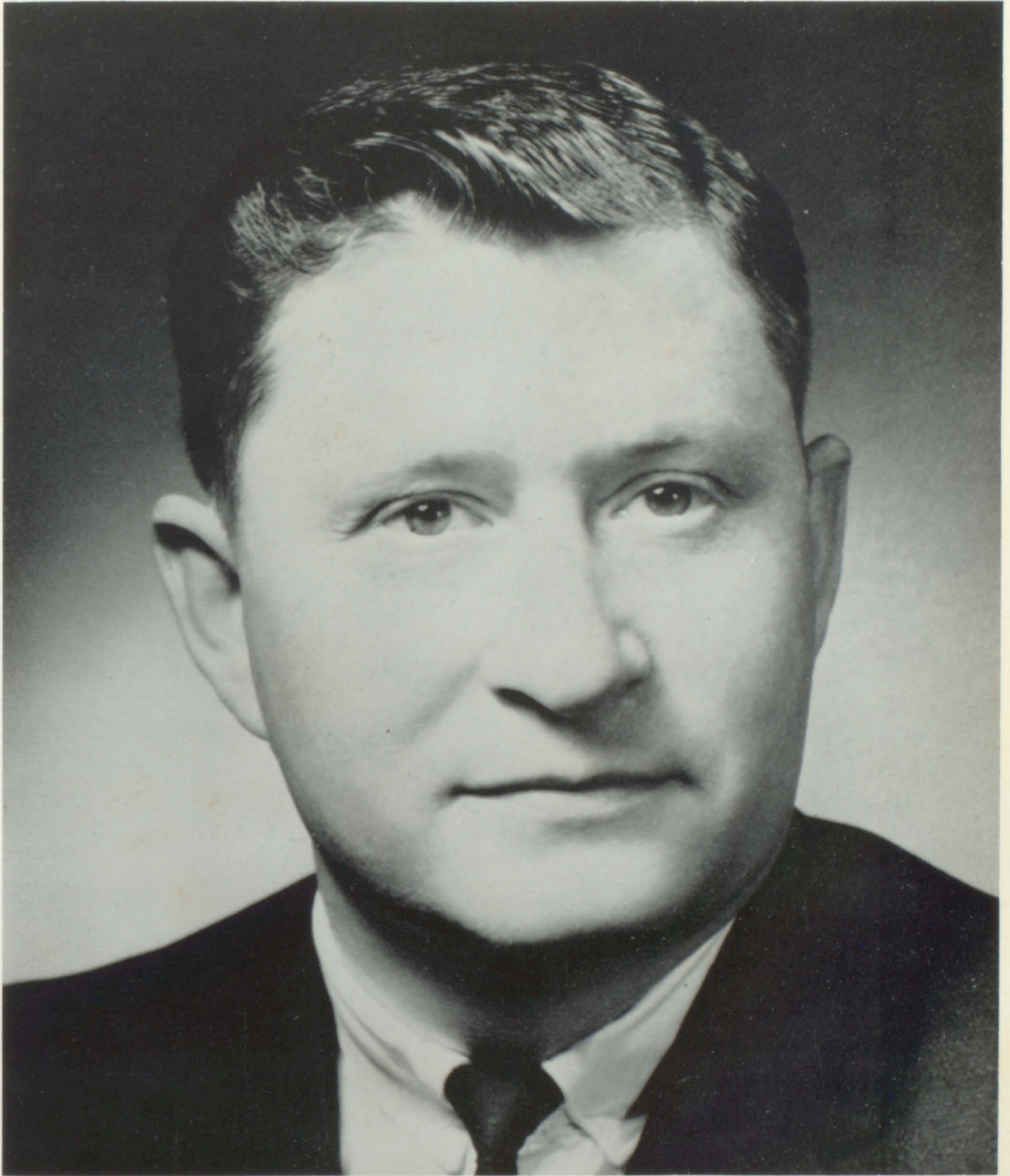
Mike Fry and Virginia Bruce stand beside the 1964 Centralia High School Flag purchased by the Student Council this year. Mike is Student Council president and Virginia designed the flag.

## SCHOOL PLEDGE

We, as members of the Centralia High School student body, do pledge allegiance to the flag of Centralia High School. As Citizens of our school and our country, we will promote the ideals of true democracy. Achievement with harmony will be our everlasting goal. We will strive together to uphold our school's name, support its policies, and be true to our school always.

# OUR SCHOOL





It is to Mr. Chester Boren, Superintendent and friend, that the staff of the 1964 Heliostat dedicates this book. He has been behind us in every way - trying with an unfailing devotion to help create a spirit of student fellowship and to establish higher ideals. His pleasing personality and warm smile radiates encouragement to greater achievement. It is with this small token that we say "Thanks" to a wonderful man and a true friend.

**IN MEMORIAM TO MR. VIRGIL LEON SMITH  
PRINCIPAL OF C.H.S., 1962-63**



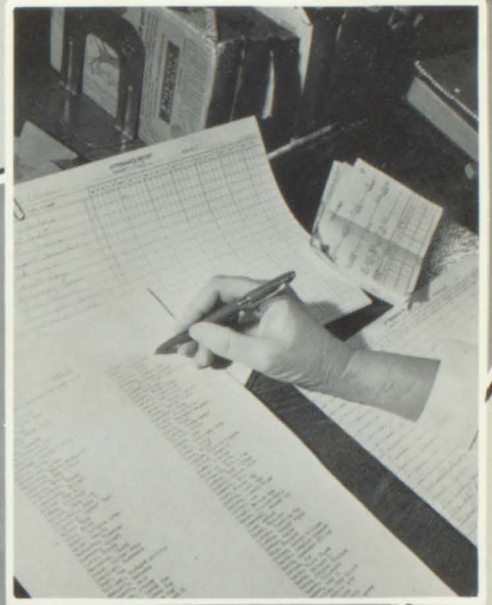
He lived!

A man who loved the simple things -  
His baby's smile, wife's tender touch,  
His daughter's kiss, son's rough embrace,  
A friend's handclasp, a student's praise.

He died!

A man who left fond memories  
Of love and faith and trust,  
Of work well done, of battles won;  
A life well lived, a race well run.

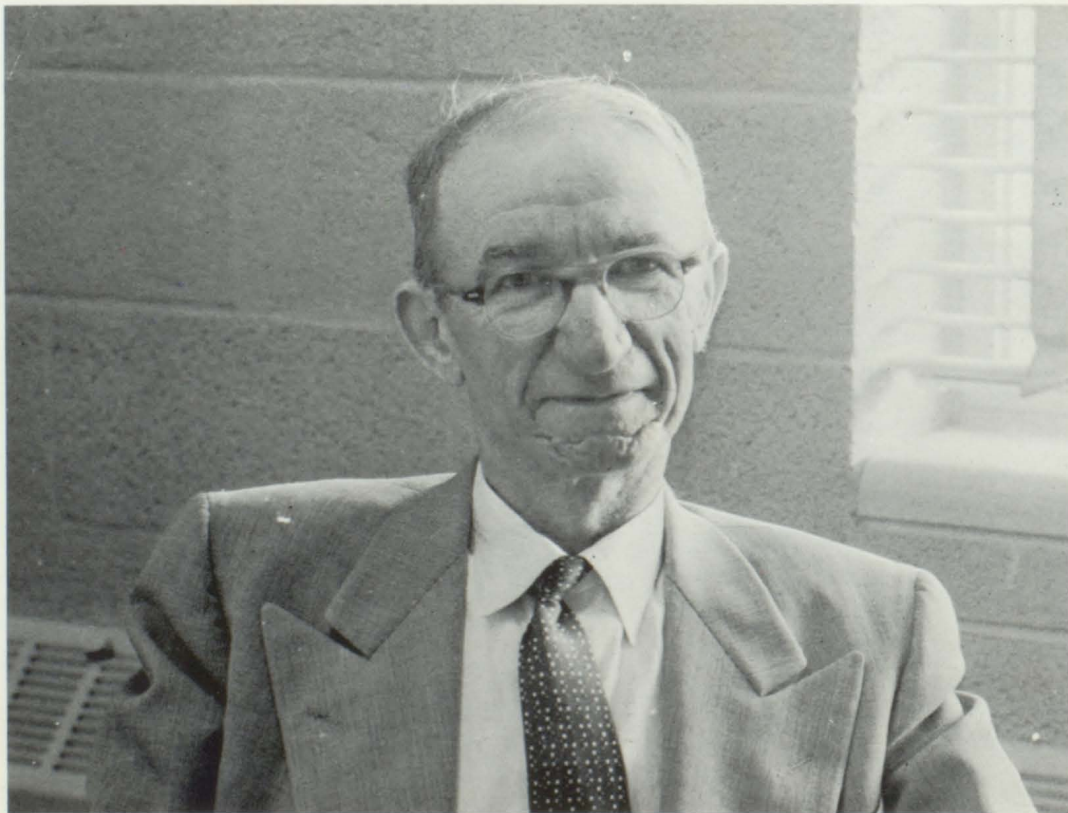




*FACULTY*



CHESTER BOREN, Superintendent



ARNOLD KERR, High School Counselor and Economics Teacher



MR. CLIFFORD HAYS, Principal  
M. A., University of Missouri  
B. S., Kirksville State Teachers College



SECRETARIES: Mrs. Norma Boyd and Mrs. Lois Grinstead



BAILEY, EUTOPIA  
M.A.  
University of Missouri  
English and Speech



BRUBAKER, JOHN L.  
M.A.  
Kirksville State  
Teachers College  
History and Drivers  
Education



BURK, WILLIAM LEE  
B.S.  
Kirksville State  
Teachers College,  
University of Missouri  
University of Alabama  
Montana State Univer-  
sity  
Chemistry, Physics,  
Biology, General  
Science



CARTER, KEN  
B.S.  
Kirksville State  
Teachers College  
Industrial Arts

CLARK, WAYNE  
B.S.  
University of Missouri  
Citizenship and  
History



CROW, SHIRLEY  
B.S.  
University of Missouri  
Art, and Annual  
Sponsor



CURTIS, MABEL  
B.S.  
University of Georgia  
Math and English





GROVE, NORMA  
A.A., Christian  
College  
B.S. Missouri  
University  
Home Economics



HOUSTON, VIRGINIA  
B.S., B.A.  
Maryville State  
Teachers College  
Business Education



JOHNS, MARTIN  
M.A., University of  
Missouri,  
Vocational Agriculture



JOYCE, ANNE,  
B.S.  
Central Methodist  
English and French

KERR, EDITH  
M.A.  
University of Texas  
Latin and Library

OLSON, FRANCES  
B.M.  
Christian College  
Piano

OLSON, V. J.  
B.S.  
Bethany College  
Kansas  
Math





MUSHOLT, WAYNE  
B.S., Kirksville  
State Teachers  
College

PERKINS, DICK  
B.S.  
Kirksville State  
Teachers College

SLOAN, RUSSELL  
M.A., University of  
Missouri  
B.S., University of  
Missouri

TRAIKOFF, KIRIL  
M.A., Kirksville  
State Teachers  
College  
B.A., Culver Stockton

THE SCHOOL YEAR

October 25, 1963	Ohio Psych, Seniors	April 24, 1964	Beauty Pageant and State Music Contest
October 26, 1963	Band Festival, Moberly	April 26, 1964	Spring Concert, Band, Glee Club, Mixed Chorus
November 1, 1963	Girl's Ensemble, Methodist Church	April 27, 1964	Student Government Day, Jefferson City
November 9, 1963	Agriculture Festival, Mexico	April 28, 1964	Mixed Chorus, Farber
November 16, 1963	Pie & Box Supper & Dance, Student Council	May 1, 1964	Sophomore Dance
November 22, 1963	Football Banquet	May 2, 1964	District Track Meet
December 6, 1963	Oration Contest, Speech Class (10)	May 4, 1964	District Golf Meet, Mexico
February 14, 1963	Sweetheart Dance, F.H.A.	May 8, 1964	Junior-Senior Banquet and Prom
March 3, 1964	Proficiency Typing Tests	May 11, 1964	Home Ec Style Show
March 5, 1964	KSTC Band Assembly	May 17, 1964	Baccalaureate
March 7, 1964	Band Carnival	May 18, 1964	Honor Society Banquet, Columbia
March 10, 1964	Faculty vs Seniors in Basketball	May 21, 1964	Graduation
March 12, 1964	Latin Banquet	May 22, 1964	Awards Assembly
March 16, 1964	All Conference Band Assembly		
March 18, 1964	Sub-District F.F.A.		
March 19, 1964	Basketball Banquet		
March 20, 1964	Variety Show, Mixed Chorus		
March 25, 1964	F.F.A. Sub-District, Palmyra		
April 3, 1964	Kirksville Contest		
April 4, 1964	F.F.A. District Meeting, Kirksville		
April 6, 1964	Student Council Election		
April 13, 1964	Vocal Conference Meet		
April 11, 1964	F.F.A. District Meeting, Kirksville		
April 15, 1964	F.F.A. Banquet		
April 17, 1964	Senior Play		
April 18, 1964	French Banquet		



WILSON, BETTY  
R.N. Jewish  
Hospital, St. Louis



COOKS

From left: Mrs. Ross Torreyson, Mrs. Earl Selby, Mrs. Turner Chandler, Mrs. Grace McNaughton, Mrs. John Dowell.



MRS. EARL SELBY  
Hot Lunch Supervisor



CUSTODIANS  
Frank Luttrell, Ivan Allen



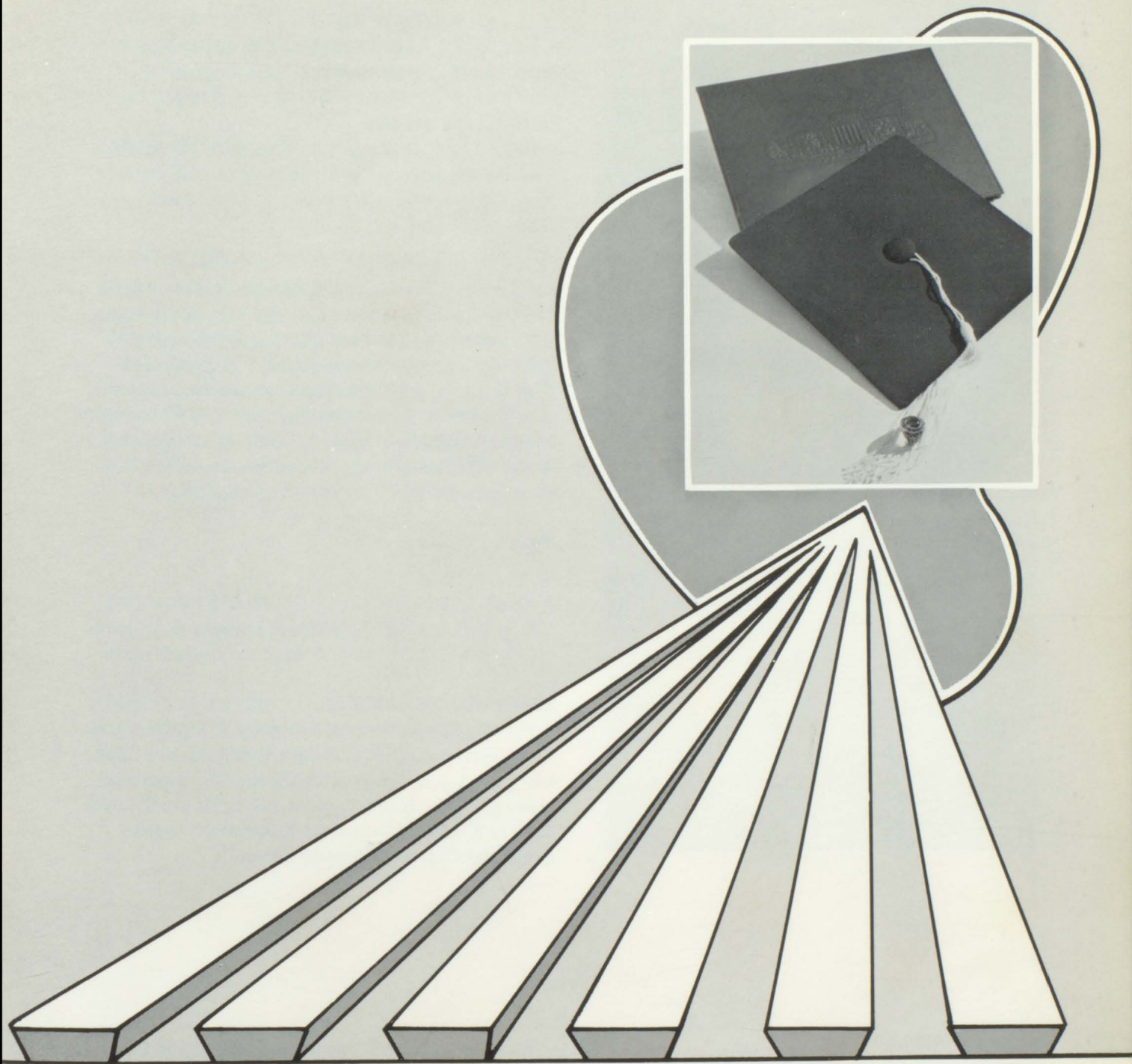
BUSSES LOADING



BUS DRIVERS

Maurice Owens, Chester Kuntz, Emmitt Durham, Lyster Eddens, Arch Ball, Howard Jesse  
MORRIS GIVEN DUREN





*SENIORS*



LERA ANN ARMONTROUT  
F. H. A. 1, 2, 3, 4; Pep Club 1, 2, 3, 4; Senior Play 4;  
Annual Staff 4; Glee Club 2, 3

RICHARD LEE BAGLEY  
Football 1, 2, 3, 4; Lettered 3, 4; Track 1; "C" Club  
3, 4; Regents Scholarship 4



EMILY MELISSA BAKER  
Pep Club 1, 2; Band 1, 2, 3, 4; Lettered 1, 2, 3, 4; Quint  
City All-Conference Band 2, 3; Egyptian Music Camp  
1; Missouri All-State Band and Chorus 1; National  
Honor Society 3, 4; Library Staff 1, 2, 3, 4; Science  
Club 1, 2, 3, 4; Secretary-Treasurer 3; National Sci-  
ence Foundation Fellowship Southern Illinois University  
2; State University of Iowa 3; NOMA Spelling Award 2;  
NOMA Arithmetic Award 3; Curators Award 4;  
Salutatorian 4

JERRY L. BARNES

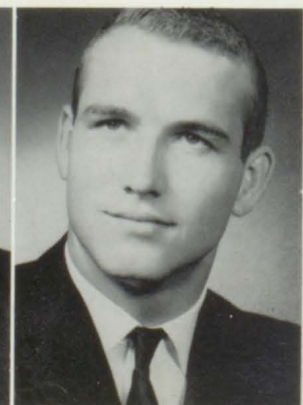


JOHNNY L. BARNES  
F. F. A. 1, 2, 3, 4; Football 1, 2, 4; Lettered 4; Track 3,  
4; Lettered 3, 4; "C" Club 3, 4

KAREN HUTCHENS BARTEE  
F. H. A. 1; Class Officer 3; Secretary 3; Pep Club 1, 2,  
3, 4; Cheerleader 1, 2, 3, 4; Glee Club 1, 2, 3, 4; Girls  
Ensemble 1, 2, 3, 4; Mixed Chorus 2, 3, 4; Egyptian  
Music Camp 2; Beauty Pageant 1, 2, 3; National Honor  
Society 3, 4; Student Council 4; American Legion  
Oratorical Contest 4; Curator's Award 4

JAMES LAWRENCE BEANE  
Class Officer 1, 4; Vice-President 1, 4; Football 2, 3, 4;  
Lettered 2, 3, 4; Basketball 2, 3, 4, Lettered 2, 3, 4;  
Track 1, 2, 3, Lettered 1, 2, 3; Band 1, 2, 3, 4; Mixed  
Chorus 3, 4; "C" Club 1, 2, 3, 4, President 4; Senior  
Play 4; Quint-City Vocal Conference 4

ORMA EUGENE BEASLEY  
Football 1, 2, 3, 4, Lettered 2, 3, 4; All-Conference  
End 3; All-Conference Guard 4; Honorable Mention-  
End; Basketball 1, 2, 3, 4; Lettered 2, 3, 4; Track 1, 2, 3,  
4; Lettered 1, 2, 3, 4; F. F. A. 1, 2, 3, 4; Mixed Chorus 2,  
4; "C" Club 1, 2, 3, 4; Quint-City Vocal Conference 4;  
Central Missouri All-Stars 4; All-Area Third Team 3



LINDA BERREY

F. H. A. 2; Class Officer 3; Treasurer 3; Pep Club 1, 2, 3, 4; Beauty Pageant 1, 2, 3, 4; Honor Society 3, 4; Glee Club 1, 2, 3, 4; Newspaper Staff 4

ROBERT LeROY BISHOP

Football 1, 2, 3, Lettered; Track 1, 2, 3, Lettered; "C" Club 2, 3

JEANETTE BROOKS

Pep Club 4; Beauty Pageant 4

VICKIE L. BROOKS

F. H. A. 1; Class Officer 2, 3, Secretary 2, Student Council Representative 3; Pep Club 1, 2, 3, 4, Treasurer 4; Cheerleader 2; Senior Play 4; Beauty Pageant 1, 2, 3, 4; Annual Staff 4, Editor 4; Honor Society 3, 4, Vice-President 4; Newspaper Staff 4; Curator's Award 4; American Legion Oratorical Contest 4

JUDY ANNE BRUCE

F. H. A. 2, 3, 4; Pep Club 1, 2, 3, 4; Glee Club 3, 4; NOMA Arithmetic Test 4

GARY L. CLAXTON

Football 1, 2, 3, 4, Lettered 2, 3, 4; All-Conference Tackle 4; All-District Honorable Mention Tackle 4; Basketball 1; Track 1; "C" Club 2, 3, 4



JAMES KING COX

Football 1, 2, 3; Basketball 1, 2, 4, Lettered 4; Track 1, 2, 3, Lettered 3; Mixed Chorus 3, 4; "C" Club 3, 4; Senior Play 4; Quint-City Vocal Conference

BONNY SUE CRIGLER



NEWTON McCOOK DAVIS JR.

ERNIE R. DUBES

F.F.A. 1, 2, 3, 4, Vice-President 4; Football 2, 3, Lettered 2, 3; "C" Club 2, 3, 4

RAYMOND GEORGE ENGERT, III

Football 1, 2, 3, 4, Lettered 2, 3, 4; Basketball 1, 2, 3, 4, Lettered 2, 3, 4; Track 1, 2, 3, Lettered 2, 3; "C" Club 2, 3, 4; 3rd Team All-District Football 3; All-Area 3rd Team Football 3; Quint-City All Conference 2nd Team Football 3; Quint-City All Conference Honorable Mention Basketball 3; Quint-City Conference 1st Team Football 4; Honorable Mention All District Football 4; Honorable Mention All Area Football 4; North Central District All Stars Honorable Mention Football 4; Quint-City All Conference Honorable Mention Basketball 4; North Shelby All Opponents Squad 4; Mixed Chorus 2, 3, 4; Band 1; Athletic Scholarship 4

DONNA KAY EWENS

F.H.A. 1, 2; Pep Club 1, 2, 3; Glee Club 1, 3

MIKE FRY

Class Officer 2, Secretary 2; Basketball 1, 2, 3, 4, Lettered 2, 3, 4; Mixed Chorus 2, 3, 4; "C" Club 2, 3, 4, Vice-President 4; Senior Play 4; Student Council 1, 4, President 4; Quint-City Conference Basketball 4; All-District Basketball Team 4; Mr. C.H.S. 4; Golf, 2, 3, 4, Lettered 2, 3, 4; Quint City Vocal Conference 4

SUSAN RAYE GRITTON

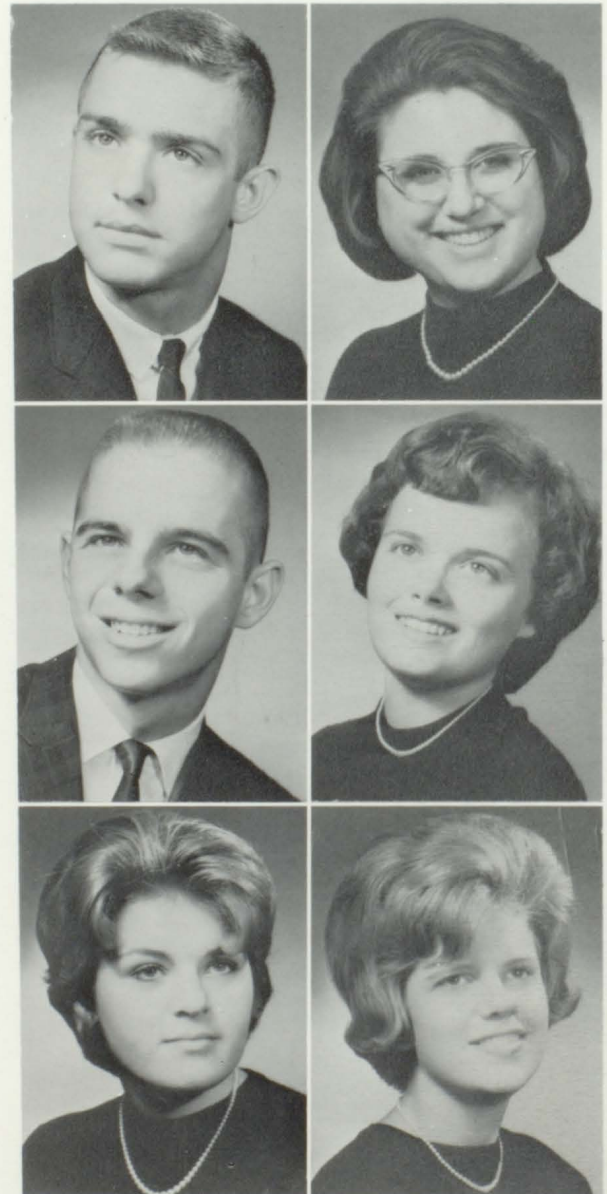
F.H.A. 2; Pep Club 1, 2, 4; Band 1, 2; Pep Band 1, 2; Senior Play 4; Beauty Pageant 4

SUE CAROL HANNA

Pep Club 1

ELAINE KATHRYN HANSEN

Class Officer 1, 4, President 1; Student Council Representative 4; Pep Club 1, 2, 3, 4, Cheerleader 1, 2, 3, 4; Band 1; Glee Club 1; Senior Play 4; Beauty Pageant 1, 2, 3, 4; Miss Hair 3; Annual Staff 4; American Legion Oratorical Contest 4



JUDITH ADA HARGUS  
F.H.A. 2, 3, 4, President 4

LAURA ANN HATFIELD  
F.H.A. 2, 3, 4; Glee Club 1; Sweetheart Queen 4



SHIRLEY ANN HAYDEN  
F.H.A. 1; Glee Club 2, 3; Annual Staff 4; Honor Society 3, 4, Treasurer 4; Chance Business 4

BARBARA HECKMAN  
Annual Staff 4, Business Manager 4; Honor Society 3, 4, Vice-President 4; Merit Scholar 4; Betty Crocker Award 4; Outstanding Senior Class Member 4; Curator's Award 4; NOMA Spelling Award 2, 4; NOMA Arithmetic Award 4; Valedictorian 4, Chance Science 4

JOANN HEGERFELD

PAUL HICKEN

ROBERT COX HOLLANDER  
Basketball Manager 3, 4; Band 1, 2, 4, All-Conference Band 2; Mixed Chorus 2, 3, 4; "C" Club 3, 4; Senior Play 4; Science Club 1; Quint City Vocal Conference 4

JANICE VICTORIA HOMBS  
F.H.A. 3, 4; Girl's State 3; Glee Club 1, 2, 3, 4; Library Staff 2, 3, 4

IRIS JEAN HOUSTON

F. H. A. 2, 3, 4; Pep Club 1, 2, 3, 4; Glee Club 1, 2;  
Science Club 1, 2, 4

MARY SUE HUDSON

F. H. A. 1, 4; Class Officer 4, Treasurer 4; Student  
Council 4; Barnwarming Queen 1; Best Dressed Girl  
3, 4, Miss C. H. S. 4; Beauty Pageant 3, 4



PATTY HUTCHENS

F. H. A. 1; Pep Club 1, 2, 3, 4; Glee Club 1, 2

BARBARA JANE ISGRIG

Pep Club 1, 2

DONNA JONES

F. H. A. 1, 2, 3, 4; Pep Club 1, 2, 3, 4; Glee Club 1, 2, 3,  
4

SUE ELLEN JONES

F. H. A. 1; Pep Club 1, 2, 3, 4, President 4; Senior Play  
4; Beauty Pageant 1, 2, 3, 4; Annual Staff 4; Honor  
Society 3, 4, Secretary 3; Newspaper Staff 4; Curator's  
Award 4; NOMA Spelling Award 4; Glee Club 3; Dis-  
trict Business Shorthand Contest, Kirksville 3

MARY EDNA LONG

F. H. A. 1, 4; Pep Club 1, 2, 3; Glee Club 1, 2, 3, 4

SHERRY GAYLE MANSFIELD

F. H. A. 1, 2, 3, 4; Pep Club 1; Glee Club 2; Annual  
Staff 4



ANN MILSTER  
F. H. A. 1

PRISCILLA ANN MOW  
F. H. A. 1; Class Officer 3, Vice-President 3; Glee Club 1, 2, 3, 4; Mixed Chorus 2, 3, 4; Ensembles 1, 2, 3, 4; Pep Club 1, 2, 3, 4; Cheerleader 1, 2, 3, 4; Student Council 4; Homecoming Attendant 3, 4; Senior Play 4; Egyptian Music Camp 2; Beauty Pageant 1, 2, 3, 4, Miss Stature 1, 2; Annual Staff 4; American Legion Oratorical Contest, Second place 4; Curator's Award 4; Quint City Vocal Conference 4

ROBERT H. OLIVER  
F. F. A. 1, 2, 3, 4, Chapter Star Farmer 2, Reporter 3, President 4; Football 1, 2

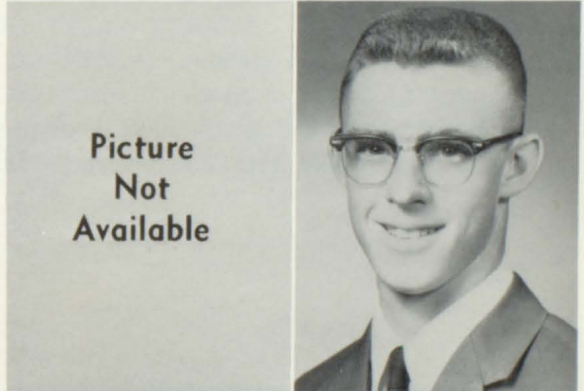
ROBERT LEE OSBORNE  
Football 2; Basketball 1, 2, 3, 4, Lettered 4; Band 1, 2 Lettered 2; Pep Band 1; Quint City Vocal Conference 4; Mixed Chorus 2, 3, 4; "C" Club 4; Senior Play 4

RICHARD PALMER

BILL PAGETT

DONALD W. PETERSON  
Class Officer 1, 2, Treasurer 1; Student Council Representative 2; Sophomore Pilgrimage 2; Student Council 4, Vice-President 4; Senior Play 4

PHILLIP POWELL  
Football 1, 3, Basketball 3, Manager 3; Band 1, 2, 4, Lettered 2, "C" Club 3, 4



ANNETTE POWER  
F. H. A. 1, 2; Pep Club 3, 4

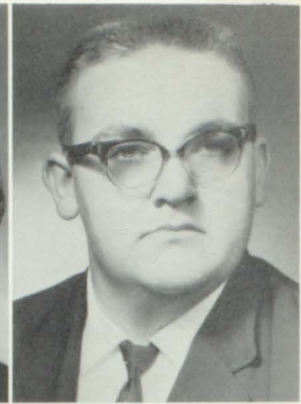
DALE PRICHARD  
Band; Senior Play 4

KENNETH C. RANDOLPH, JR.  
F. F. A. 2, 3; Honor Society 3, 4, Treasurer 4; Science  
Club 3, 4, President 4

CYNTHIA THIES RAY  
F. H. A. 3, 4; Pep Club 1

MARGARET LEE REDINGTON  
F. H. A. 1, 2, 3, 4

MARGARET E. REXROAT  
F. H. A. 1, 2, 3, 4; Pep Club 1, 2, 3; Annual Staff 4



CHARLES RICE  
Mixed Chorus 3, 4

MARY ANNE RICHARDSON  
F. H. A. 1, 2; Band 1, 2





JUDY RIEDEL

BILLIE SUE ROBINSON

Pep Club 1, 2; Band 1, 2, Lettered 1, 2; Mixed Chorus 2, 3, 4; Ensemble 1, 2, 3, 4; Glee Club 1, 2, 3, 4; Senior Play 4; Egyptian Music Camp 3; Quint City All-Conference Band 2; NOMA Spelling 3; NOMA Arithmetic 4; Science Club 1; Beauty Pageant 4; Quint City Vocal Conference 4



MARGARET ROLFE

Egyptian Music Camp 1; Class Officer, Class Historian 1, 2, 3, 4; Newspaper 4, Senior Editor 4; Pep Club 1, 2, 3, 4; Science Club 1, 2, 3, 4, Secretary-Treasurer 2; Mixed Chorus 2, 3, 4; Ensembles 1, 2, 3, 4; Curator's Award 4; Senior Play 4, Assistant Director 4; Glee Club 1, 2, 3, 4; Annual Staff 4; Honor Society 3, 4, Vice-President 3, President 4; Student Council 4; District Music Contest 2, 3, 4; State Music Contest 2; Oratorical Contest 4; Quint-City Vocal Conference 4; Girl Most Likely to Succeed 4



NANCY SANDERS

F.H.A. 2, 3, 4

LLOYD EUGENE SCHULTZ

F.F.A. 1, 2, 3, 4, Treasurer; State Farmer Degree G.M.O. Award, Second Place 2; G.M.O. Award 3, 4; First National Bank Award Second Place 3; First National Bank Award 4

JOHN WILLIAM SCHULTZ

F.F.A. 1, 2, 3, 4, Secretary 4; State Farmer Degree; F.F.A. Foundation Award 2; L.M.O. Award 3; First National Bank Award, Second Place 3; G.M.O. Award 4; First National Bank Award 4

ELIZABETH JUNE SEARS

Girls' State 3; Senior Play 4; Honor Society 3, 4, Secretary 4, President 4; Student Council 4; Oratorical Contest 4; Curators Award 4; Newspaper Staff 4; Chance Education 4

CLIFFORD SELBY

Class Officer 3, President 3; Football 1, 2, 3, 4, Lettered 2, 3, 4; Mixed Chorus 2, 3, 4; Quint City Vocal Conference 4; "C" Club 2, 3, 4; Senior Play 4; Band 1, 2, 3, 4; Quint City Conference Band 4





TONY MICHAEL SNEED

Class Officer 3, 4; Student Council Representative 3, President 4; Football 1, 2, 3, 4, Lettered 2, 3, 4; Track 1, 2, 3, 4, Lettered 2, 3, 4; Boys' State 3; "C" Club 2, 3, 4; Senior Play 4; Freedom Forum 2

BRENDA SQUIRES

F. H. A. 2, 3, 4; Pep Club 1, 2, 3, 4

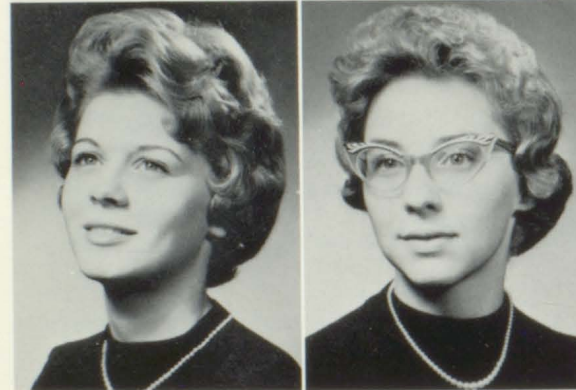


PAT STRADER

Senior Play 4

MARGOT LOU STURGEON

F. H. A. 1; Glee Club 1, 2, 3, 4; Mixed Chorus 2, 3, 4; Ensembles 1, 2, 3, 4; Pep Club 1, 2, 3, 4; Cheerleader 1, 2, 3, 4; Senior Play 4; Egyptian Music Camp 3; Beauty Pageant 1, 2, 3, 4, Miss Smile 3; Annual Staff 4; Honor Society 3, 4; Missouri Freedom Forum 2; Student Council 4, Secretary 4; Most Athletic Girl 3, 4; Curator's Award 4; American Legion Oratorical Contest 4; Quint City Vocal Conference 4



KAREN KAY THOMPSON

F. H. A. 1; Class Officer 2, 4, Vice-President 2, Secretary 4; Pep Club 1, 2, 3, 4, Secretary 4; Band 1, 2; Mixed Chorus 2, 3, 4; Ensembles 1, 2, 3, 4; Senior Play 4; Beauty Pageant 1, 2, 3, Miss Poise 2, Miss Centralia 3; Glee Club 1, 2, 3, 4; Annual Staff 4; Newspaper 4; Egyptian Music Camp 2; NOMA Arithmetic 4; Typing Award 3; District Typing Contest 3; District Extemporaneous Writing Contest 4; Quint-City Vocal Conference 4

CONNIE FAYE TIDBALL

F. H. A. 2, 3, 4, Regional F. H. A. Meeting and Chorus 2, Vice-President 3; Library Staff 3; Band 1, 2, 3, 4, Lettered 1, 2, 3, 4, Quint-City Conference Band 3; NOMA Arithmetic Award 4

ROBERT TORREYSON

Football 1; Basketball 1; Band 1, 2

DAVID MICHEAL UHRICH

F. F. A. 1, 2, 3, 4



MARY BETH VAUGHN

Pep Club 1, 2, 3, 4, Vice-President 4; Mixed Chorus 2, 3, 4; Ensembles 1, 2, 3, 4; Glee Club 1, 2, 3, 4; Student Council 2; Egyptian Music Camp 2; Senior Play 4; Beauty Pageant 1, 2, 3, 4; Annual Staff 4, Photographer 4; Newspaper 4; NOMA Spelling 4; District Music Contest 4

TOMMY BENTON WAINSCOTT

Football 1, 2, 3; Basketball 1, 2, 3, 4; Track 1, 2, 3

RUSSELL L. WALKER

F. H. A. 2, 3

SHIRLEY ANNE WEHRMAN

F. H. A. 2; Pep Club 1, 2; Band 1, 2; Senior Play 4; Glee Club 4

MARY KATHRYN WILLIAMS

F. H. A. 1, 2; Pep Club 1, 2; Glee Club 1, 2, 3, 4

NANCY SUE WILLS

F. H. A. 1; Pep Club 1; Annual Staff 4



JAMES EDWARD WILSON

Football 2, 3, 4, Lettered 3, 4; "C" Club 3, 4

GARY LEE WOOLFOLK



Senior Float "Stepping to Victory"



SENIOR CLASS OFFICERS - Karen Thompson, Secretary; Jim Beane, Vice-President; Mary Sue Hudson, Treasurer; Tony Sneed, President.

## SENIOR CLASS HISTORY

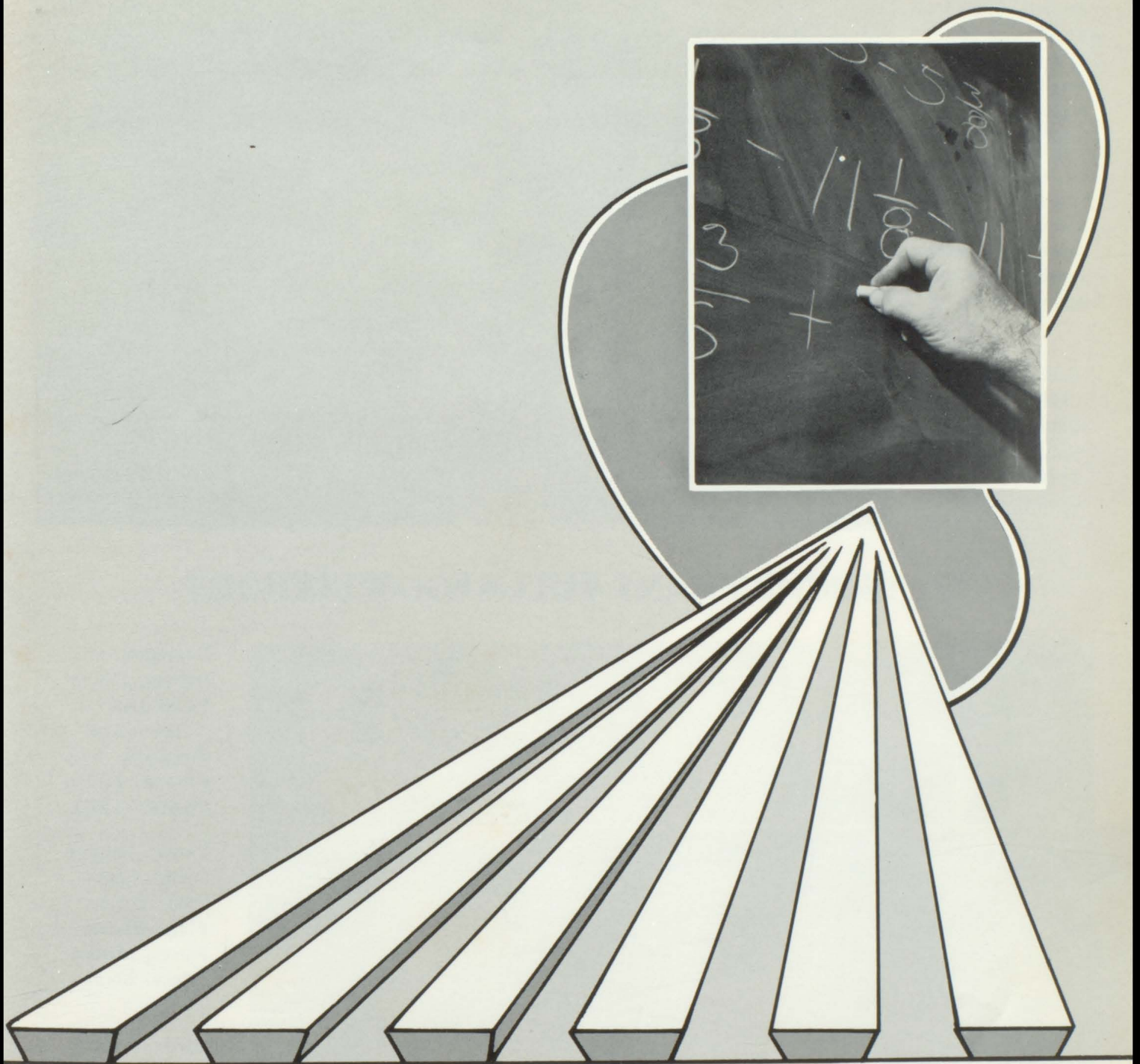
When our class started to C.H.S., we had 95 members, and our senior year we had 75 members left. Elaine Hansen was elected president of the freshman class; Jim Beane was vice-president; Mike Fry was secretary; and Donnie Peterson was treasurer. Margaret Rolfe was elected class historian for all four years of high school. Our class won second place in the Homecoming Parade with the float, "At Polls or Goals, Centralia's First." In the beauty pageant we received one title. Margot Sturgeon, Priscilla Mow, Karen Hutchens Bartee, and Elaine Hansen were "B" Team cheerleaders. Margaret Rolfe and Mary Beth Vaughn were chosen to attend Egyptian Music Camp. Priscilla Mow and Mike Fry were Student Council Representatives.

Our sophomore class was headed by Don Hellstern as president, Karen Thompson as vice-president, Vickie Brooks as secretary, and Patti Crutchfield as treasurer. "B" Team cheerleaders were Margot Sturgeon, Priscilla Mow, Elaine Hansen, Karen Hutchens Bartee, and Vickie Brooks. The sophomore float received honorable mention. Fifteen sophomores were initiated into the National Honor Society. Donnie Peterson went on the Sophomore Pilgrimage. Margot Sturgeon, Cheri Coldicott Christian, Don Hellstern, Steve Sandy, and Margaret Rolfe attended the first Missouri Freedom Forum held at M.M.A. in Mexico. Jim Beane and Don Hellstern were Student Council Representatives. In the Beauty Pageant we won two titles. Egyptian Music Camp was attended by Karen Hutchens Bartee and Priscilla Mow.

Elected to carry the burdens of our junior class were Clifford Selby, president; Priscilla Mow, vice-president; Karen Hutchens Bartee, secretary; and Linda Berrey, treasurer. Margot Sturgeon, Elaine Hansen, Priscilla Mow, and Karen Hutchens Bartee were "A" Team cheerleaders. Student Council Representatives were Vickie Brooks and Tony Sneed. Margot Sturgeon and Sue Robinson attended Egyptian Music Camp. Priscilla Mow was a Homecoming attendant. Our junior winners in the Beauty Pageant numbered two and Karen Thompson was "Miss Centralia." The theme of our prom was "Apple-Blossom Time." Selected to go to Girls' State were Betty Sears and Vicki Hombs. Alternates were Barbara Heckman and Karen Hutchens Bartee. Tony Sneed went to Boys' State.

Our senior year Tony Sneed was president, Jim Beane was vice-president, Karen Thompson was secretary, and Mary Sue Hudson was treasurer. Elaine Hansen and Betty Sears were Student Council Representatives. Priscilla Mow was a Homecoming attendant. Senior officers of the Student Council were president, Mike Fry; vice-president, Don Peterson; secretary, Margot Sturgeon; and treasurer, Jim Beane. Curators' Awards were given to nine senior girls. We received two titles in the Beauty Pageant this year. The seniors enjoyed a trip on May 18 to Bagnell Dam. They were also honored to have Rev. Fletcher Dodson for their Baccalaureate speaker and Mr. Charles E. Kauzlarich as the Commencement speaker.

The class chose as their colors, blue and silver. The flower was the sweetheart rose. My Best To You was the class song. Their motto was "I Have Promises To Keep and Miles To Go Before I Sleep." Thus did the history of the 1964 graduating class cease.



*CLASSES*

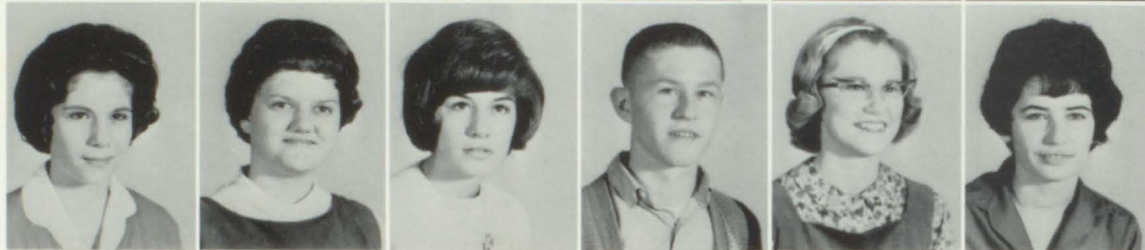
Adams, Stephen  
 Aldrich, Leona Kay  
 Alton, Lora Lee  
 Anderson, Sally  
 Arndt, Margaret  
 Barnes, Howard



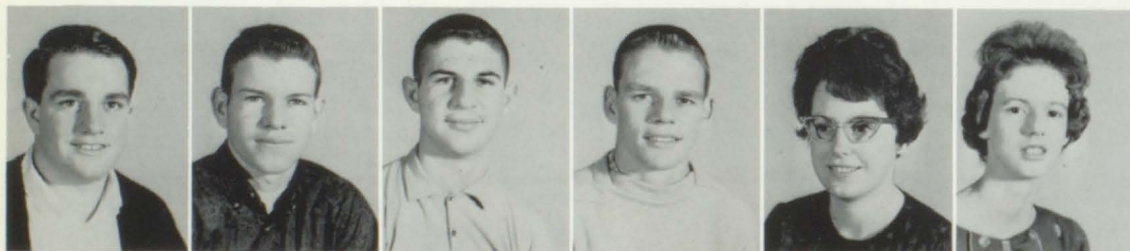
Bates, Glenda  
 Bates, James  
 Beamer, Jane  
 Bodeen, Kathleen  
 Boyer, Billy  
 Bundy, Rex



Canell, Celeste  
 Chandler, Bonnie  
 Clark, Cynthia  
 Claybrook, Jed  
 Collins, Diane  
 Cossey, Shirley



## JUNIORS PLAN FUTURE — WRITE



Davenport, Mike  
 Dollens, Howard  
 Dougherty,  
 James Alan  
 Dougherty, Jerry  
 Edwards, Barbara  
 Everhart, Linda



Ferrell, Virginia  
 Fisher, Nancy  
 Flatt, Donnie  
 Flatt, Ronnie  
 Forsee, Martha  
 Fricke, Norma



Gaffin, Anne  
 Geer, Dixie  
 Gibbons, Tom  
 Gibson, Mary  
 Harlow, Charles  
 Hicken, Warren



Huskey, Kenneth  
 Ingrum, Donald  
 Jennings, Neta  
 Johnson, Lexanna  
 Johnson, Ronald  
 Jones, Larry



Jones, Robert  
 Larry  
 Jones, Thomas  
 Ketter, Kay  
 Kinkead, Alan  
 Kirk, Nancy  
 Knowles, Kathy  
  
 Lear, Peggy  
 Lenz, Terry  
 Luttrell, Rita  
 Long, Dennis  
 McCauley, Howard  
 McDonald, Patricia  
  
 Major, Ed  
 Markwell, Gary  
 McGowan, Rita  
 Miller, Jon  
 Miller, Wanda  
 Myers, Diana

## THEMES, TAKE MERIT TESTS, ENTERTAIN





Pigg, Celeste  
Pool, Ellis  
Pool, Ruth Ann  
Reams, Ronald  
Riechers, Pat  
Rogers, Jodanna

Rosenfelder,  
Randall  
Sanders, Linda  
Schuermann, Tony  
Schultz, David  
Silver, Reyburn  
Simpson, Jacklyn

Smith, Susan  
Smoot, Harold  
Smoot, Jayne  
Spry, Cathy  
Stein, John  
Sydow, Gerald

Toalson, Bill  
Tuggle, Donna  
Vance, Joseph  
Warren, Sandra  
Windsor, Larry  
Williams, Barbara

## ADULTS AND SENIORS WITH BANQUET AND PROM



Williams,  
Virginia  
Willis,  
Opal  
Wilson,  
William



Wilson, Frederick  
Young, Virginia





Adams, Danny  
 Adams, Howard  
 Adkisson, Gary  
 Adkisson, Tommy  
 Armontrout, Carl  
 Armontrout, Margaret



Barnes, Connie  
 Beasley, Billy  
 Beckman, Barry  
 Berrey, Lindell  
 Billings, Theresa  
 Billings, Tim



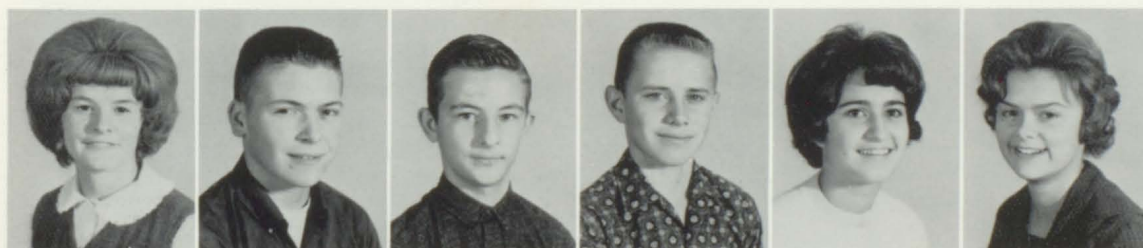
Boyd, Randy  
 Bradley, Larry  
 Brooks, Jerry  
 Bruce, Virginia  
 Bryson, Larry  
 Burton, Wanda



Chrisman, Judy  
 Christian, Robert  
 Cline, Rose Ann  
 Collins, Darla  
 Coureton, Kenneth  
 Cramlett, Janice



## SOPHOMORES TAKE APTITUDE TESTS,



Cramlett, Vicky  
 Davidson, Mark  
 Daugherty, Lawrence  
 Dorr, Rodney  
 Elliott, Karen  
 Elliott, Susan



Engert, Diane  
 Fenton, Linda  
 Ferebee, Marian  
 Fountain, Charla Mae  
 Fricke, Raymond  
 Fry, Tim



Gamache, Mary  
 Louise  
 Gibbons, Kathy  
 Green, George  
 Griggs, Ronnie  
 Harvey, James  
 Hatfield, Jenette



Henry, Donna  
 Herron, Tommy  
 Hibbs, Judy  
 Hilderbrand, James  
 Howser, Carl

Hudson, David  
 Isgrig, Rebecca  
 Johannsen, Patty  
 Johnson, Naomi  
 Kent, James

Ketter, Jim  
 Lincoln, Susan  
 Long, Linda  
 Long, Herbert  
 McCarty, Glenda

McLeod, Mike  
 McManama, Jim  
 Marshall, Gayle  
 Marquette, Darrell  
 Mason, Marilyn

## CHOOSE OBJECTIVES, AND

Mathews, Darrell  
 Meeks, Brenda  
 Mills, Gary  
 Milster, John



Mortimer, Barbara  
 Mustain, Susan  
 Powers, Glenda  
 Prater, Dennis



Prichard, Claudia  
 Randolph, Gary  
 Rasmussen, Mary  
 Reams, Jack





Reams, Mike  
Reams, Sharon



Reeves, Mary Francis  
Rexroat, Marie



Rice, Shari  
Riddle, Rebecca



## STRIVE FOR MATURITY



Roberts, Beverly  
Roddy, Connie  
Rogers, Vera  
Rohr, Gayle  
Rolfe, Vincent  
Schramm, Linda

Snell, Bill  
Stoeckman, Wayne  
Stoneberger,  
Loretta  
Torreyson, Eddie  
Torreyson, Susan  
Turner, Mona

Vance, Rodney  
Veltrop, Don  
Wainscott, Susan  
Wallsmith, Sally  
Watts, Jerry  
Weitkemper, Bill

White, Mike  
Williams, Roger  
Willis, Jackie  
Wilson, Greg  
Yund, Dennis



Adams, Randy  
 Adams, Randy  
 Armontrout, Keith  
 Arndt, Martha  
 Beamer, Gary  
 Bishop, Donald

Brooks, Mike  
 Bryson, Mickie  
 Burson, Charles  
 Bagley, Charles  
 Bakke, Sally Jo  
 Baldwin, Carol

Campbell, Walter  
 Christian, Gayle  
 Claxton, Tony  
 Colvin, Mike  
 Conrad, Glenda  
 Conrad, Harry

Coolley, Kenny  
 Cottrill, Irvin  
 Courton, Joe  
 Cramer, Sherman  
 Daugherty, Donnie  
 Davenport, Howard

## FRESHMEN GET ACQUAINTED,

Davenport, Keith  
 Davenport, Randy  
 Decker, Ester  
 Dollens, Becky

Dollens, Charles  
 Dollens, Dotty  
 Edwards, Lois  
 Fenton, Tommy

Fink, Candy  
 Gibson, Gary  
 Hockman, Joyce  
 Hombs, Roy

Humphrey, Wayne  
 Hutchens, Ronnie  
 Ingrum, Barbara  
 Jesse, Robert



Jesse, Roberta  
 Johanssen, Albert  
 Johnson, June  
 Johnson, Linwood



Jones, Linda  
 Jones, Russel  
 Knight, Martha  
 Kollmann, Dennis



Laytham, Linda  
 Lenz, Billy  
 Long, Jimmy  
 Luttrell, Donna



McKenzie, Gene  
 Mackey, Sherry  
 Maxwell, Pam  
 Mechlin, Jon



## TAKE OHIO TESTS, AND



Miller, Donna  
 Miller, Patty  
 Mills, Dennis  
 Myers, Randy



Nelson, Freddy  
 Nowlin, Mary  
 Offitt, Ann  
 Peel, Donald



Pope, Harold  
 Powell, David  
 Reams, Clyde  
 Reeves, Donna Jo



Redding, Floyd  
Rice, Rosetta  
Richardson, Brenda  
Riddle, Albert  
Riedel, Ronnie  
Roberts, Sandra



Robertson, Claudine  
Rogers, Bob  
Skaggs, Bill  
Stanford, Gary  
Thies, LaVerne  
Tidball, Gary



Tuggle, Joe  
Vaughn, Sara Jane  
Walker, Paulette  
Wallsmith, Geraldine  
Warden, Ronnie  
Westfall, Sandra



Whithaus, David  
Wheeling, Janet  
Wilkerson, Susanne  
Williams, Eddie  
Williams, Milton  
Wright, Patricia



Young, Dale

## DEVELOP SCHOOL SPIRIT





Typing



Math

Bookkeeping



Latin

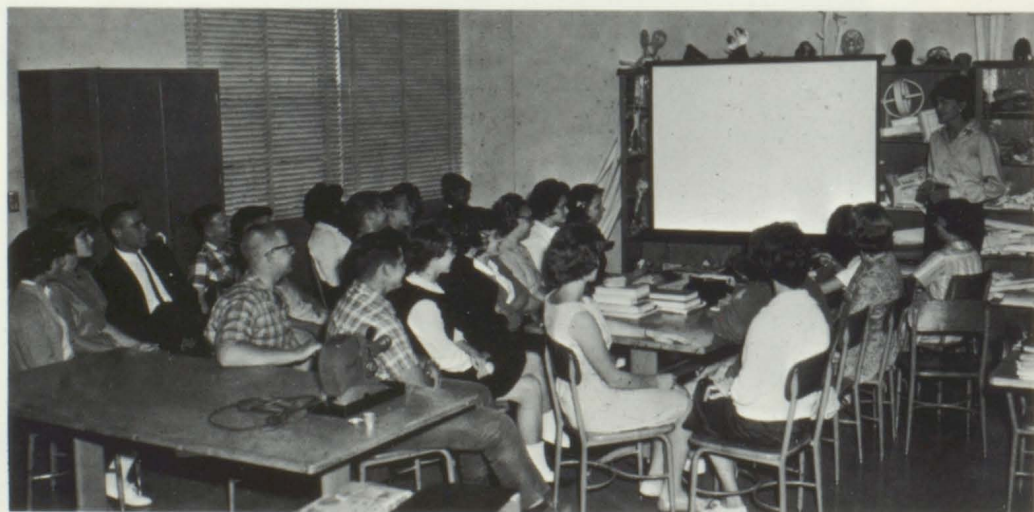




Drafting

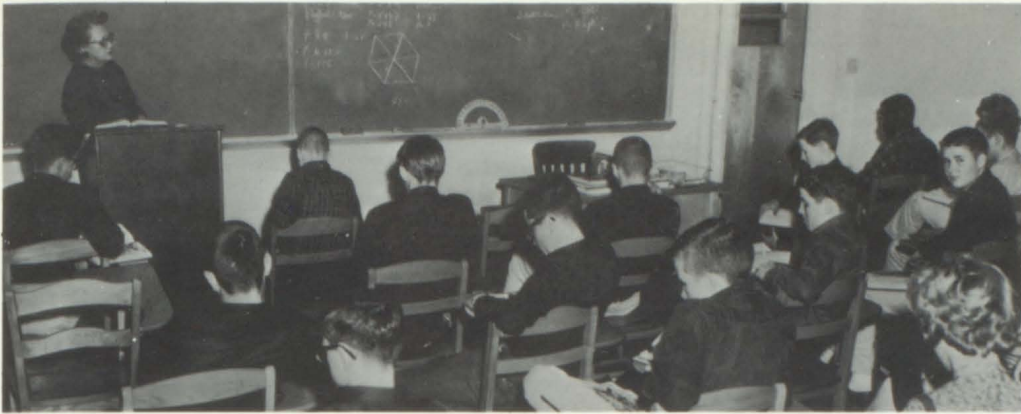


Speech



Art





English



Citizenship



American Government



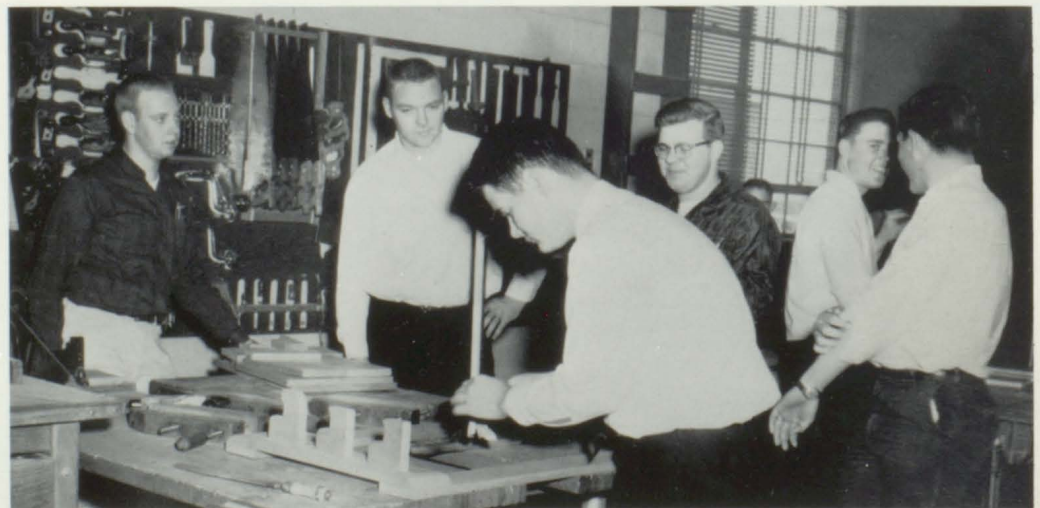
Home Economics

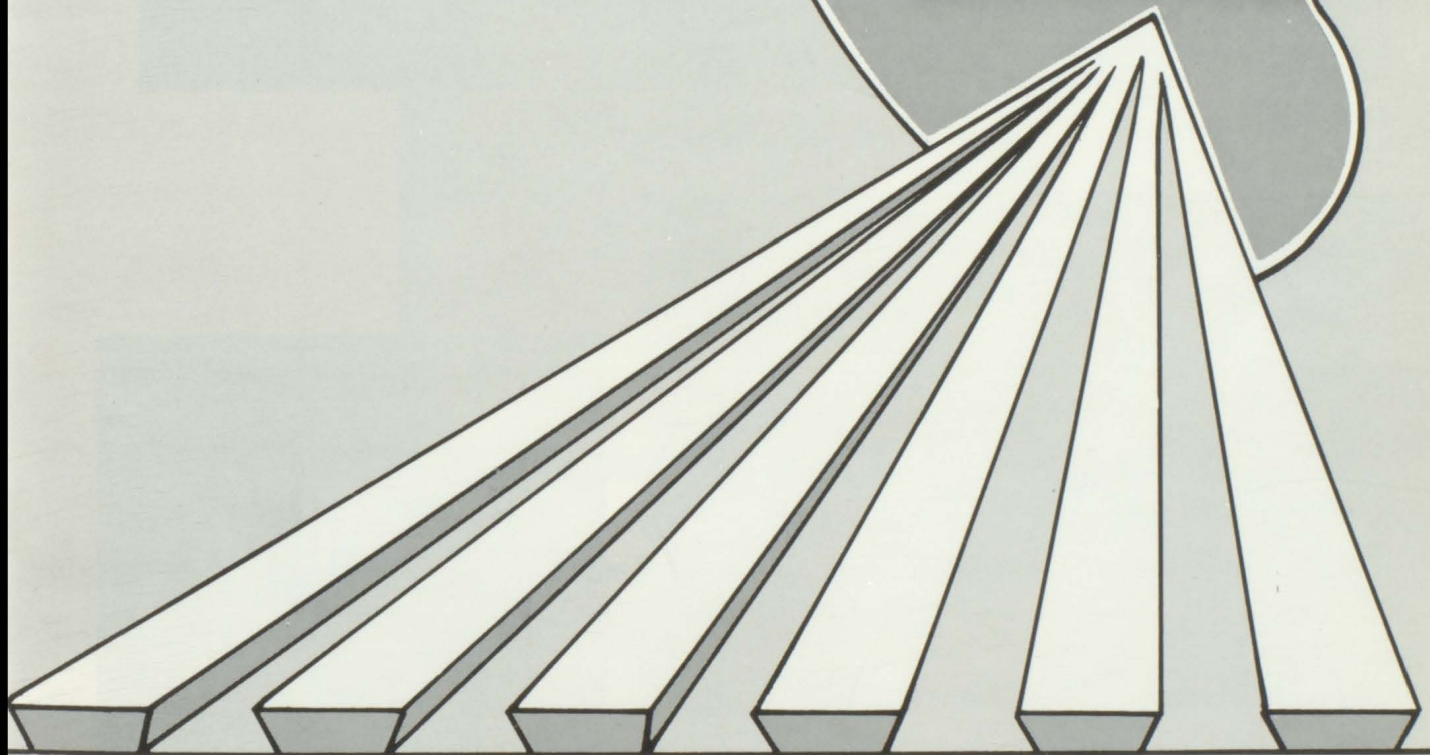
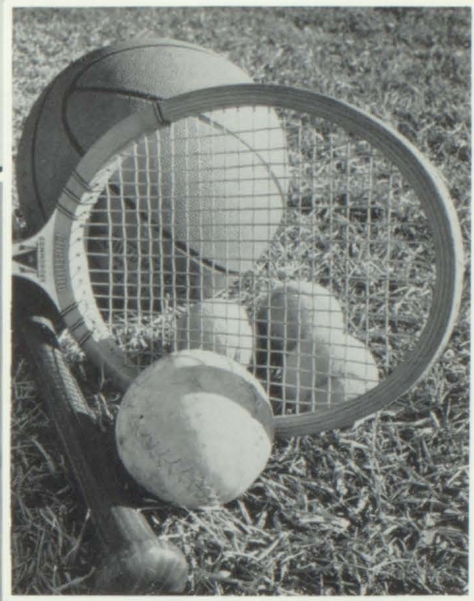
French



Secretarial Practice

Woodworking





*ATHLETICS*

# FOOTBALL



The 1963-64 Centralia Panther Team



Coach Whispers Encouragement



A team's best friend



One Man Game?



The sideline is excited



Go, team, Go!



The group sighs

# BASKETBALL



Left to Right: Tommy Wainscott, Ronnie Johnson, Gene Beasley, Raymond Engert, Jerry Daugherty, Bill Sims, Coach Traicoff, Elton Fay, Jim Beane, Mike Fry, Bob Osborne, Charles Harlow.



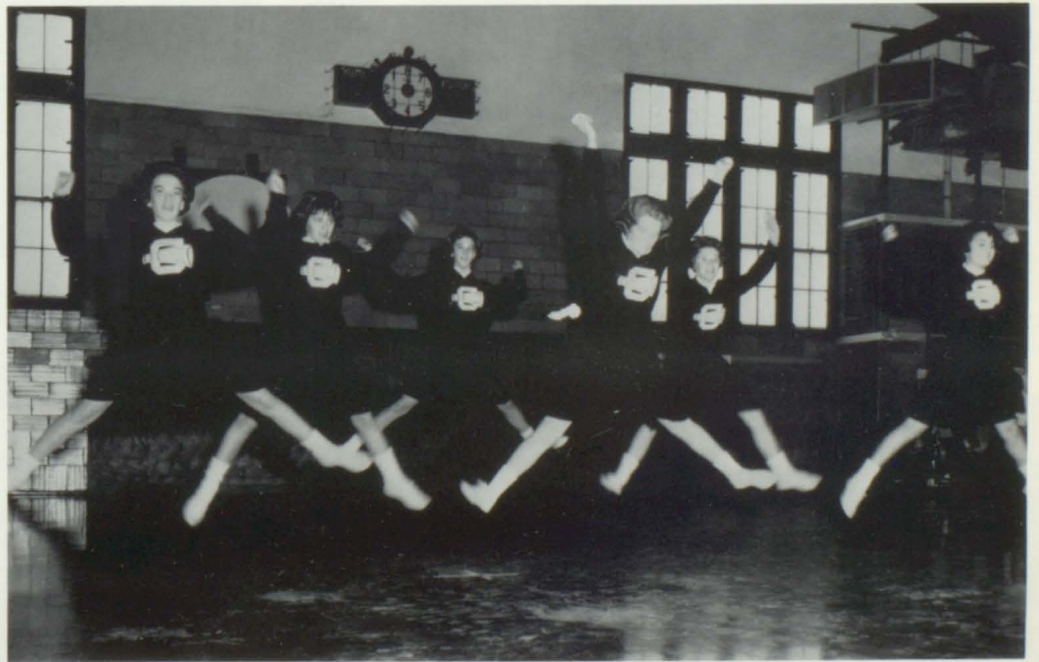
Basketball Banquet



# BASKETBALL

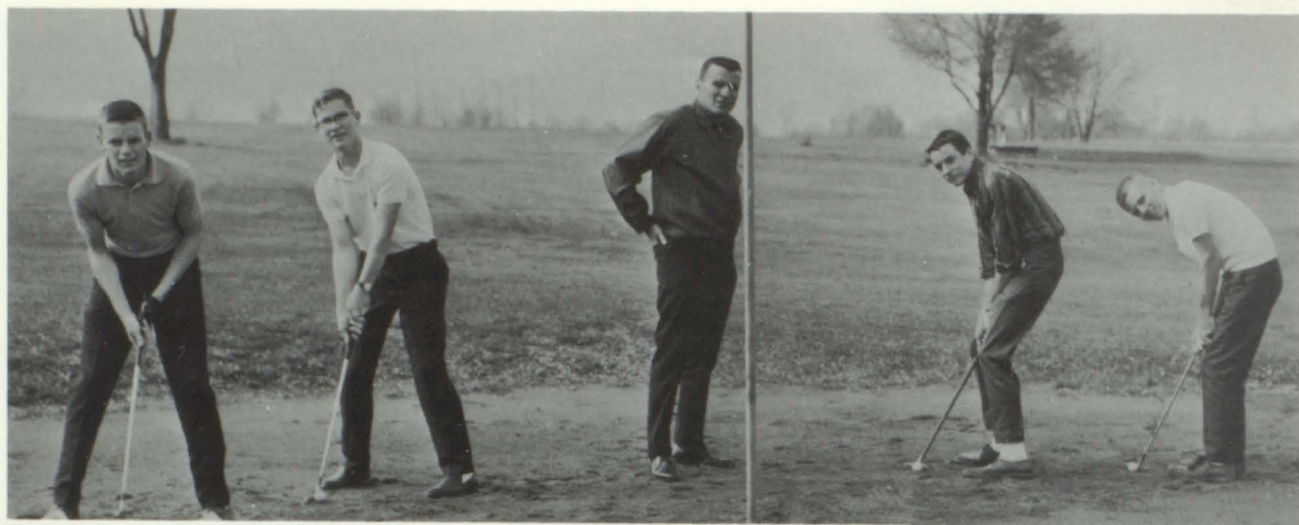


BOTTOM ROW, Left to Right: Tim Fry, Howard Adams, Dennis Long, Barry Beckman, Bill Beasley.  
TOP ROW, Left to Right: Jed Claybrook, Gary Randolph, Vincent Rolfe, Mike White, Gregg Wilson,  
Bob Rogers, Tommy Jones, Coach Sloan.



"Yea Team!"

# GOLF TEAM



Left to Right: Jerry Daugherty, Bill Toalson, Coach Traicoff, Barry Beckman, Gene McKenzie.

# TRACK



Relay Runners

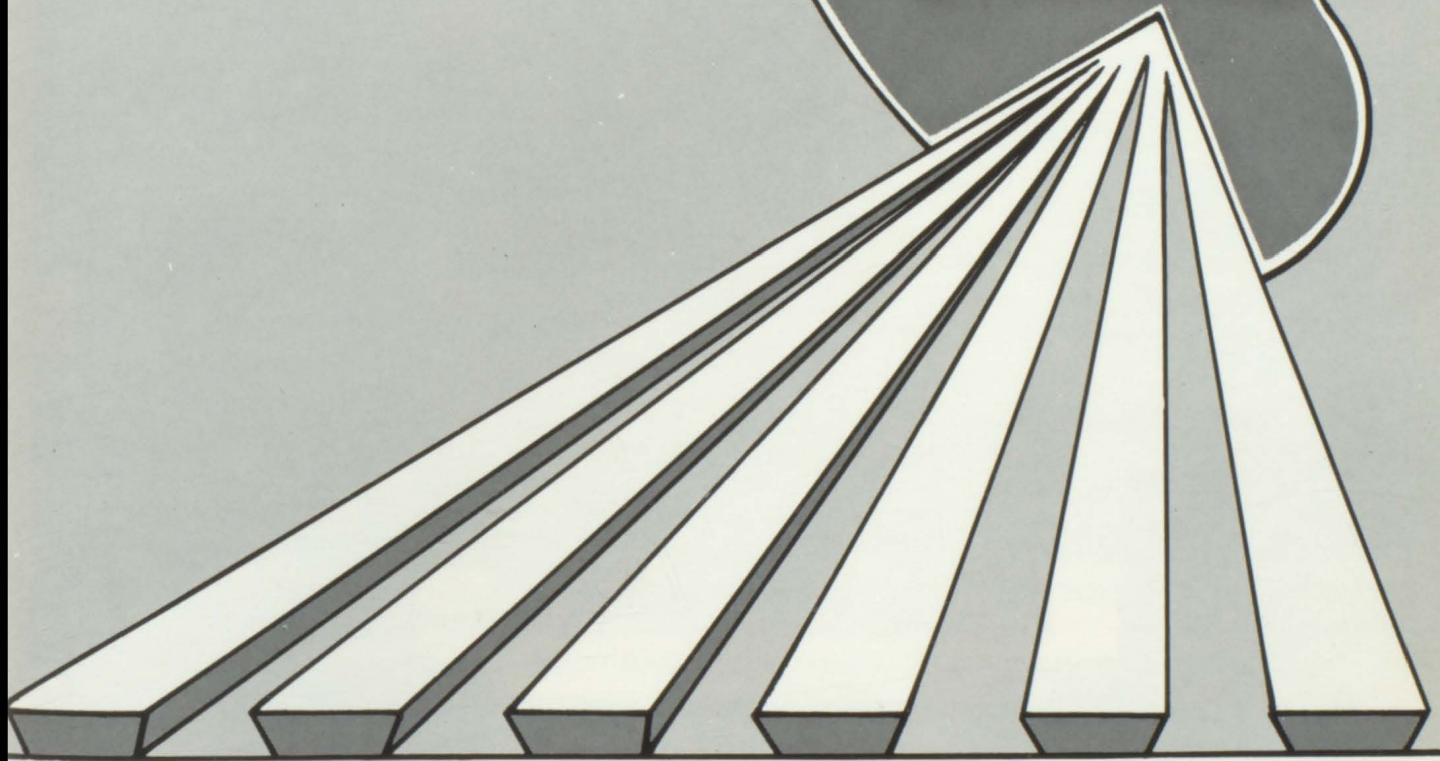


Pole Vault



The Team





# ACTIVITIES

# SUPERLATIVES

Friendliest Boy and Girl  
 Sally Anderson - Junior  
 Elton Fay - Sophomore



Most Likely to Succeed Boy  
 and Girl  
 Margaret Rolfe - Kenneth Randolph  
 Seniors



OUTSTANDING CLASS MEMBERS  
 Freshman - Bob Rogers



Junior -  
 Kathy Knowles



MISS C. H. S.  
 Mary Sue Hudson



MR. C. H. S.  
 Mike Fry



Best Dressed Boy and Girl  
 Howard McCauly - Junior  
 Mary Sue Hudson - Senior



Most Athletic Boy and Girl  
 Margo Sturgeon - Ray Engert  
 Seniors



Sophomore - Rebecca Riddle



Senior -  
 Barbara Heckman



# HOMECOMING

October 18, 1963



Priscilla Mow, Senior



Queen Donna Henry, Sophomore



Sally Anderson, Junior



Suzanne Elliott, Sophomore



Karen Elliott, Sophomore



Queen Donna being crowned by Mike Fry



"Action"



# SENIOR PLAY

## "THE GHOUL FRIEND"



The Cast



Presentation to producers



### THE CAST

Dan Merrick - Jim Beane  
 Lolly Merrick - Karen Thompson  
 Mrs. Merrick - Mary Beth Vaughn  
 Bongo - Clifford Selby  
 Daphne - Elaine Hansen  
 Marina - Priscilla Mow  
 Professor Gaines - Bob Osborne  
 Cele Wallace - Margo Sturgeon  
 Vic Storm - Don Peterson  
 Mrs. Dunlap - Sue Robinson  
 Seymour - Jim Cox  
 Mad Devlin - Tony Sneed

Mr. Spence - Mike Fry  
 Sergeant Rollins - Dale Prichard  
 Bobbi - Vickie Brooks  
 Deb - Betty Sears  
 Elva - Shirley Wehrman  
 Draculette - Pat Strader  
 Graveyard Gracie - Lera Armontrout  
 Big Daddy Corput - Bob Hollander  
 Assistant Manager - Margaret Rolfe  
 Prompters and Make-up - Sue Jones  
 and Susan Gritton



# 1964 BEAUTY PAGEANT



Left to Right: Mary Beth Vaughn, Miss Stature; Cynthia Clark, Miss Smile; Sally Anderson, Miss Hair; Rita Megown, Miss Centralia; Veiled Profit; Karen Thompson, Miss Centralia of 1963; Sally Bakke, Miss Poise; Elaine Hansen, Miss Personality; Sherry Mansfield, Miss Eyes.



MISS RITA MEGOWN

# JUNIOR-SENIOR PROM "MOONLIGHT AND ROSES"



The Dance Floor



Queen Sue Ellen Jones  
King Clifford Selby



Sweet Music



The Royal Dance



Punch Table



The Band



## F.H.A.

Their officers are: President, Judy Hargus; Vice-President, Ellis Ann Pool; Secretary, Pat Riechers; Treasurer, Bonnie Chandler; Advisor, Mrs. Grove; Chapter Mother, Mrs. Riechers. They had a HoBo Day in which the members worked on odd jobs for Centralians. Their float won fourth place at Homecoming. They had a Sweetheart Dance on Valentine's Day which is a favorite activity of the girls. Several members attended a style show at Stephens College in the spring.



## F.F.A.

The Future Farmers of America have many money-making projects, one of which is buying scrap metal from the A. B. Chance Company and selling it to other chapters. They had a Barnwarming Dance on October 26. They also had skating parties each month during the winter. They had their annual Hog Sale on October 9, which was very successful. The boys make gates, wagons, and many other useful articles. Everyone is always doing something.

## "C" CLUB



OFFICERS: President, Jim Beane; Vice-President, Mike Fry; Secretary-Treasurer, Ronnie Reams; Sponsors, Coach Sloan and Coach Traicoff. The "C" Club members helped decorate and sponsor the Homecoming Dance.

## PEP CLUB



OFFICERS: President, Sue Ellen Jones; Vice-President, Mary Beth Vaughn; Secretary, Karen Thompson; Treasurer, Vickie Brooks; Sergeant-at-Arms, Linda Berrey; Student Council Representative, Mary Louise Gamache; Sponsor, Mabel Curtis. The Pep Club worked at football and basketball games, held pep assemblies, decorated for the Homecoming Dance, and decorated the football field for home games. They worked very hard to help promote sportsmanship and school spirit.





## **"A" TEAM CHEERLEADERS**

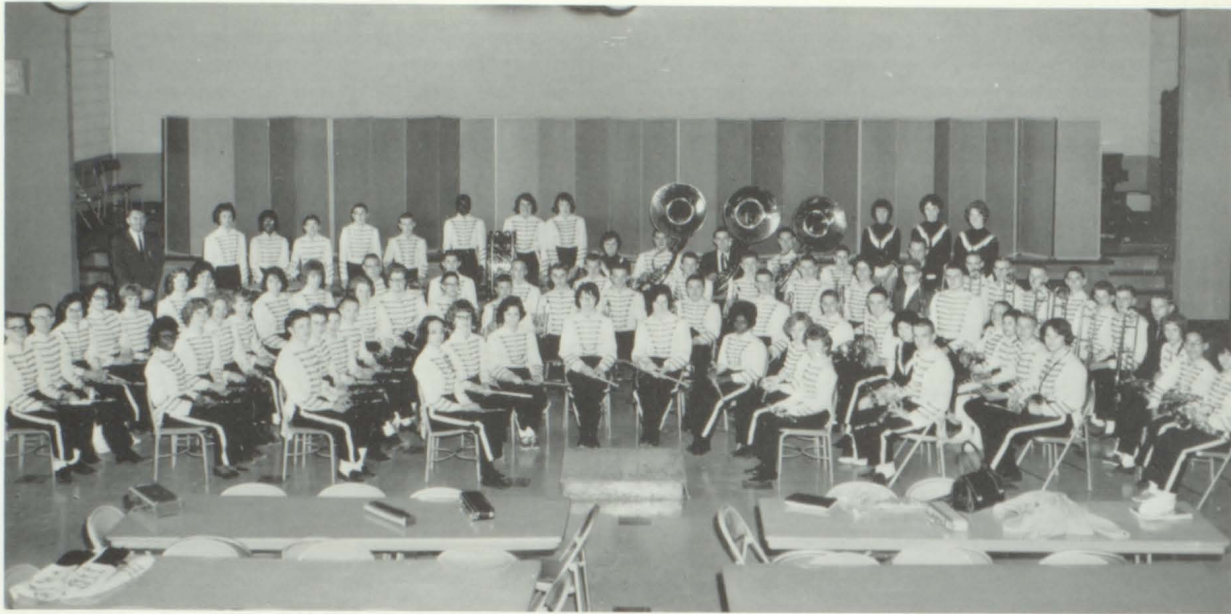
Buzzy Alton, Elaine Hansen, Priscilla Mow, Margot Sturgeon, Peggy Arndt.



## **"B" TEAM CHEERLEADERS**

Barbara Ingram, Gayle Rohr, Darla Collins, Sally Bakke, Karen Elliott, Kathy Gibbons.

## BAND



The Band started off with the Soybean Festival at Mexico, Missouri. They also participated in the Little Dixie Festival in Moberly, Missouri. Several of the members are trying out for the All Conference Band. In Mexico, the District Contest was entered by many of the members. The band also played at the home football games and basketball games.

## DRUM MAJOR AND MAJORETTES



DRUM MAJOR: Donnie Daugherty.

MAJORETTES, Left to Right: Susie Elliott, Reyburn Silver, Rita Megown, Diane Collins, Susie Wainscott, Donna Henry.



## GIRL'S ENSEMBLE

FIRST ROW: Buzzy Alton, Reyburn Silver, Susan Lincoln, Linda Schramm, Peggy Arndt, Jackie Simpson. SECOND ROW: Diane Collins, Margot Sturgeon, Sally Anderson. THIRD ROW: Mary Beth Vaughn, Priscilla Mow, Margaret Rolfe, Karen Thompson, Jody Rodgers, Billie Sue Robinson, Kathy Gibbons.



## GLEE CLUB

FIRST ROW: Opal Sue Willis, Vickie Hombs, Shirley Wehrman, Sally Wallsmith, Teresa Billings, Barbara Ingram, Peggy Arndt, Jackie Simpson, Barbara Mortimer, Donna Jones, Linda Berrey, Pam Maxwell, Virginia Williams, Judy Bruce. SECOND ROW: Connie Roddy, Wanda Burton, Linda Long, Mary Gibson, Jackie Willis, Buzzy Alton, Reyburn Silver, Susan Lincoln, Sharon Reams, Mary Louise Gamache, Beverly Roberts, Candy Fink, Becky Dollens. THIRD ROW: Nancy Fisher, Nancy Sanders, Ruth Ann Pool, Kathy Bodeen, Cynthia Clark, Mary Beth Vaughn, Diane Collins, Margaret Rolfe, Margot Sturgeon, Sara Jane Vaughn, Patricia Wright, Sandra Westfall, Gayle Christen, Barbara Edwards. FOURTH ROW: Roberta Jesse, Susan Torreyson, Kay Aldrich, Linda Schramm, Karen Thompson, Priscilla Mow, Jody Rodgers, Billy Sue Robinson, Kathy Gibbons, Sally Anderson, Linda Everhart, Sherry Rice, Patty Miller, Neta Jennings.



## MIXED CHORUS

Buzzy Alton, Reyburn Silver, Diane Collins, Margaret Rolfe, Susan Lincoln, Linda Schram, Peggy Arndt, Jackie Simpson, Karen Thompson, Mary Beth Vaughn, Priscilla Mow, Jody Rogers, Sue Robinson, Kathy Gibbons, Margot Sturgeon, Sally Anderson, Rodney Dorr, Tim Fry, Barry Beckman, Gary Markwell, Gene Beasley, Bob Osborne, Dennis Long, Jed Claybrook, Mike Fry, Ron Griggs, Mike McLeod, Bob Hollander, Ron Johnson, Ray Engert, Jerry Daugherty, Clifford Selby, Elton Fay, Jim Beane, Bill Toalson, Charles Rice, John Miller, Mike White, Bill Snell, Bill Green.



## ENSEMBLE

Theresa Billings, Candy Fink, Sarah Jane Vaughn, Barbara Mortimer, Sandra Westfall, Patricia Wright.



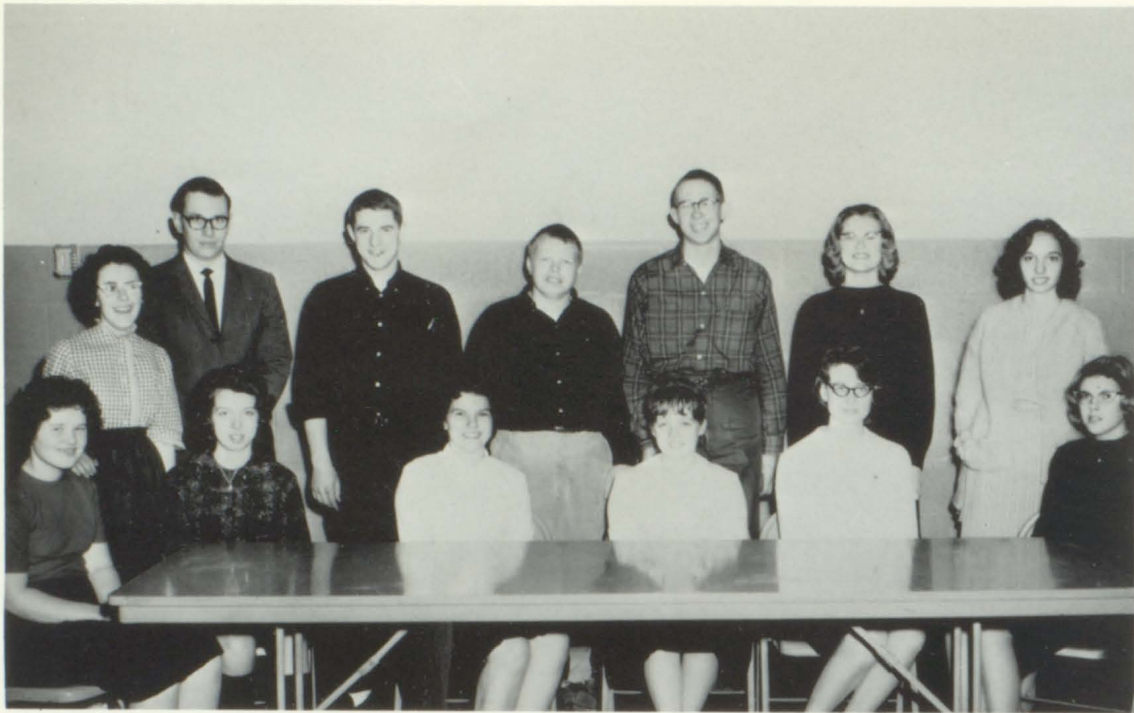
## HONOR SOCIETY

FRONT ROW: Lexanna Johnson, Virginia Young, Sandra Warren, Kathy Knowles, Betty Sears, Linda Everhart, Emily Baker, Sue Ellen Jones, Peggy Arndt, Sally Anderson, Anne Gaffin, Linda Berrey, Shirley Hayden. BACK ROW: Margaret Rolfe, Margot Sturgeon, Kenneth Randolph, Mrs. Bailey, Sponsor, Ronnie Johnson, Bill Toalson, Mrs. Joyce, Sponsor, Vickie Brooks, Barbara Heckman.



## STUDENT COUNCIL

Betty Sears, Barbara Ingram, Rex Bundy, Margot Sturgeon, Jim Beane, Mary Louise, Gamache, Bob Rogers, Mike Fry, Rick Wilson, Mr. Clark, Sponsor, Elaine Hansen, Don Peterson, Darla Collins, Wanda Miller.



## ANNUAL STAFF

STANDING: Mary Beth Vaughn, Photographer; Barbara Heckman, Business Manager; Vickie Brooks, Editor; Mrs. Leonard Houston, Sponsor. SEATED: Lera Armontrout, Linda Berrey, Shirley Hayden, Priscilla Mow, Sue Ellen Jones, Margaret Rexroat, Margot Sturgeon, Elaine Hansen, Karen Thompson, Margaret Rolfe.



## SCIENCE CLUB

SEATED: Dotty Dollens, Linda Jones, Becky Dollens, Iris Houston, Barbara Heckman, Margaret Rolfe. STANDING: Ann Offitt, Mr. Burk, Sponsor, Rex Bundy, Johnny Stein, Kenneth Randolph, Diane Collins, Emily Baker.



### NEWSPAPER STAFF

STANDING: Kathy Knowles, Margaret Rolfe, Betty Sears, Keith Davenport, Karen Thompson, Mary Beth Vaughn, Linda Berrey, Mr. Don Maddy, Sponsor, Vickie Brooks, Mrs. Leonard Houston, Sponsor. SEATED: Barbara Heckman, Sue Ellen Jones, Peggy Arndt.



### LIBRARY STAFF

Gayle Marshall, Linda Everhart, Mrs. Kerr, Emily Baker, Ray Engert.



### OFFICE GIRLS

Judy Riedel, Suzie Elliott, Betty Sears, Laura Hatfield, Sue Carol Hanna, Patty McDonald, Linda Sanders, Jeanette Brooks.







*ADVERTISERS*



Celeste Canell and Richard Bagley examine electrical testing equipment during a physics class tour of the Chance Research Center.

# CHANCE

*where the energy of research  
serves people*



SEE US FOR YOUR FARM FINANCING NEEDS

# FIRST NATIONAL BANK

of Centralia, Missouri

Complete Banking Service

Bank by Mail

Farm Loans

Personal Loans

C. C. C. and Auto Loans

Safe Deposit Boxes

Dial EMpire 2-2144

**LEWIS  
PLUMBING & HEATING**

Complete Repair and Service Work

204 W. Sneed

EMpire 2-2811

Centralia, Missouri

"When You Need a Plumber Bad--  
You Need Him Good"

**YOUNG & WILLS  
FEED STORE**

Feed  
Fertilizer

Seed  
Farm Supplies

supplying

MOBILE GRINDER--MIXER

EMpire 2-3513 Centralia, Missouri

SKyline 7-1714 Sturgeon, Missouri



The Family Store

**WESTERN AUTO ASSOCIATE  
STORE**



EMpire 2-2514

119 North Allen St.

Centralia, Missouri

**GREEN'S  
FLORIST SHOP & BAZAAR**

With

Flowers for All Occasions

109 North Allen St.

EMpire 2-2287

Centralia, Missouri

## **McMANAMA AND FARMER**

FURNITURE & FLOOR COVERING

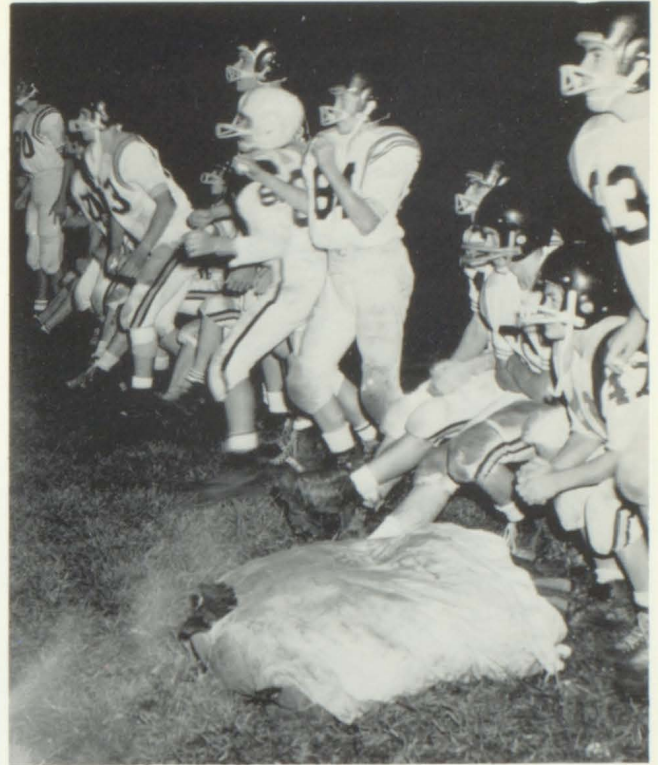
We try to stock at all times a well balanced line of Good Quality Furniture at reasonable prices.

Come in, visit all Four Floors, and see our Display of Fine Furniture, Floor Covering, and Bedding.

Your business is appreciated.

W. H. McMANAMA  
PAUL L. FARMER

Centralia, Missouri  
EMpire 2-2712



Compliments of a Friend of the Panthers.

# **GUARD PRINTING & PUBLISHING CO.**

FINE COMMERCIAL PRINTING

Letterpress - Offset

Four Color Process - Brochures

Mailing Pieces - General Printing

"Home of the Centralia Fireside Guard"

EMpire 2-2133

Compliments

**COX'S**

Men's and Boys'  
Clothing, Shoes and Furnishings

104 N. Allen St.  
Centralia, Missouri

**BEASLEY IMPLEMENT  
CO.**

SALES



SERVICE

You Need a Better Tractor.

Buy Allis-Chalmers "D"

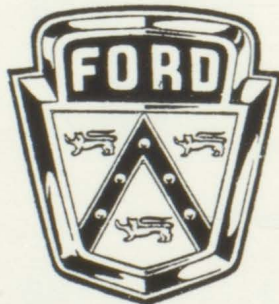
Centralia, Missouri  
EMpire 2-3815

**LEWIS-ADAMS FORD**

Authorized Sales and Service

Parts - Body Work

Wrecker Service



Centralia, Missouri  
EMpire 2-3317

Congratulations, Class of 1964

**STERRETT JEWELERS**

finest in

Diamonds - Watches - Gift Items

## BALLEW FUNERAL HOMES

Complete Funeral Service

24-Hour Ambulance Service

PAUL Q. BALLEW  
Registered Mortician

EMpire 2-2169  
Centralia, Missouri

SKyline 7-1910  
Sturgeon, Missouri

CONGRATULATIONS

to the Class  
of 1964

**GOFF'S  
SUPER-  
MARKET**



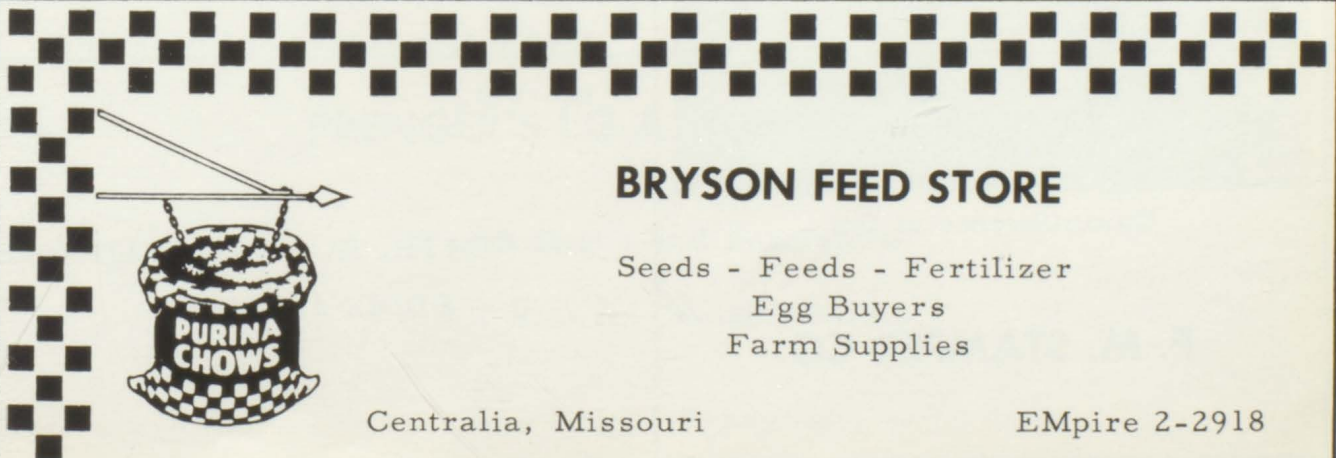
Compliments of MRS. LORRAINE MEREDITH

## MELODY BEAUTY SALON

Centralia, Missouri

120 N. Allen

EMpire 2-3612



## BRYSON FEED STORE

Seeds - Feeds - Fertilizer  
Egg Buyers  
Farm Supplies

Centralia, Missouri

EMpire 2-2918

## BOWL-A-WAY LANES

Member

BPAA

Member

MJBC

YBA



Stop in and Bowl Anytime

Centralia, Missouri EMpire 2-2688

## EAST SIDE AUTO SERVICE

General Auto Repairing

Clean Used Car Sales

Centralia, Missouri

EMpire 2-2319



Compliments of the

**F. M. STAMPER CO.**

## CENTRALIA BARBER SHOP

There's nothing like a haircut by our master barbers to improve a man's appearance and boost his morale.

JIM KEATH, HOWARD SMITH and  
EDDIE ASHMEAD



## EARL FORREST

SINCLAIR



SERVICE

Washing - Lubrication

Goodyear Tires

Full Time Mechanic

Used Cars Bought and Sold

We Give S & H Green Stamps

N. Allen - Centralia EMpire 2-3211

## ELECTRICAL CONTRACTORS

ELECTRICAL

CONTRACTORS

Residential

Commercial

Industrial

House Wiring and Repairing

Small Appliance Repair

## STIDHAM ELECTRIC SERVICE

334 E. Lakeview

EMpire 2-3437

Congratulations and Very Best Wishes

to the

1964 Graduating Seniors of Centralia High School

SAM SNEED

## SAMMY'S TOBACCO STORE

EMpire 2-3019

## PRENGER'S I.G.A. SUPER MARKET

Fresh Fruits and Vegetables

U. S. D. A. Choice Meats

Low Prices Every Day

## BOOSTERS

Dr. P. O. Baker  
Ben Franklin Store  
Bob's Champlain Station  
C. & C. Standard Station  
Centralia Derby  
Dr. and Mrs. Focht and Randy  
Dr. Greer

Home Oil Co.  
Hulen's Jewelry  
Leon's Garage  
Ollie's Shell Station  
Palmer and Ellis  
Squire's Cafe  
Wilson Drug Co.



## SOUTHSIDE GROCERY

### CENTRAL CUT RATE DRUG CO.

Fountain Service

Drugs

Cosmetics

Candies

107 North Allen

EMpire 2-2152

Everything for Farm or Home

### MELSON HARDWARE & APPLIANCES

URE GAS

Admiral

Norge

Lawn Boy Mowers

EMpire 2-2313



**M.F.A. CENTRAL CO-OP**



**MARGARET'S DRESS SHOP**



**LaCROSSE LUMBER COMPANY**



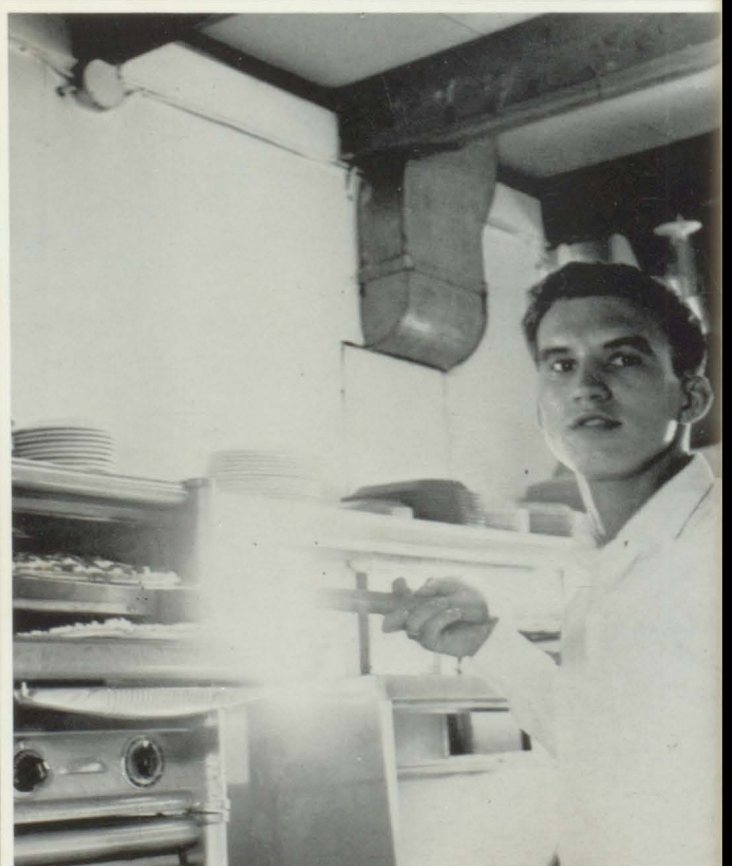
**ALBERT A. WOOD INSURANCE**



**THOMAS LUMBER COMPANY**



**CRIGLER GULF SERVICE**



**TONANZIO'S**

