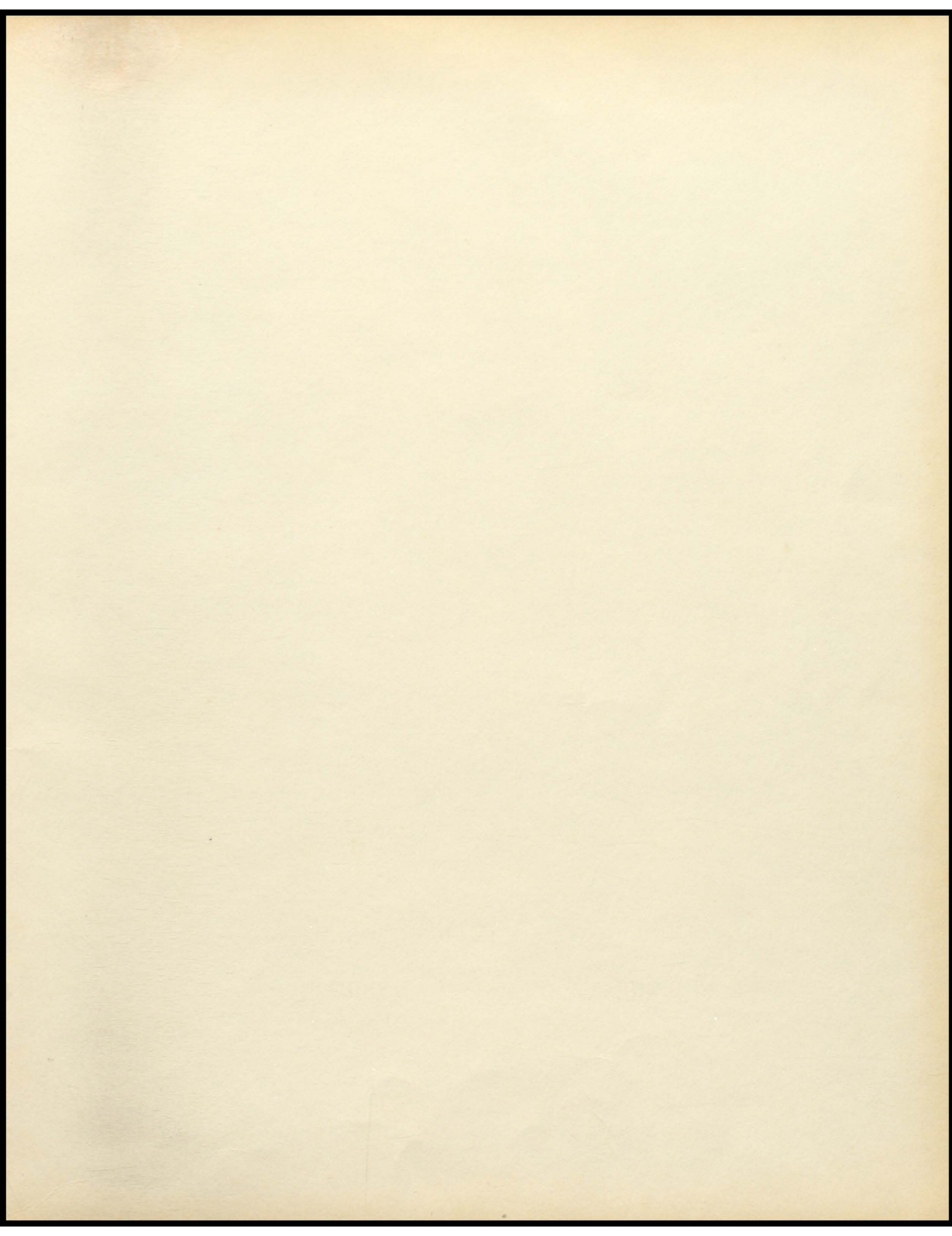
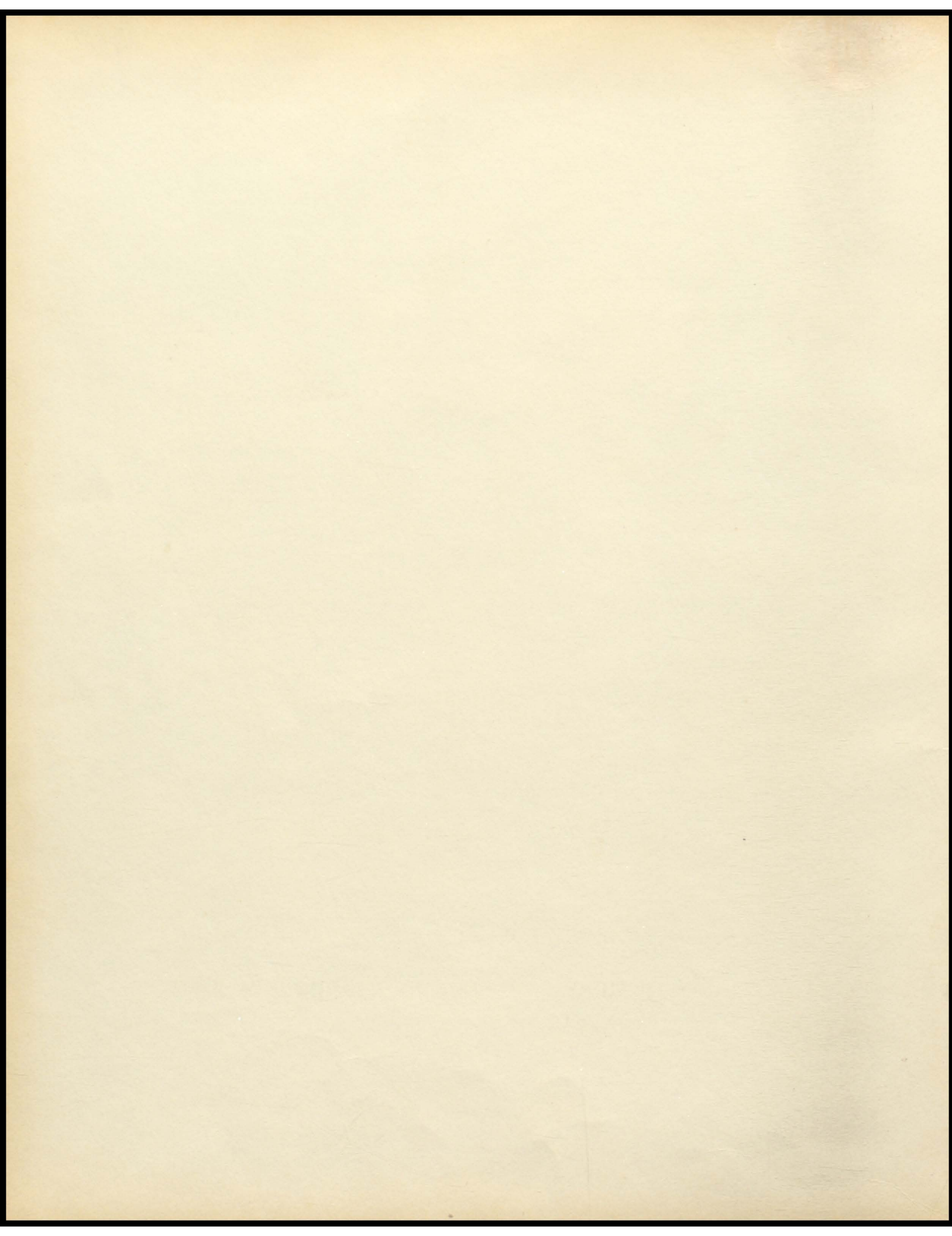


HELIOSTAT

1957







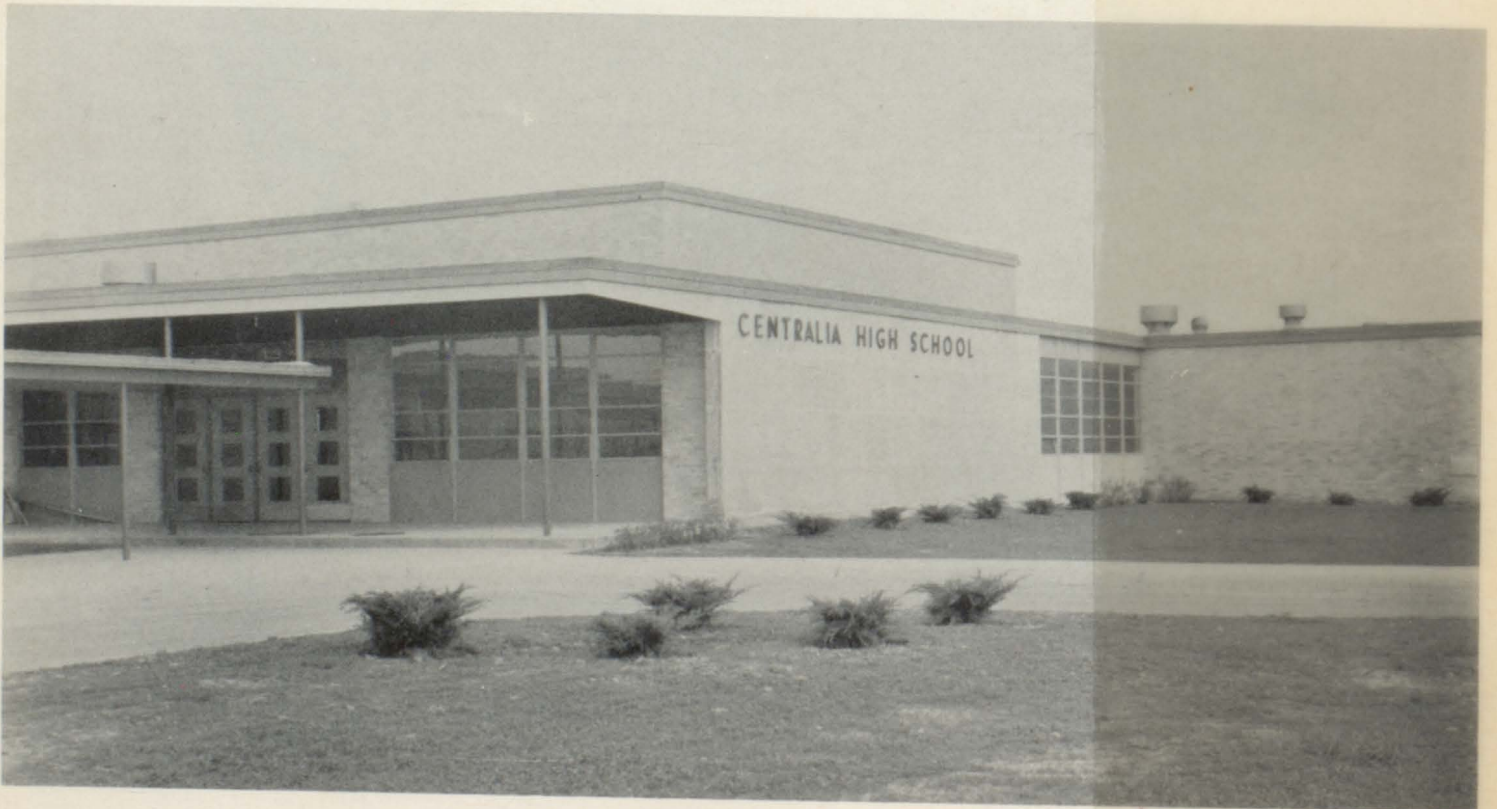


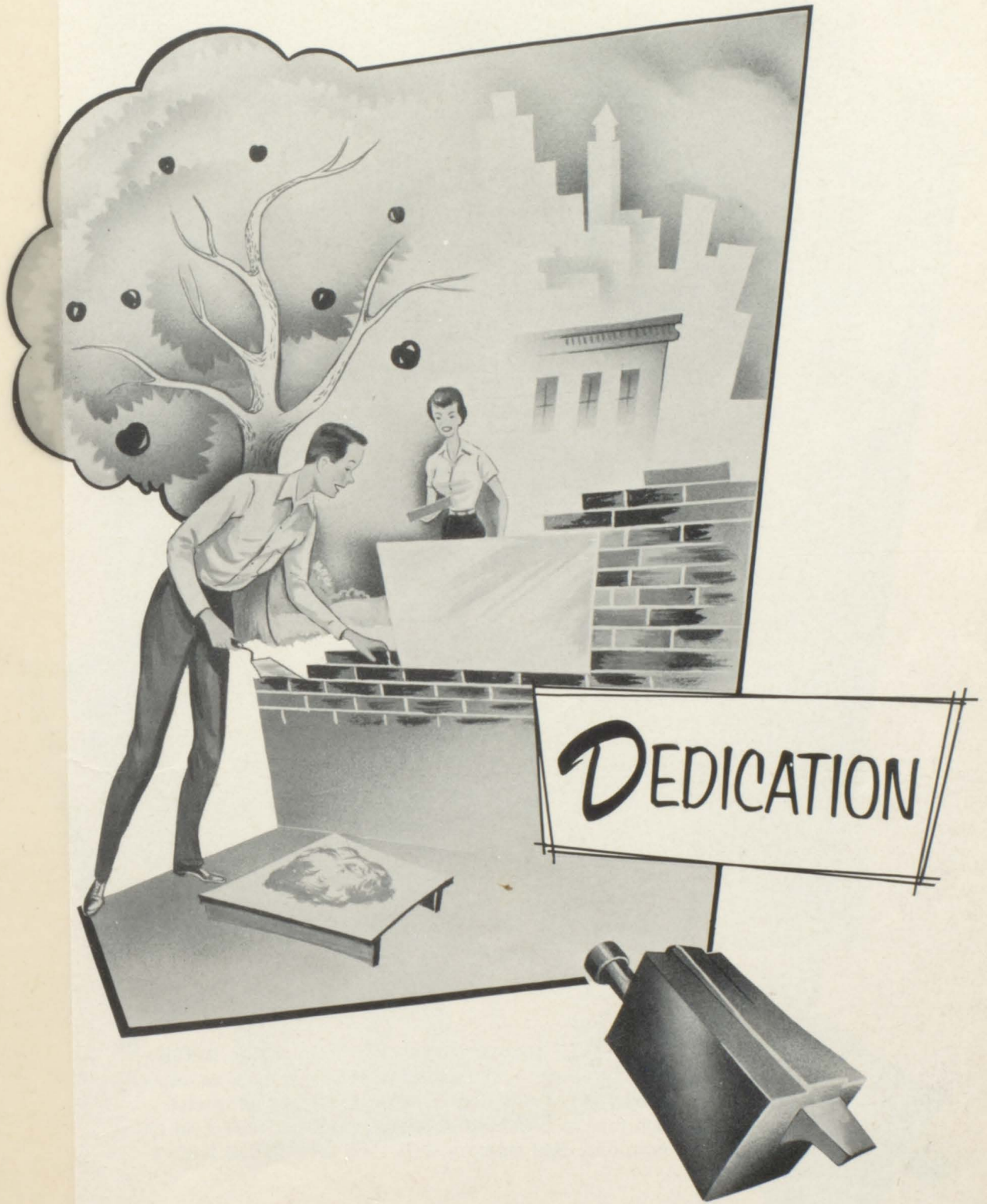
CENTRALIA HIGH

Centralia, Missouri

HELIOSTAT

Sidney Hubbard, Editor







We, the Seniors of 1957, dedicate this year's Heliosiat to the memory of John M. Gibbons. The student body joins us in paying tribute to his unfailing devotion in furthering our Musical Education program and in creating a spirit of student fellowship throughout the school. His memory will long live in our hearts and minds.

Sponsored By  
A. B. CHANCE CO.







Mr. Clarence W. Mackey, Superintendent and Mrs. Roscoe Kinkead, Secretary.



### Faculty

FIRST ROW: Left To Right; Mr. Raymond Walsh, Industrial Arts and Drivers Training; Mrs. Edith Kerr, Librarian and Latin; Mrs. Shirley Lewis, Junior High and General Math; Mrs. Norma Grove, Home Economics; Mrs. Joan Renie, English 1 & 11 and Speech; Mrs. Eutopia Bailey, Junior and Senior English and Geography; Mrs. L. R. Houston, Commerce; Mr. C. W. Mackey, Superintendent; Mr. A. H. Kerr, Principal. SECOND ROW: Mrs. Irene Neale, Junior High; Mrs. Lavinia Asbury, Junior High Principal. THIRD ROW: Mr. John Adkins, Coach and Physical Education; Mr. Kenneth Lewis, Vocational Agriculture; Mr. John Brubaker, Social Studies; Mr. Harold Kottman, Assistant Coach and Junior High; Mr. V. J. Olson, Mathematics; Mr. Tuel Cole, Science. NOT PICTURED: Mrs. Frances Olson, Vocal Music; John M. Gibbons, Band Director.

Sponsored By  
SAMES-HIGGINS INSURANCE AGENCY



### School Board

Mr. Davenport, Mr. Mackey, Mr. Hough, Dr. Greer, Mr. Miller, Mr. Hulen, Mr. March, Mr. Williams.

sponsored by  
SOUTHSIDE GROCERY AND PALMER & ELLIS

# 1957 Annual Staff



Sherry Wilson . . . . . Typist  
 Lynn Overton . . . . . Assistant Editor  
 Jacquie Curtright . . . . . Assistant Business Manager  
 Mrs. Leonard Houston . . . . . Sponsor  
 Sidney Hubbard . . . . . Editor  
 Dorothy McGlamery . . . . . Business Manager  
 Butch Spry . . . . . Cameraman





SIDNEY LEE HUBBARD

Valedictorian



CARYL ANN ABENDSHIEN

Salutatorian

## Class History

When the fall of 1953 came, we boarded the Streamliner, San Quan, at Centralia High School as Freshmen with high hopes of it being one of the most outstanding classes in the history of Centralia. Elected for the Engineer was Dorothy McGlamery; Assistant Engineer, Richard Crigler and Lois Harlow served both as Brakeman and Fireman. Mrs. Grove, Mr. Whitman and Mr. Brubaker served as Conductors. Caryl Abendshien joined our group at the beginning of the year and Barbara Schneller joined later; Margi Ball left our class.

Near the end of football season and for the Homecoming game, Sherry Wilson was chosen as an attendant. Before Christmas, Lois Harlow was chosen by the FFA boys to be Barnwarming Queen.

In the spring came the Beauty Pageant with Sidney Hubbard being crowned as Miss Centralia and Jacquie Curtright, Miss Eyes, which made our class proud to have among us a Miss Centralia during our Freshman year. After that everyone seemed to get a touch of spring fever and a longing for school to be out with no one knowing exactly what they were going to do when it was out, except enjoy themselves. Swimming, parties and picnics made the summer go faster than it really did, before the final party took place it was time once again to board the San Quan for our Sophomore year.

Ronald Ball was chosen as Engineer and Rosy Decker as Assistant Engineer. Dorothy Atterberry joined our class and was elected to serve both as Brakeman and Fireman. Mr. Brubaker and Coach Adkins were the Conductors. Kenny Joe Palmer, Harold Coureton and John Brown left our group. Harold Coureton went to work at Chance's. Again this year Sherry Wilson was chosen as Homecoming Attendant. In the Hope Medal contest we had two winners, Lynn Overton won 1st and Sandra (Mortimer) Eckley won 2nd.

Dorothy Atterberry was chosen as Barnwarming Queen at the Dance given by the FFA boys. In the spring Caryl Abendshien made the Sophomore Pilgrimage.

At the Beauty Pageant Dorothy McGlamery was chosen to reign for a year as Miss Centralia.

Memorial of this year goes to John Brown, who drowned while swimming in a pond. He was to have been a starter on the football team in the fall.

The beginning of the Junior year was a little sad because we had lost a friend and classmate in John Brown. Our sadness wore off when we began planning all the things we were going to do during the year. It began with the election of Caryl Abendshien as Engineer; Tommy Coureton, Assistant Engineer, Sidney Hubbard as Brakeman and Alfred Powell as Fireman. Again this year Mr. Brubaker served as Conductor with the assistance of Mrs. Houston, Mr. Lewis and Mr. Cole.

In the Hope Medal contest we had two contestants, Sidney Hubbard winning 2nd and Ronald Ball. Sherry Wilson was elected as Homecoming Attendant.

Dorothy McGlamery and Caryl Abendshien attended Girls' State with Judy Hillman and Barbara Eckley serving as Alternate, Dorothy served as an officer. Butch Spry attended Boys' State and Richard Crigler served as Alternate.

At the Beauty Pageant we had three winners - Ruthanne Pratt, Miss Hair; Sherry Wilson, Miss Smile; Jacquie Curtright, Miss Poise.

The highlight of the year was in the spring at the Junior-Senior Prom with an underwater scene and food to represent things of the sea, even to the color of it.

After that no major event took place for us until the end of school when we left the San Quan, most of us with the hope of obtaining a job until the fall when we would once again board the San Quan for the final time.

Memorial of this year goes to Gilbert Jesse, who died in a car wreck while on the way back from Columbia to Sturgeon.

When we boarded the San Quan for our Senior year, we thought ahead to the time when we would get our diplomas in the spring.

Elected for Engineer was Tommie Coureton; Kathleen Carter, Assistant Engineer; Shirley Carr, Brakeman and Jerry Truby, Fireman. Mr. and Mrs. A. H. Kerr, Mrs. Renie, and Mr. Brubaker were Conductors. Joyce Maberry and Jo Ann Wilkerson joined our class in the fall but left by mid-semester. Pat Mosby joined our class at mid-semester. Lois Harlow left at Christmas.

For the Homecoming Game we had several participants-Sidney Hubbard and Dorothy McGlamery as attendants to the Queen; Roy Barnes as Homecoming King; and the senior float entered in the parade with the theme of Dial V for Victory won second place.

At the Hope Medal Contest, Kay Miller represented the senior class.

At the Beauty Pageant, Sherry Wilson was crowned Miss Centralia and Jacquie Curtright, Miss Stature.

Jerry Truby and Caryl Abendshien were chosen to be Helio-stat King and Queen.

The Senior Play, "Junior Miss", was presented by several members of the class. Kay Miller and Sidney Hubbard had the leading roles and all Speech class had a part in it, either as character or behind the stage. Mrs. Renie was director and in charge of the play.

Shirley Wilkerson is a member of our group who has taken rheumatic fever and is temporarily out of school.

The Senior Trip was taken on May 20, 1957 to Bagnell Dam and State Park, Missouri and everyone had a marvelous time.

The valedictorian was Sidney Hubbard and salutatorian was Caryl Abendshien. Also at Commencement, Donald Jennings was recognized as having had perfect attendance and no tardiness for the twelve years of his school life.

That ends our trip on the San Quan. See you all in the years to come at the annual Alumni Dance!

Recorded by, Betty Mason

Sponsored By

DR. P. O. BAKER AND GULF SERVICE STATION



DOROTHY McGLAMERY

F. H. A. . . . . 1,2,3,4  
 Class Officer . . . . . 1  
 Pep Club . . . . . 1,2,3,4  
 Cheerleader . . . . . 2,3,4  
 Band . . . . . 1,2,3,4  
 Majorette . . . . . 2,3,4  
 Senior Play . . . . . 4  
 Miss Centralia . . . . . 1955  
 Beauty Pageant . . . . . 1,2  
 Girls' State . . . . . 3  
 Homecoming Attendant . . . . 4

SIDNEY HUBBARD

F. H. A. . . . . 1,2,3,4  
 Class Officer . . . . . 3  
 Pep Club . . . . . 1,2,3,4  
 Cheerleader . . . . . 1,2,3,4  
 Band . . . . . 1,2,3,4  
 Majorette . . . . . 2,3,4  
 Hope Medal, Second Place . 3  
 Ag. Plays . . . . . 2  
 Miss Centralia . . . . . 1954  
 Senior Play . . . . . 4  
 Homecoming Attendant . . . . 4



LYNN OVERTON

Track . . . . . 1,2,3,4  
 Boys' State . . . . . 3  
 Band . . . . . 1,2,3,4  
 Hope Medal . . . . . 2  
 "C" Club . . . . . 1,2,3,4  
 Voice . . . . . 2,3,4  
 Senior Play . . . . . 4

JAMES WM. SPRY

Boys' State . . . . . 3  
 Football . . . . . 1,2,3,4  
 Basketball . . . . . 1,2,3,4  
 Track . . . . . 1,2,3,4  
 Senior Play . . . . . 4  
 "C" Club . . . . . 1,2,3,4



SHERRY WILSON

Pep Club . . . . . 1,2,3,4  
 Cheerleader . . . . . 1,2,3,4  
 Band . . . . . 2,3,4  
 Majorette . . . . . 2,3,4  
 Homecoming Attendant . 1,2,3  
 Beauty Pageant . . . . 1,2,3,4  
 Miss Smiles . . . . . 3  
 Miss Centralia . . . . . 1957

JACQUIE CURTRIGHT

F. H. A. . . . . 1,2,3,4  
 Pep Club . . . . . 1,2,3,4  
 Cheerleader . . . . . 3,4  
 Band . . . . . 1,2,3,4  
 Glee Club . . . . . 2  
 Majorette . . . . . 2,3,4  
 Hope Medal . . . . . 2  
 Ag. Plays . . . . .  
 Beauty Pageant . . . . 1,2,3,4  
 Miss Eyes . . . . . 1  
 Miss Poise . . . . . 3  
 Miss Stature . . . . . 4



Sponsored By  
 FIRST NATIONAL BANK  
 Centralia, Missouri



RUTHANNE PRATT

F. F. A. . . . . 1,2,3,4  
Pep Club . . . . . 1,2,3,4  
Beauty Pageant . . . . . 1,2,3  
Miss Beautiful Hair . . . . . 3  
Glee Club . . . . . 1,2,3,4

PATTY HUGHES

F. H. A. . . . . 1,2,3,4  
Pep Club . . . . . 1,2,3,4  
Senior Play . . . . . 4  
Beauty Pageant . . . . . 2,3,4  
Glee Club . . . . . 1,2,3,4



KATHERINE E. MILLER

F. H. A. . . . . 1,2,3,4  
Pep Club . . . . . 1,2,3,4  
Cheerleader . . . . . 3,4  
Band . . . . . 1,2,3  
Majorette . . . . . 2,3  
Ensembles . . . . . 2,3,4  
Hope Medal . . . . . 4  
Senior Play . . . . . 4  
Ag Plays . . . . . 1  
Beauty Pageant . . . . . 1,2,3,4  
Glee Club . . . . . 2,3,4

DOROTHY ATTERBERRY

F. H. A. . . . . 1,2,3,4  
Class Officer . . . . . 1,2  
Pep Club . . . . . 3,4  
Beauty Pageant . . . . . 2,3,4

RICHARD CRIGLER

Class Officer . . . . . 1,2  
Football . . . . . 1  
Basketball . . . . . 1  
Track . . . . . 1  
Band . . . . . 1,2,3,4

BEN DAILING

F. F. A. . . . . 2,3,4  
Track . . . . . 2,3,4  
"C" Club . . . . . 2,3,4  
Senior Play . . . . . 4



GARLAND WYATT

F. F. A. . . . . 1,2,3  
Senior Play . . . . . 4

BILLY McCUBBIN

F. F. A. . . . . 2  
Track . . . . . 1  
"C" Club . . . . . 1







JUDY HILLMAN  
 Girls' State, Alternate . . . 3  
 Mixed Chorus . . . . . 1  
 Ensembles . . . . . 1,2,3,4  
 Voice . . . . . 1,2,3,4  
 Beauty Pageant . . . . . 4  
 Glee Club . . . . . 1,2,3,4  
 Hope Medal, Alternate . . . 2

THERESA WALSTEAD  
 Glee Club . . . . . 1,2,3  
 F. H. A. . . . . . 2,3



VERNON YAGER  
 F. F. A. . . . . 1,2,3,4

SHIRLEY CARR  
 F. H. A. . . . . 2,3,4  
 Class Officer . . . . . 4  
 Pep Club . . . . . 1,2,3  
 Glee Club . . . . . 1,2,3,4  
 Ensembles . . . . . 4

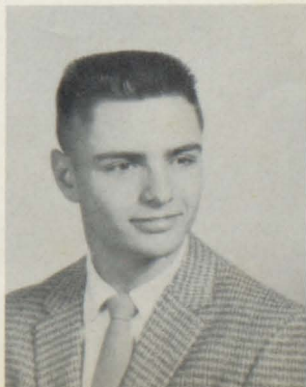
JOHN ZARING

KATHLEEN CARTER  
 F. H. A. . . . . 3,4  
 Class Officer . . . . . 4  
 Pep Club . . . . . 1,2,3,4



JERRY MAYES  
 F. F. A. . . . . 3,4  
 Football . . . . . 1,2,3,4  
 Basketball . . . . . 1  
 Track . . . . . 1,2,3,4  
 "C" Club . . . . . 1,2,3,4  
 Senior Play . . . . . 4  
 Band . . . . . 1,2

RONALD BALL  
 F. F. A. . . . . 1,2,3,4  
 Class Officer . . . . . 2  
 Football . . . . . 3,4  
 Track . . . . . 3,4  
 "C" Club . . . . . 3,4  
 Hope Medal . . . . . 3  
 Senior Play . . . . . 4





BOB DAVIDSON  
 Football . . . . . 1  
 Basketball . . . . . 1,2  
 Track . . . . . 1,2,3  
 "C" Club . . . . . 1,2,3

JOHN SANDERS



WESLEY PULIS  
 F. F. A. . . . . 1,2,3  
 Senior Play . . . . . 4

LEO SMOOT, JR.  
 F. F. A. . . . . 1,2,3,4

JOHN RIECHERS  
 Football . . . . . 3  
 "C" Club . . . . . 3

PATRICIA MOSBY  
 F. H. A. . . . . 1,2,3  
 Mixed Chorus . . . . . 3  
 Glee Club . . . . . 4



BETTY MASON  
 F. H. A. . . . . 2,3,4

JEAN O'BRIEN  
 F. H. A. . . . . 1,2,3,4





BARBARA TRUSSELL

F. H. A. . . . . 1,2,3,4  
Pep Club . . . . . 1,2,3,4  
Cheerleader . . . . . 3  
Beauty Pageant . . . . . 1,2,4

BARBARA ECKLEY

F. H. A. . . . . 1,2,3,4  
Girls' State, Alternate  
Pep Club . . . . . 3,4  
Glee Club . . . . . 1,2,3,4  
Beauty Pageant . . . . . 3,4



TOMMIE COURETON

F. F. A. . . . . 1,2,3  
Class Officer . . . . . 3,4  
Track . . . . . 1,2,3,4  
"C" Club . . . . . 1,2,3,4  
Senior Play . . . . . 4  
Football . . . . . 1,2,3,4

LANNIE PATTON

Football . . . . . 1,4  
Basketball . . . . . 1,2,3  
"C" Club . . . . . 1,2,3,4

NADENE WEIBEL

F. H. A. . . . . 3,4  
Pep Club . . . . . 1  
Glee Club . . . . . 2,3

BULA MATHEWS

Beauty Pageant . . . . . 4  
F. H. A. . . . . 3,4  
Pep Club . . . . . 4



ROY BARNES

Football . . . . . 1,2,3,4  
Basketball . . . . . 1,2,3,4  
Track . . . . . 1,2,3,4  
"C" Club . . . . . 1,2,3,4  
Senior Play . . . . . 4

EDDIE REDINGTON

Senior Play . . . . . 4





ALFRED POWELL  
 Football . . . . . 2,4  
 Student Manager . . . . . 3  
 Track . . . . . 1,2,3  
 Band . . . . . 1,2,3  
 Hope Medal . . . . . 1  
 "C" Club . . . . . 1,2,3,4  
 Senior Play . . . . . 4

BARBARA SCHNELLER  
 F. H. A. . . . . 3,4  
 Beauty Pageant . . . . . 4



ROSALEE DECKER  
 F. H. A. . . . . 1,2,3,4  
 Pep Club . . . . . 1,2,3,4  
 Beauty Pageant . . . . . 1,2,4

DONALD JENNINGS

JANICE SECRIST  
 Band . . . . . 1,2  
 Senior Play . . . . . 4  
 Beauty Pageant . . . 1,2,3,4

RONNIE PEMBERTON  
 F. F. A. . . . . 1,2,3,4  
 Football . . . . . 1,2,3,4  
 Track . . . . . 1,2,3  
 "C" Club . . . . . 1,2,3,4



JEROME LANE TRUBY  
 Class Officer . . . . . 4  
 Track . . . . . 2,3  
 "C" Club . . . . . 2,3

CARYL ABENDSHIEN  
 F. H. A. . . . . 2,3,4  
 Class Officer . . . . . 3  
 Girls' State . . . . . 3  
 Ensembles . . . . . 2,3  
 Beauty Pageant . . . . 1,2,3





**UNDERGRADS**



## JUNIOR CLASS

SEATED: Left To Right; Areta England, Sharon Jennings, Barbara Adkisson, Delores Botkin. FIRST ROW: Jean Reeves, Betty Williams, Carol Bonaparte, Odessa Bonaparte, Jean Burks, Anna Gibson, Mary Ellen Patton, Barbara Mortimer, Joyce Smith, Virginia Dollens, Harold Coureton, Clarence McCowan, Bill Forrest, Larry Burson, Mickey Mika. SECOND ROW: Neal Hartman, Janet Bonney, Mary Ruth Groves, Virginia Stanford, Beverly Decker, Mary Ann Stephens, Joyce Peck, Wanda Jones, Ann Thurston, Carol Smith, Beverly Miller, Rosalie Walstead, Janice Curry, Rosemary Angell, Elmo Reams, Gordon Ferguson, John Allen Williams. THIRD ROW: Keith Davis, John Trumble, Allan Zaring, Don Bowman, Bill Bagley, Allen Harper, Eddie Gladney, Gary Stowers, Larry Megown, Tom Travis, Bob Jerman, Eddie Owings, Henry Ellis, Miller Owings, Eddie Roth, William Musser. NOT PICTURED: John Bowers, Jack Davenport, Howard Jackson, Roy Kable, Ray Kable, Bud Johnston, Anna Woolfolk.

Sponsored By

AL & KEN'S ZEPHYR STATION AND HOME OIL COMPANY



## SOPHOMORE CLASS

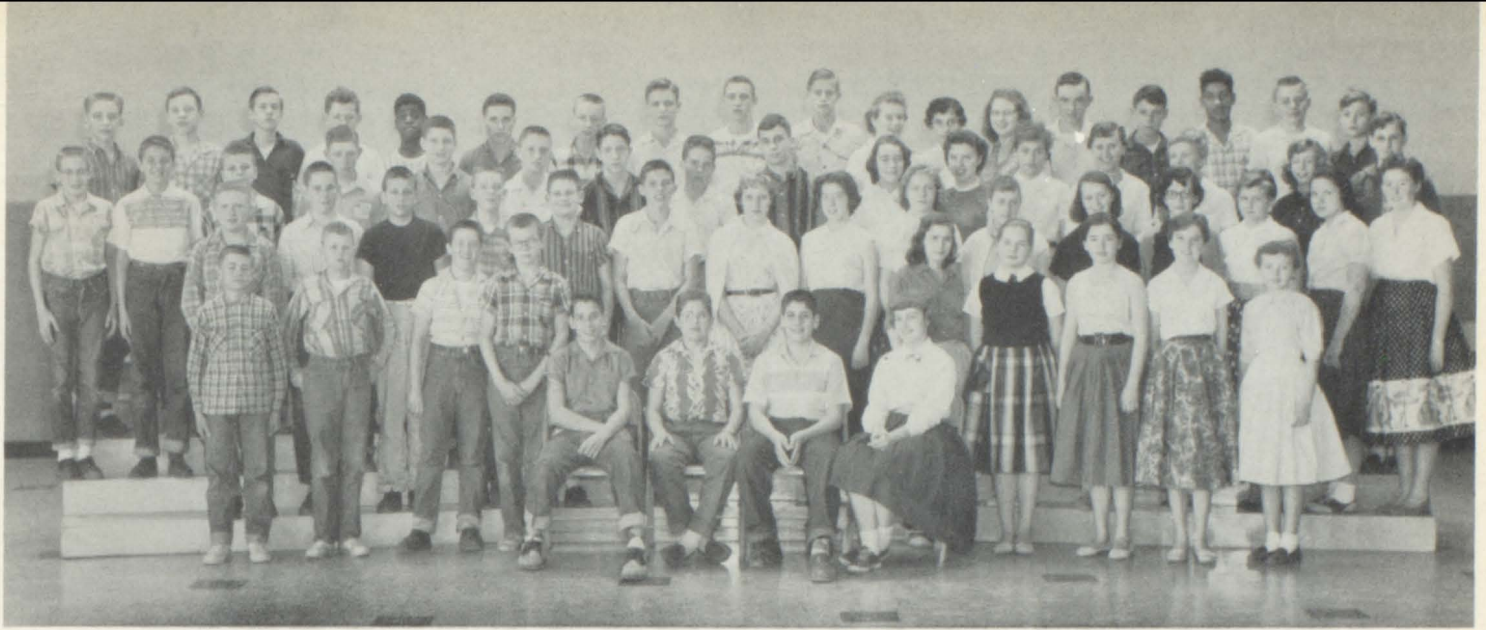
OFFICERS: Left To Right; Terry Mansfield, Marilyn Berry, Glenn Harrison, Ronnie Cirgler. FIRST ROW: Ruth Hartgrove, Brenda Bise, Ana Given, Delores Anderson, Kathy Atkinson, Virginia McCubbin, Mary Lou Jones, Sharon Ogle, Donna Colvin. SECOND ROW: Martha Mika, Pat Beasley, Lillian Salmons, Karen Smith, Judy Hough, Judy Martin, Ann Donnohue, Judy Bowman, Billie Eaton, Joanne Dettler, Carolyn Beamer, Judy Goe, Karen Marshall, Isabelle Dailing, Ruby Ellis, Delmyra Durham, Bonny Wilkerson, Janet Fulton. THIRD ROW: Allen Potts, Carl Jackson, Wyvetta Ball, Mary Dudley, Brenda Cox, Mary Fadler, Carolyn Carr, Kay McDonald, Mark Kay Bebermeyer, Judi Bevard, Gayle Williams, Marsha McDonald, Shirley Kilbourn, Sue Sims, Larry Beasley, John Rexroat. FOURTH ROW: Donnie Decker, David Drew, Howard Smoot, Pete Brown, Wendell Wright, Donald Isgrig, Gerald Secrist, Edwin Hibbs, Herbert Baker, Buddy Adkisson, Jerry Burson, Bill Chase, Gene Harlow, Jonny Stone, Bob Miller, Gary White, Johnny Cottrill, J. R. Yager, Jerry Dubes, Kenny Cox, R. P. Yager. NOT PICTURED: Norman Davidson, Mary Femmer, Alvin Pemberton, Orville Stone, Mildred Nowlin,



## FRESHMAN CLASS

OFFICERS: Left To Right; Sandra Gibbons, Nancy Saladin, Etta Sue Drew. FIRST ROW: Doris Gibson, Thelma Williams, Gayle Houston, Delores Burson, Ruthanne Haverstick, Helen Dickerson, Sandra Burson, Virginia Frazier, Sharon Musser, Carolyn Townsend, David Fadler, Howard Wills, Jerry Boulware, Tommy Forsee, Jerry Cotton, Gary Long, Roy Donaldson, Donnie Bagley, Gary Hoffman, Jerry Travis, Richard McCubbin. SECOND ROW: Linda Marshall, Alice Williams, Phyliss Schneller, Judy Wyatt, Linda Davenport, Barbara Kotowicz, Joseph Winterbower, Thomas Patton, Lee Roy Sexton, James Mason, Russell Polston, Kenneth Swanson, Harold Rawlings, Tommy Beasley, Richard Baldwin, Daryl Ball, Kenneth Oliver, Charles Munford. THIRD ROW: Norma McBride, Doris Bonaparte, Lorene Alexander, Mary Ann Hockman, Elizabeth Groves, Mary Ellen Cramner, John Wheeler, Eldon Harper, David Dollens, Duane Mathews, Larry Atterberry, Larry Reeves, Craig Curtright, John Mow, Friend Overton, Bill Wisdom, Lyle Triebwasser, George Cox. NOT PICTURED: Ralph Hutchens, Harold Reams.





### 8th Grade

SEATED: Left To Right; Bob Abendshien, Artie Decker, Gary Rowlen, Jane Martin. FIRST ROW: Marion Hayden, Jimmie Branham, Raymond Dawson, Arnold Peterson, Linda Mason, Linda Wheeler, Kathy McMahon, Diann Schindler, Phyllis Mackey. SECOND ROW: Larry Quisenberry, Jerry Vanskike, Johnny Wilson, Bob Hansen, Mac Gibbons, Bobbie Decker, Judy Palmer, Ruth Baldwin, Rita Wheeling, Jane Zaring, Betty Pigg, Nancy Woolfolk, Marylin MacKenzie, Barbara Eaton, Phyllis Reams. THIRD ROW: Mike Curtright, Paul Lachance, Dickie Thompson, Donald Hopper, J. D. Jones, Charles Adams, Phil Smith, Jerry Kester, David Campbell, Georgia Tuttle, Penny Fink, Anna Wills, Mary Lee Liming, Kathryn McGlamery, Douine Mobbs, Vicki Boyd. FOURTH ROW: John Sydow, Scott Summerfield, Ronnie Clark, Glen Jesse, Donald Williams, Vernon Adkisson, Artie Davis, Bill Cook, Jim Chase, Billy Adkisson, Jeane Stanford, Barbara Miller, Caye Hartley, Robert Silvers, Lonnie Reeves, Henry Tucker, Howard Hockman, Marvin Rogers.



### 7th Grade

KNEELING: Left To Right; Richard Green, Jack Sturgeon, Billy Williams, Ronnie Pratt, Scott Miller, Kenneth Mason, Clarence Bradley. FIRST ROW: Burnice Williams, James Williams, Toni Peer, Sharon Bryson, Karen Stone, Helen Dailing, Patty McMahon, Paula Hartmann, Rosie Mobbs. SECOND ROW: Gary Rohr, Archie Alexander, Donald Davidson, Ronnie Harlow, Connie Smarr, Charlotte Herndon, Sharon Adams, Janet Boucher, Phillip March. THIRD ROW: Bobby West, David Kates, David Hollander, Larry Waddle, Carl Henderson, John Selby, Nelda Reeves, Dolly Groves, Barbara Jones, Mildred Rawlings, Bonnie Cook. FOURTH ROW: Larry Davenport, Tom Rowlen, Silas Bradley, Jerry Ferrell, Jack Alton, Cecile Lachance, Janet Roth, Susan Stone, Joan Flaughter, Raymond Palmer.

## Students and Teachers at Work



### American Problems



### American History



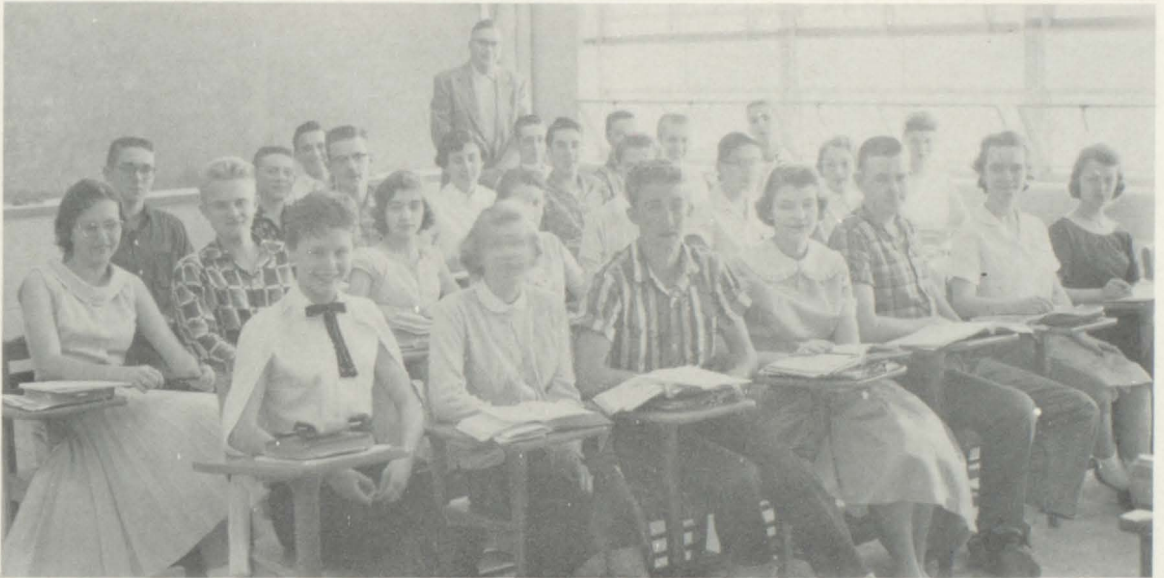
### Bookkeeping

Sponsored By

HENDERSON'S FURNITURE AND APPLIANCES AND GOFF'S FOOD STORE



**English II**



**Algebra I**



**English IV**

Sponsored By  
HINSHAW & ROBERTS AND OLLIE'S SHELL SERVICE



**General Science**

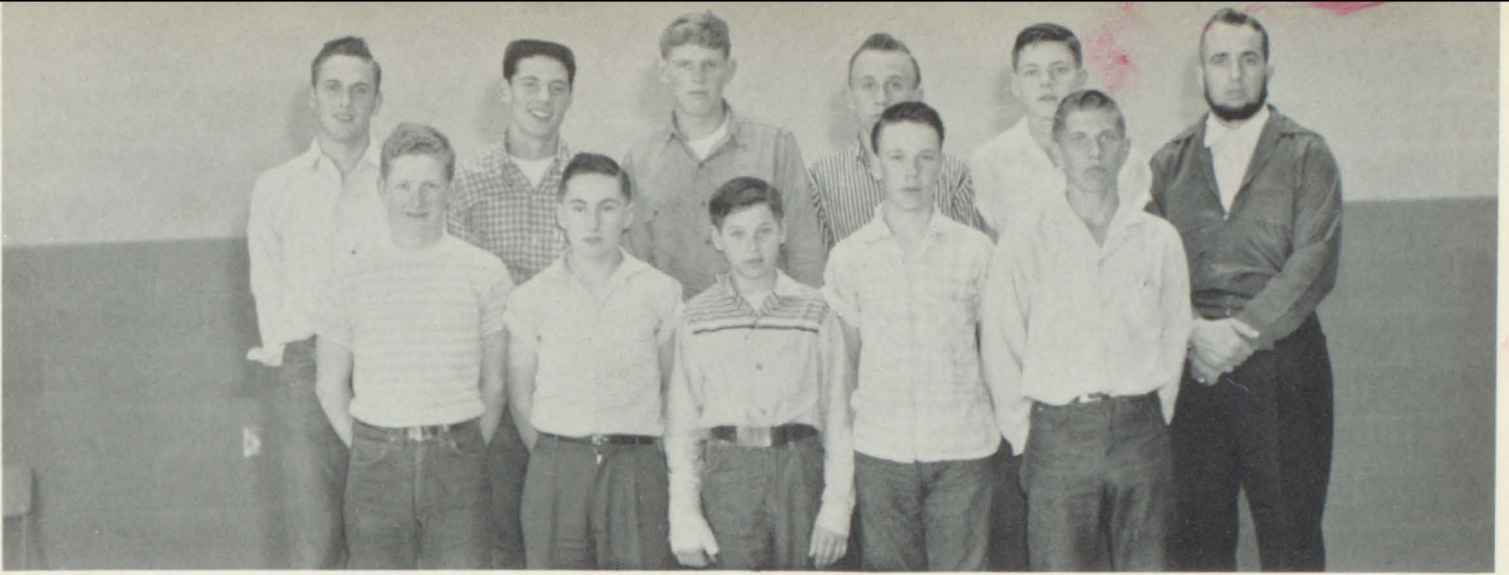


**Home Economics II**



**Latin I**

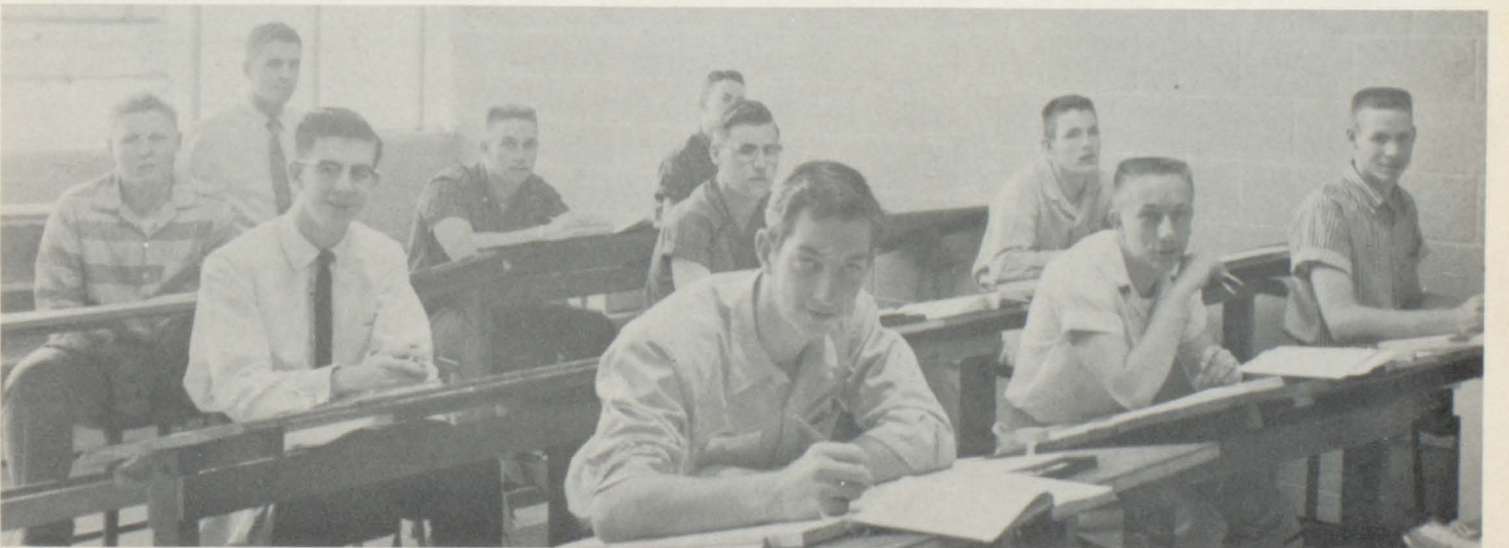
Sponsored By  
VISTA THEATRE AND BE-BE DRIVE-IN



**Agriculture I**



**Library Staff**



**Mechanical Drawing**

Sponsored By  
NARRAGANSETT GYM CO.

# 1957 Band Uniform -- J. R. Yager



## C. H. S. Band

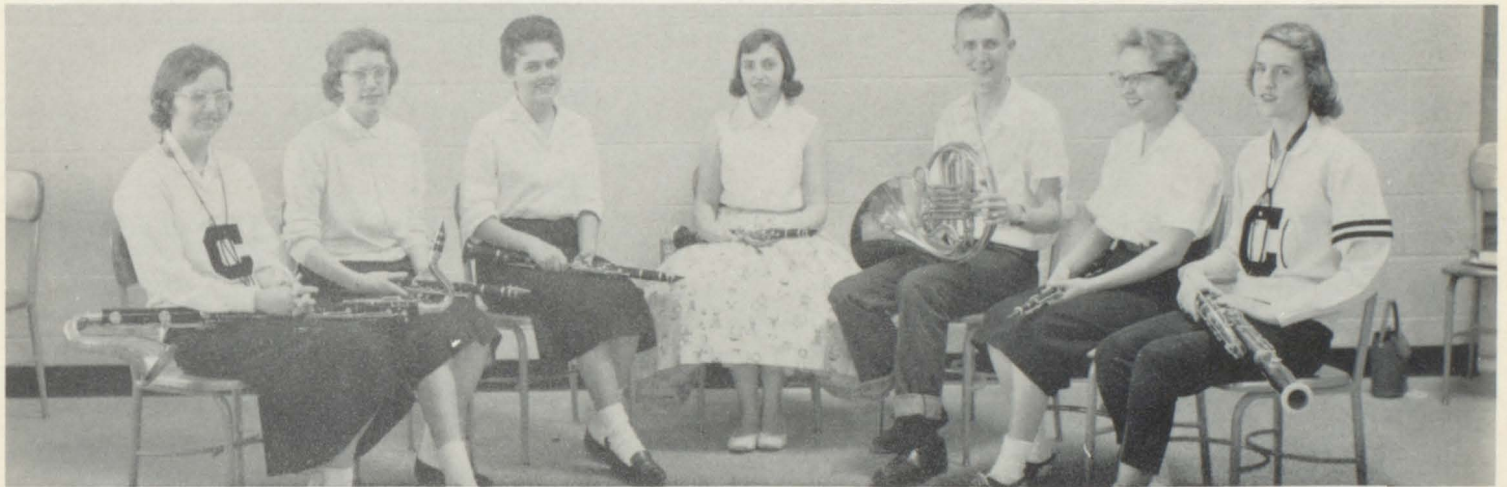
FRONT ROW: Left To Right; Kay McDonald, Barbara Adkisson, Delores Botkin, Etta Sue Drew, Dorothy McGlamery, Gary Long, MarKay Bebermeyer. SECOND ROW: Karen Smith, Delores Burson, Gayle Houston, Ruthanne Haverstick, Eldon Harper, Lyle Triebwasser, Sandra Gibbons, Jerry Travis, Lynn Overton, Larry Burson, Glen Harrison, Bob Jerman, Bill Forrest, John Mow. THIRD ROW: Judy Goe, Carolyn Townsend, Eddie Gladney, Tom Travis, Allen Potts, Roy Yager, Richard Crigler. STANDING: Thelma Williams, Jacquie Curtright, Rosie Angell, Orville Stone, J. R. Yager, Jon Stone, Friend Overton, Sidney Hubbard. NOT PICTURED: Mary Lou Femmer and Judy Martin.

Sponsored By  
AUDRIAN DAIRY  
Mexico, Missouri



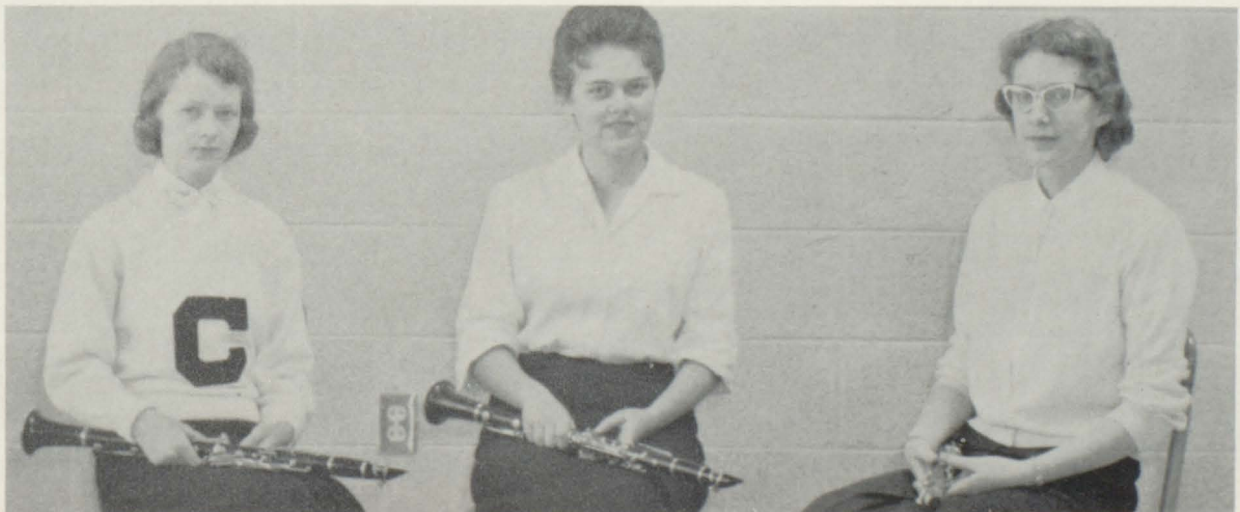
### Brass Sextet

LEFT TO RIGHT: R. P. Yager, Allen Potts, Lynn Overton, J. R. Yager, Tom Travis, John Mow.



### Small Ensemble

LEFT TO RIGHT: Etta Sue Drew, Kay McDonald, Barbara Adkisson, Delores Botkin, Lynn Overton, Dorothy McGlamery, MarKay Bebemeyer.



### Clarinet Trio

LEFT TO RIGHT: Delores Burson, Barbara Adkisson, Kay McDonald.

Sponsored By  
MAYES & CRAIGHEAD AND WESTERN AUTO



### Glee Club

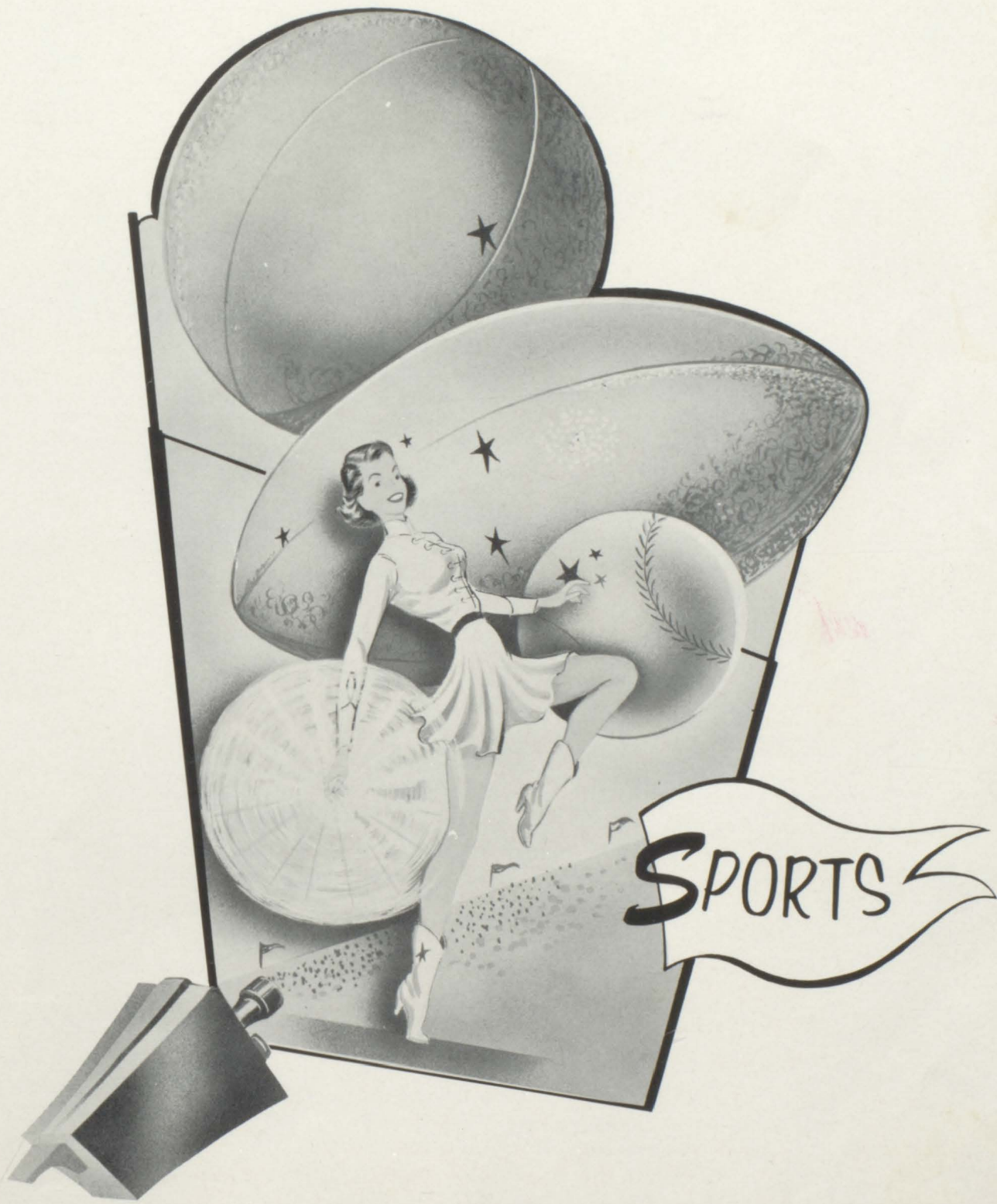
FIRST ROW: Left To Right; Kay Miller, Carolyn Beamer, Shirley Carr, Marilyn Berry, Ann Donnohue, Judi Bevard, Dorothy Atterberry, Mary Lou Jones, Judy Hough, Linda Marshall, Karen Marshall, Norma McBride, Pat Beasley. SECOND ROW: Theima Williams, Martha Mika, Wyvetta Ball, Brenda Blise, Odessa Bonaparte, Virginia Frazier, Ruth Hartgrove, Alice Williams, Lillian Salmons, Judy Wyatt, Carol Smith, Joyce Peck, Barbara Eckley. THIRD ROW: Brenda Cox, Delmyra Durham, Patty Hughes, Beverly Miller, Judy Hillman, MarKay Bebemeyer, Pat Mosby, Sharon Ogle, Areta England, Sharon Jennings, Judy Martin, Kay McDonald, Caryl Abendshien, Janet Fulton. FOURTH ROW: Judy Bowman, Janet Bonney, Mary Groves, Elizabeth Groves, Lorene Alexander, Carol Bonaparte, Virginia Stanford, Ana Given, Doris Bonaparte, Sandra Burson, Nancy Saladin, Linda Davenport, Barbara Kotowicz, Carolyn Carr, Ruthanne Pratt. NOT PICTURED: Helen Dickerson, Anna Woolfolk.



MRS. OLSON  
AND  
GIRLS' ENSEMBLE

Sponsored By  
H. E. STONE, INC. AND HENDERSON PRODUCE







JACQUIE CURTRIGHT



KAY MILLER



SIDNEY HUBBARD



CAROL SMITH



SHERRY WILSON



DOROTHY McGLAMERY

# CHS Cheerleaders

Sponsored By  
COX CLOTHING COMPANY

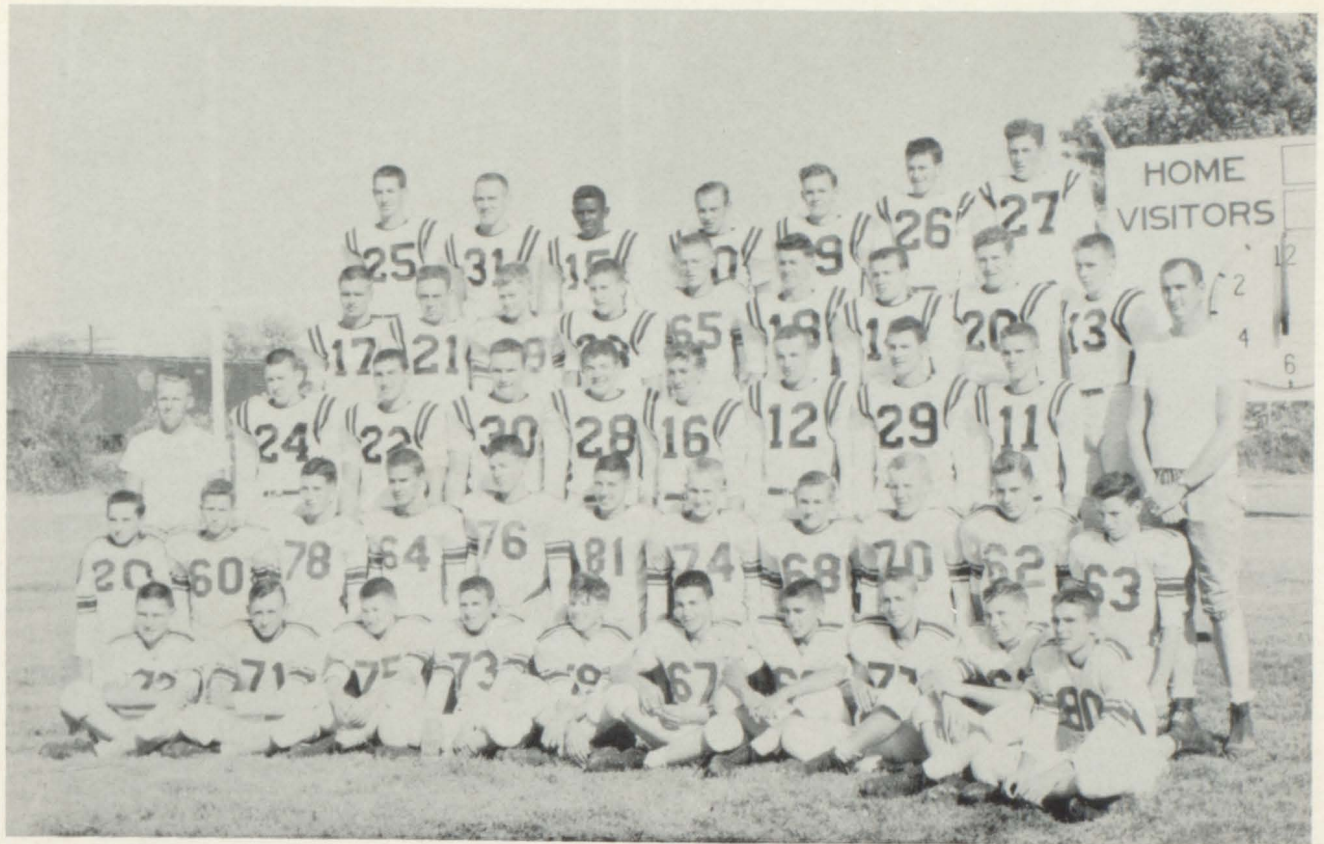
## C Club



## Pep Club



# Football Squad



## Football Squad

FIRST ROW: Left To Right: Lyle Triebwasser, Ken Oliver, Dave Fadler, Tom Beasley, Daryl Ball, Herbert Baker, Glenn Harrison, Wendell Wright, Jerry Travis, George Cox. SECOND ROW: Roy Donaldson, David Drew, Ralph Hutchens, Neal Hartmann, Gary White, Larry Atterberry, Friend Overton, John Cottrill, Miller Owings, Jerry Burson, Alfred Powell. THIRD ROW: Coach Adkins, Ron Crigler, Larry Megown, Jon Stone, Allen Harper, Donnie Decker, Tom Travis, Gary Stowers, John Mow, Coach Kottman. FOURTH ROW: Jerry Mayes, Tom Coureton, Edwin Hibbs, Bill Chase, Bob Miller, Ronald Ball, Bud Johnston, Roy Barnes, R. P. Yager. FIFTH ROW: Ronnie Pemberton, Butch Spry, John Williams, Alvin Pemberton, Allen Zaring, Kennie Cox, Harold Reams.

### STARTING LINE-UP



Sponsored By  
BEN FRANKLIN STORE



### Basketball Squad

KNEELING: Left To Right; Donnie Decker, Bill Bagley, Bill Forrest. STANDING: Roy Barnes, Butch Spry, Jon Stone, Tom Travis, Larry Megown, Coach Kottman. NOT PICTURED: Gary White, John Mow.

### THE COACHES



### Track

**SHOT PUT**  
 John Stone 40'  
 Harold Reams  
 Roy Barnes  
**BROAD JUMP**  
 Larry Megown 20' 6"  
 Ben Dailing  
 John Mow  
**MILE RELAY** 4:49  
 Bud Johnston  
 Roy Barnes  
 Don Decker  
 Ben Dailing  
 440 YD. DASH  
 Jerry Travis  
 Bud Johnston 55.6"  
 Ben Dailing

\*Indicates Lettermen.

Larry Megown\*  
 Roy Barnes\*  
 Lynn Overton\*  
 Bud Johnston\*  
 John Williams\*  
 Allen Zaring\*  
 John Mow\*  
 Jerry Travis\*  
 Glen Harrison

**DISCUS**  
 Gary Stowers 124'  
 John Stone  
 Harold Reams  
**880 RELAY** 1:39  
 Ben Dailing  
 Roy Barnes  
 John Mow  
 Don Decker  
**220 YD. DASH**  
 Mickey Mica  
 Jerry Travis  
 Ben Dailing 24.5  
**HIGH & LOW HURDLES**  
 Bud Johnston 22'5"  
 Bob Miller  
 Larry Megown 17"  
 Johnny Cottrell

Gary Stowers\*  
 Ben Dailing\*  
 Gary White\*  
 Miller Owings  
 Ralph Hutchins  
 Daryl Ball  
 Bill Chase  
 Johnny Cottrell \*

**HIGH JUMP**  
 Gary White 5'6"  
 Larry Megown  
**100 YD. DASH**  
 Ben Dailing 11"  
 Mickey Mica  
 Roy Barnes  
**POLE VAULT**  
 Larry Megown 10'6"  
 John Williams  
**MILE RUN**  
 Tom Travis 4.54  
 Daryl Ball

**880 YD. RUN**  
 Lynn Overton  
 Allen Zaring

Kenneth Cox  
 R. P. Yager  
 Harold Reams  
 Friend Overton  
 Mickey Mica\*  
 John Stone\*  
 Ken Oliver  
 Bob Miller

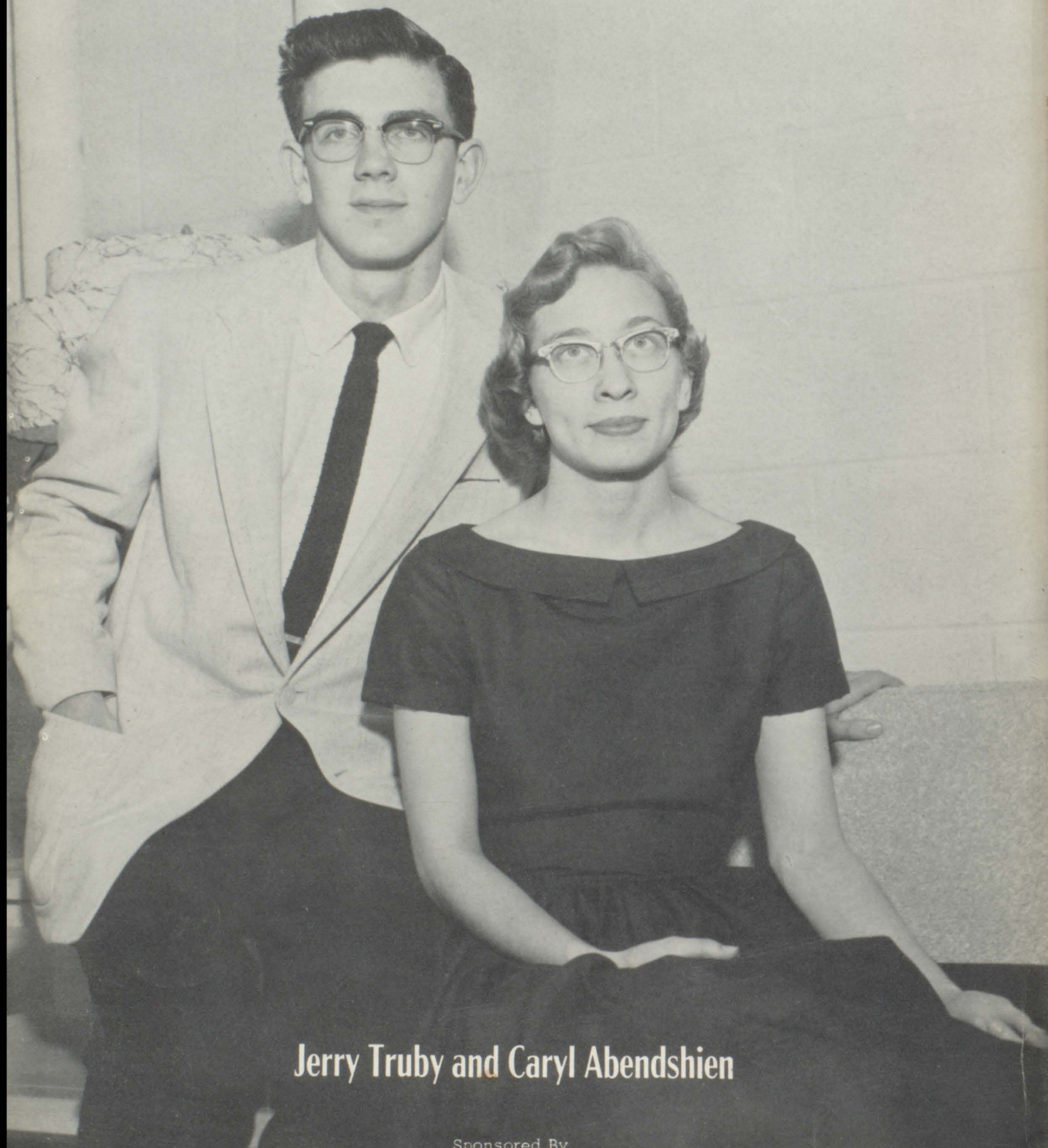
### BEN DAILING





**ACTIVITIES**

## Heliostat King and Queen



**Jerry Truby and Caryl Abendshien**

Sponsored By  
SMITH BEVERAGE CO.

# Homecoming



QUEEN  
SHARON JENNINGS



DOROTHY McGLAMERY  
Senior



SIDNEY HUBBARD  
Senior



JUDY HOUGH  
Sophomore

ATTENDANTS



JOYCE PECK  
Junior

Sponsored By  
LACROSSE LUMBER CO.

# 1957 Centralia Beauty Pageant



MISS SHERRY ANN WILSON  
"Miss Centralia"



ANN DONNOHUE  
"Miss Poise"

JUDY BOWMAN  
"Miss' Hair"

JACQUIE CURTRIGHT  
"Miss Stature"

SHERRY WILSON  
"Miss Centralia"

JUDY HOUGH  
"Miss Personality"

HELEN DICKERSON  
"Miss Smile"

JUDY MARTIN  
"Miss Eyes"

Sponsored By  
P. T. A. AND D. P. HULEN, JEWELRY

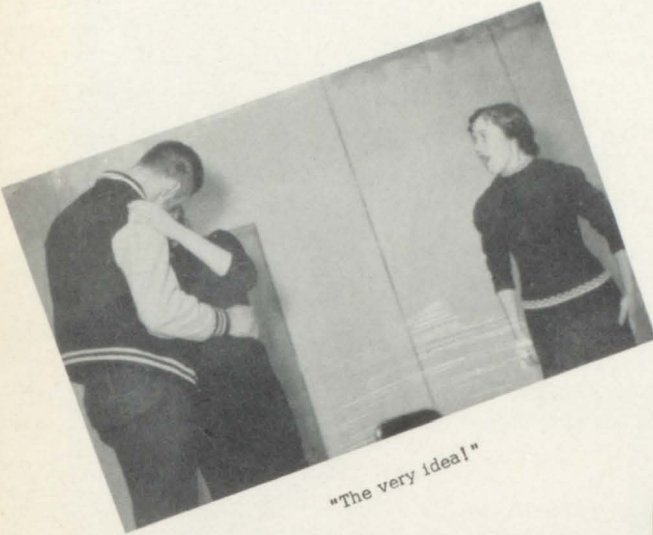


# Senior Play --



# "Junior Miss"

"Who do you think you are?"



"The very ideal!"

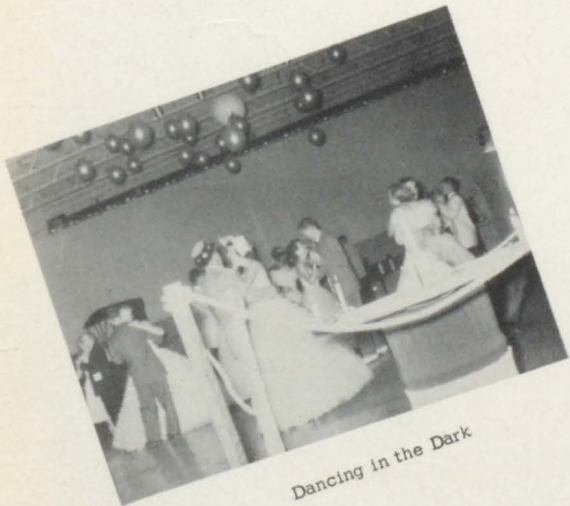


"Excuse me, your highness'es"

Junior and Senior Prom



PROM KING AND QUEEN  
Roy Barnes-Patty Hughes



Dancing in the Dark



Chorus Girls

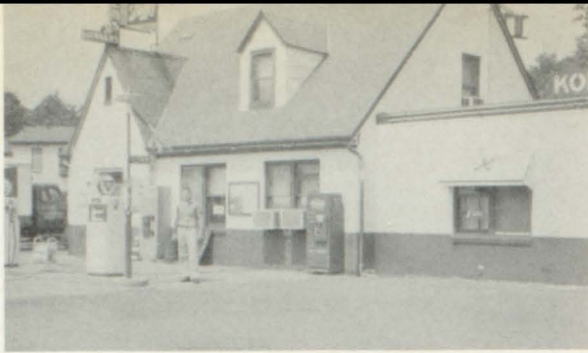
Sponsored By  
TIC TOC GRILL, SMITTY'S SHOE SHOP, BETHEL'S CLOTHING, D-X SERVICE STATION

Golden Nugget Saloon Refreshment Bar



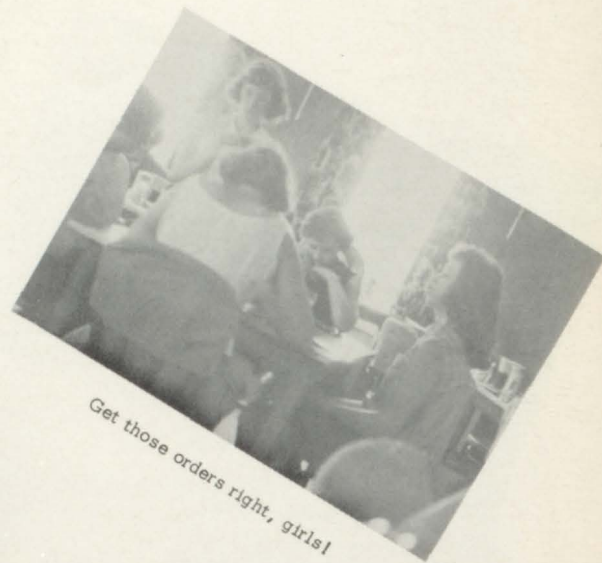
Well-Well-Well



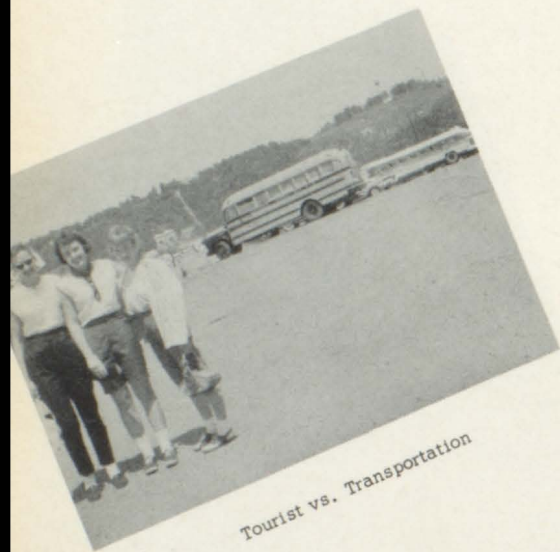


First Stop - - - Food!

# Senior Trip



Get those orders right, girls!

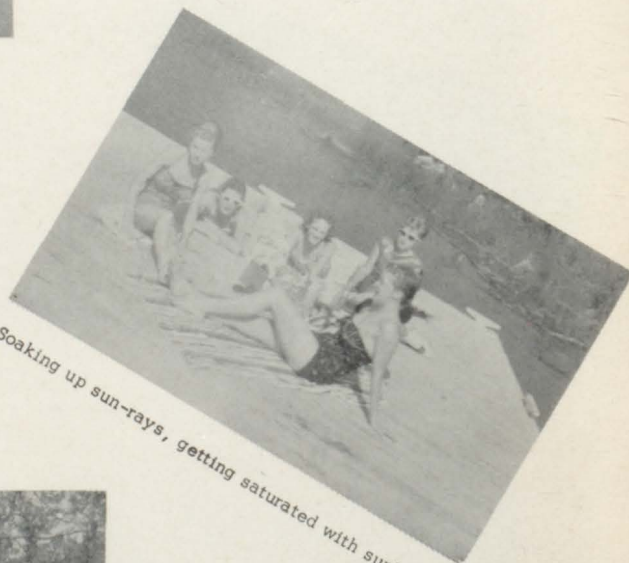


Tourist vs. Transportation

Bagnell Dam



Male population - probably up to no good!



Soaking up sun-rays, getting saturated with sunburn.



Ah! this is the life.

Osage Beach



Shelter anyone?

Sponsored By

WILMA'S BEAUTY SHOP, TOM & DEL'S CAFE, TUNE'S LOCKER



## FHA

OFFICERS: Dorothy McGlamery, Historian; Ann Donnohue, Song Leader; Joyce Peck, Treasurer; Dorothy Atterberry, Secretary; Caryl Abendshien, President; Barbara Adkisson, First Vice-President; Barbara Eckley, Second Vice-President; Sidney Hubbard, Delegate at Large; Mrs. Norma Grove, Sponsor.



## FFA

OFFICERS: Roy Kable, President; Don Bowman, Vice-President; Gene Harlow, Secretary; Miller Owings, Treasurer; Ray Kable, Reporter; Johnny Bowers, Sentinel.

Sponsored By  
BECKMAN CHEVROLET AND BLOSSOM SHOP



**Cooks**



**Custodians**



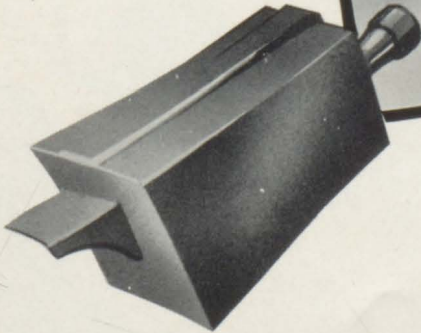
**Bus Fleet**

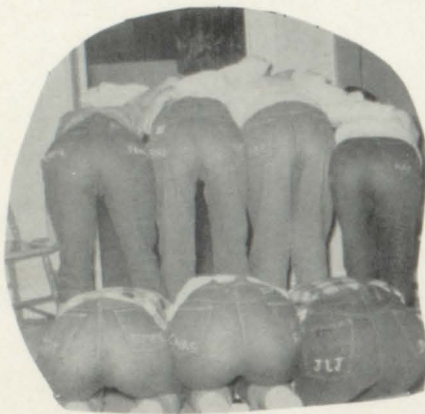


**Bus Drivers**



**HUMOR**







## Class Will

We, the Seniors of 1957, being of sound mind and body, do hereby give and bequeath the following items to the rest of the student body of Centralia High School.

- I, Caryl Abendshien, will my algebra class with Jerry to Marilyn Berry. (Jerry won't be there, but Mr. Olson will!)
- I, Dorothy Atterberry, will my nickname, "Wino", to anyone who will take it.
- I, Ronald Ball, will my offices in FFA to Daryl Ball, if he wants them.
- I, Roy Barnes, will my ability to bluff my way through Mr. Olson's math classes to Bill Bagley.
- I, Shirley Carr, will a bottle of shampoo and a pair of scissors to Ruth Hartgrove, provided that she uses them properly.
- I, Kathleen Carter, will my ability to be late for the class that follows P. E. to anyone who can't get ready before the bell rings.
- I, Tommie Coureton, will my end position on the football team to Kenny Cox.
- I, Richard Crigler, will my ability to draw cartoons in any class and my ability to play my guitar to Jon "Snake" Stone.
- I, Jacquie Curtright, will my place on the cheerleading squad to Sharon Jennings.
- I, Ben Dailing, will my track ability to the oncoming senior boys.
- I, Bob Davidson, will my ability to play ping-pong to all the poor players.
- I, Rosalee Decker, will my ability to keep my locker clean to Donnie Decker.
- I, Barbara Eckley, will my privilege to be on the front row of Glee Club to Judy Hough, who will be there for two more years, if she doesn't grow.
- I, Judy Hillman, will my nickname of "Peanut Butter" To Rosalie Walstead.
- I, Sidney Hubbard, will my love for parties and my place on the cheerleading squad to Joyce Peck.
- I, Patty Hughes, will my love for "bunking parties" to Mary Lou Jones.
- I, Donald Jennings, will my ability to go to school for twelve years without missing a day to Orville Stone.
- I, Betty Mason, will my ability to take dictation to any Junior taking shorthand next year and my ability to diagram sentences to Shirley.
- I, Bula Mathews, will my ability to be quiet on the bus to Bate Dollens.
- I, Bill McCubbin, will my ability to get along without studying to the following senior class.
- I, Dorothy McGlamery, will my enthusiasm to participate in basketball to any underclassman who wants the bruises, scratches, and bumps on the head.
- I, Jerry Mayes, will my seat in Mrs. Renie's speech class to anyone stupid enough to take it next year.
- I, Kay Miller, will my love for two underclassmen to anyone lucky enough to get them.
- I, Pat Mosby, will my chair in Glee Club to Billy Ann Thurston.
- I, Jean O'Brien, will my ability to stay out late to Barbara Adkisson.
- I, Lynn Overton, will my sympathy to any Freshman who must take civics and general science.
- I, Lannie Patton, will my ability to get along with Mrs. Renie to all in her speech class next year.
- I, Ronnie Pemberton, will to Jon Stone the ability to keep up my record of skipping school.
- I, Alfred Powell, will my good grades in Mr. Olson's math classes and my ability to loaf in the classes to Allen Harper.
- I, Ruthanne Pratt, will my Freshman sweetheart, David Fadler, to Judy Bowman. Forgive me, Judy, but that's what he wanted.
- I, Wesley Pulis, will my ability to sleep in class to Clarence McCowan.
- I, Eddie Redington, will my seat in any of Mr. Olson's classes to anyone who is sucker enough to take it.
- I, John Riechers, will my back seat in mechanical drawing to any cold-natured person.
- I, Barbara Schneller, will my ability to play basketball to whomever wants it.
- I, Janice Secrist, will my ability to move around in P. E. just a little bit to Sandra Burson.
- I, Leo Smoot, will all the clangs, bangs, and rattles in my '49 Ford, and my ability to run stop signs and not get caught to Don Bowman.
- I, James "Butch" Spry, will my seat in solid geometry and trigonometry to Larry Megown.
- I, Jerry Truby, will my alarm clock to Orville Stone.
- I, Barbara Trussell, will my freckles to Delores Botkins.
- I, Theresa Walstead, will my ability to go skating on Wednesday and Saturday nights to Ann Hockman, in hopes she can too.
- I, Nadene Weibel, will my ability to hold my temper in P. E. to Pat Beasley, who needs it!
- I, Sherry Wilson, will all the nice things that have happened to me during my four years in high school to Rosie Angell.
- I, Garland Wyatt, will my ability to make fairly good grades in Ag. to any freshman who needs them.
- I, John Zaring, will my ability to get to classes on time to Allen Harper.



Alumni Association  
Centralia, Missouri

Head of the Alumni Association, Alumni, and Students:

Here is our annual report of the whereabouts of the members of the graduating Class of 1957 of Centralia High School, Centralia, Missouri.

We began our search in California. We managed to locate Dr. James W. Spry in Burbank, California. He is the head of the Mercy Hospital there. His head nurse is none other than Caryl Abendshien Truby, whose husband, Jerry, owns the exclusive cleaning establishment, known as JEROME'S SANITIZING SALON.

We had no trouble finding Jacquie Curtright. She is now the famous Jacquie of JACQUIE COSMETICS, INC. Her able assistant is Barbara Trussell. Jacquie says her best customer is the former Miss Sherry Wilson, the wife of a multi-billionaire, who started out as a small-town bank clerk.

We left California and headed for Colorado, for we had heard that Ben Dailing had just been elected the head of the Truck Driver's Union. After we arrived, his capable secretary, Rosalie Decker, showed us around his suite of offices, located in Denver.

Next, we caught the plane to Dallas, Texas. The hostess was Janice Secrist Pemberton, the wife of the person we were going to see. When we got to Dallas, Ronnie informed us that he had just been elected the president of the National Sheep-Rancher's Association.

Our next stop was St. Louis, Missouri. When we arrived at the airport, a chauffeured limousine awaited us, compliments of Billy McCubbin, owner of BILL'S HAIR SALON FOR MEN, (a high-class barbershop). He showed us the sights of the city, then took us to dinner at an exclusive restaurant. Imagine our surprise when we saw that the hat check and cigarette girl was none other than Barbara Schneller. Sitting at the adjoining table was our old buddy, Kay Miller, the newly elected head of the National Parent Teachers Association. They were vividly discussing the baseball situation. It seems that the Cardinals had just beat the socks off of the Dodgers, (20-0), under the capable management of Donald Jennings.

We reluctantly tore ourselves away from St. Louis and headed for our home town, good old Centralia, Missouri. We visited our Alma Mater and looked in on Miss Barbara Eckley's math classes and Miss Jean O'Brien's physical education classes. Miss Eckley's math class had just returned from visiting the General Electric Laboratory, managed by John Zaring and Wesley Pulis.

We made a flying trip to Columbia, Missouri to see the Missouri Tigers play, under the excellent coaching of Tom Couretton, the former All-American. On his present coaching staff are John Riechers and Leo Smoot. Coach Couretton says they are a great help.

On our way to Florida, we dropped in at Nashville, Tennessee to catch the opening performance of Richard Crigler and His Swamp Varmits, composed of Lannie Patton on the bass, Garland Wyatt as vocalist, and Richard himself on the electric guitar. Their newest hit record is, "Mind Your Own Business". Incidentally, Richard has been recognized as the greatest guitar player since Chet Atkins.

When we finally arrived in Florida, we visited the lovely palatial mansion of the former Miss Theresa Walstead. Her husband is the new owner of Cypress Gardens.

Speaking of young-marrieds, have you heard that Nadene Mathews Weibel has just been elected Wife of the Year for the second consecutive year?

On the last leg of our trip, we finally arrived in New York. We caught Roy Barnes on the run, boarding the plane for Melbourne, Australia, as America's only representative in the 1965 Olympics. Uncle Sam figured he was the only man needed. Also at the airport we saw Miss Pat Mosby on her way back to South American to her life's work as a missionary.

Whom should we run into at Saks Fifth Avenue but Dorothy Atterberry. In the course of the conversation we learned that she is the head fashion buyer of that magnificent establishment. She also informed us that Miss Sidney Hubbard is back at her desk as chief fashion illustrator, after a brief visit to Denver, Colorado. Modeling this year's latest fashions was Bula Mathews, the highest-paid and the most-wanted model in the business.

On the way to our hotel, we passed Rockefeller Center which reminded us that Betty Mason is now the private secretary to John D. Rockefeller III.

In the lobby of the Hilton Hotel where we were staying, the Red Cross was sponsoring a benefit for destruction of cancer. Kathleen Carter, head of the Red Cross, was doing a great job of managing the show. Some of the stars were Shirley Carr and Lynn Overton, Metropolitan Opera stars. When they had finished, who should come blasting on the stage but Ronald Ball, the zaniest comedian since Bob Hope. His able sidekick was the famous Vernon Yager. Keep up the good work, kids.

The next evening we attended the theatre to see Dorothy McGlamery, better known as Fifi Gabrielle, starring in the smash hit, "Shut Your Mouth, Go Away", written and directed by Judy Hillman, recently acclaimed as the most brilliant writer of the year. During intermission, whom should we run into but Alfred Powell, just in town from Argentina to attend the annual Petroleum Engineer's Convention.

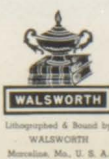
The next morning, bright and early, we hopped down to Washington, D. C. in hopes of seeing the President playing golf. We were in luck for we not only saw the President playing golf, but we also saw his personal accountant and advisor, Jerry Mayes, caddying for him.

Completely relaxed in our compartment on the train, we picked up the morning papers to read that John Sanders had just come in first in the 500 Mile Indianapolis Speedway, uninjured. His statement to the press was that he couldn't have done it without the help of his expert mechanic, Bob Davidson.

Just before we dropped off to sleep, we glanced out the window and saw the largest building imaginable. The huge sign, running the length of the largest building said, EDWARD REDINGTON'S FARM IMPLEMENTS, INC.

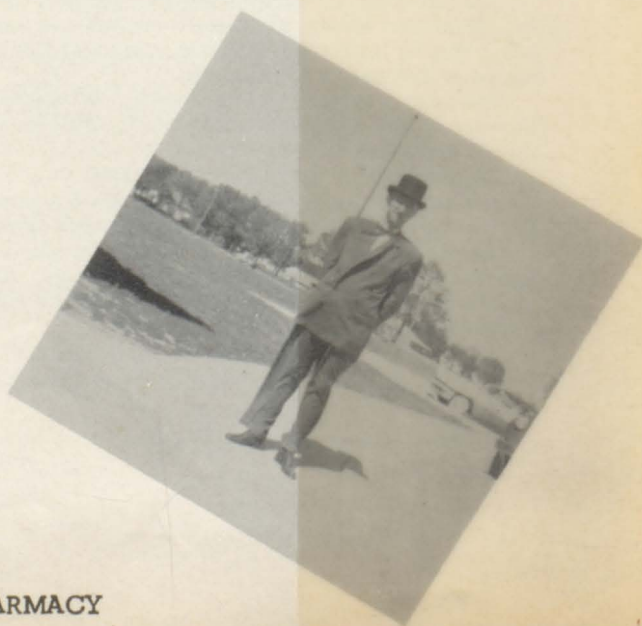
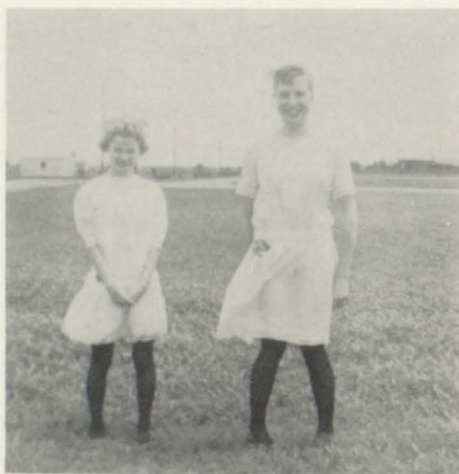
And what are we doing? Running all over the country finding out what everybody else is doing. We hope this meets with everyone's approval.

Yours respectfully,  
Ruthanne Pratt and  
Patty Hughes



Lithographed & Bound by  
WALSORTH  
Marion, Mo., U. S. A.

1857 or 1957??





Sponsored By  
MEADOR FUNERAL HOME

# 1957 Graduating Class



Sponsored By  
J. M. STAMPER AND PRODUCER'S GRAIN COMPANY

